

# LEE COUNTY SURVEY MARK DESCRIPTION



SURVEY CONTROL BY:  
DENI ASSOCIATES, INC.  
FORT MYERS, FLORIDA

MAPPING BY:  
WOOLPERT CONSULTANTS

DESIGNATION 2-21-46-27 <sup>(GPS 9074)</sup> COUNTY LEE STATE FL  
LOCATED IN SEC 21 TWP 46S RGE 27E USGS QUAD MAP CORKSCREW

TO REACH SURVEY MARK FROM THE INTERSECTION OF SIX L'S FARM RD & CORKSCREW RD & GO EAST ON CORKSCREW RD 2.0mi± TO CARTER RD (ROAD TO SOUTH); THENCE CONTINUE EAST ON CORKSCREW RD 1.0mi± TO MARK NEAR SOUTHEAST CORNER SECTION 21

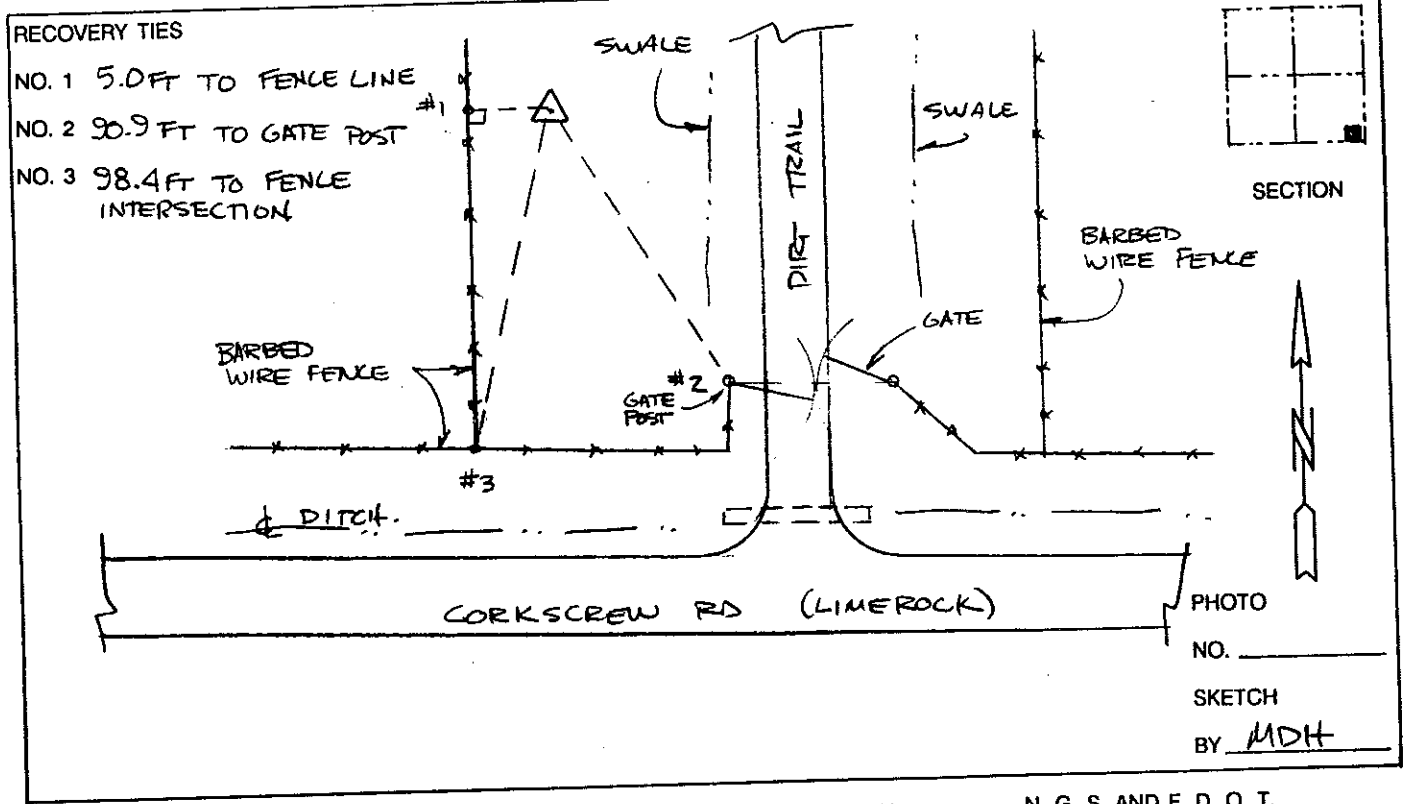
TYPE OF 3" DIAMETER ALUMINUM DISK IN CONCRETE 0.1 FT BELOW GROUND;  
MARK "LEE COUNTY DENI ASSOCIATES 1990" DATE SET 1990

HORIZONTAL CONTROL ORIGINATED ON 1st ORDER  
CONTROL BASED ON FLORIDA HIGH PRECISION GPS NETWORK,  
ON NORTH AMERICAN DATUM OF 1983, 1990 ADJUSTMENT  
COORDINATES (FT), 1st ORDER  
NORTHING (Y) 769,855.321  
EASTING (X) 783,190.988

HORIZONTAL CONTROL ORIGINATED ON \_\_\_\_\_ ORDER  
CONTROL BY \_\_\_\_\_  
ON \_\_\_\_\_ DATUM  
COORDINATES (FT), \_\_\_\_\_ ORDER  
NORTHING (Y) \_\_\_\_\_  
EASTING (X) \_\_\_\_\_

GRID FLORIDA TRANSVERSE MERCATOR  
ZONE WEST SCALE FACTOR .999960  
FIELD BOOK \_\_\_\_\_ PAGE \_\_\_\_\_

RECOVERED BY \_\_\_\_\_  
DATE, CONDITION \_\_\_\_\_



VERTICAL CONTROL ORIGINATED ON 2nd ORDER CONTROL ESTABLISHED BY \_\_\_\_\_ N. G. S. AND F. D. O. T.  
ON NATIONAL GEODETIC VERTICAL DATUM OF 1929.  
LEVEL BOOK \_\_\_\_\_ PAGE \_\_\_\_\_