

LEE COUNTY SURVEY MARK DESCRIPTION



SURVEY CONTROL BY:
DENI ASSOCIATES, INC.
FORT MYERS, FLORIDA

MAPPING BY:
WOOLPERT CONSULTANTS

DESIGNATION 2-28-45-27 ^(GPS) (9072) COUNTY LEE STATE FL
 LOCATED IN SEC 28 TWP 45S RGE 7E USGS QUAD MAP ALVA SE.
 TO REACH SURVEY MARK FROM THE INTERSECTION OF BELL BLVD &
IMMOKALEE RD (SR 82) ; GO NORTHWESTERLY
0.45 mi ± ON SR 82

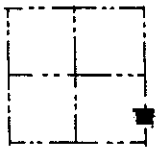
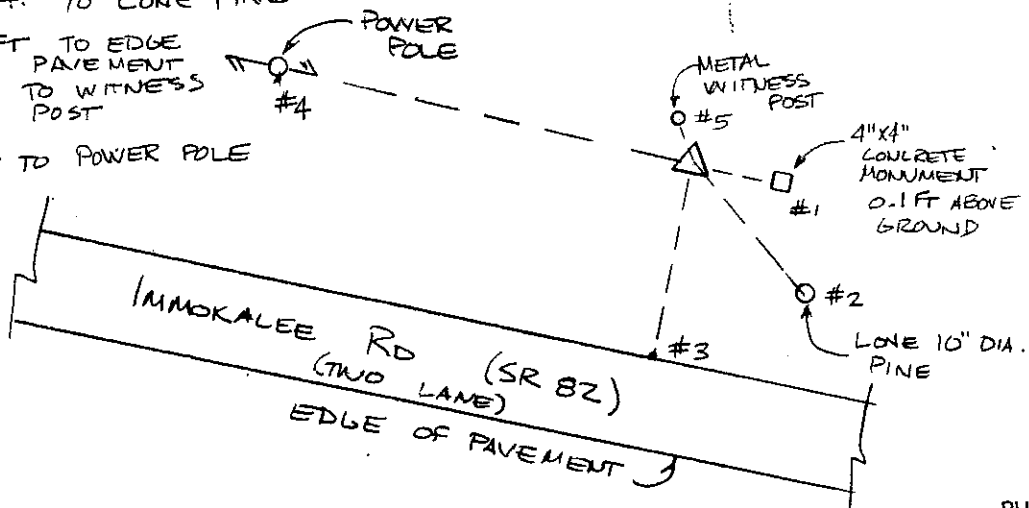
TYPE OF 3" ALUMINUM DISK IN CONCRETE ; "LEE COUNTY DENI ASSOCIATES
 MARK 1990" DATE SET 1990

HORIZONTAL CONTROL ORIGINATED ON 1st ORDER HORIZONTAL CONTROL ORIGINATED ON _____ ORDER
 CONTROL BASED ON FLORIDA HIGH PRECISION GPS NETWORK, CONTROL BY _____
 ON NORTH AMERICAN DATUM OF 1983, 1990 ADJUSTMENT ON _____ DATUM
 COORDINATES (FT), 1st ORDER COORDINATES (FT), _____ ORDER
 NORTHING (Y) 798,937.852 NORTHING (Y) _____
 EASTING (X) 782,836.498 EASTING (X) _____

GRID FLORIDA TRANSVERSE MERCATOR RECOVERED BY _____
 ZONE WEST SCALE FACTOR .999960 DATE, CONDITION _____
 FIELD BOOK _____ PAGE _____

RECOVERY TIES

- NO. 1 21.5 FT TO CONCRETE MONUMENT
- NO. 2 67.5 FT TO LONE PINE
- NO. 3 89.4 FT TO EDGE PAVEMENT
- NO. 4 1.9 FT TO WITNESS POST
- NO. 5 93 FT TO POWER POLE



SECTION

↑
N
↑

PHOTO NO. _____
 SKETCH BY MDH

VERTICAL CONTROL ORIGINATED ON 2nd ORDER CONTROL ESTABLISHED BY _____ N. G. S. AND F. D. O. T.
 ON NATIONAL GEODETIC VERTICAL DATUM OF 1929.
 ELEVATION (FT) _____, 3rd ORDER LEVEL BOOK _____ PAGE _____