

# LEE COUNTY SURVEY MARK DESCRIPTION



SURVEY CONTROL BY:  
DENI ASSOCIATES, INC.  
FORT MYERS, FLORIDA

MAPPING BY:  
WOOLPERT CONSULTANTS

DESIGNATION GPS USL&GS CORKSCREW (9069)<sup>GPS</sup> COUNTY COLLIER STATE FL  
 LOCATED IN SEC 18 TWP 46S RGE 28E USGS QUAD MAP CORKSCREW  
 TO REACH SURVEY MARK FROM THE INTERSECTION OF IMMOKALEE RD (SR 82)  
& CORKSCREW RD (SR 850); GO SOUTHERLY ON  
CORKSCREW RD (SR 850) 3.4 mi ± TO INTERSECTION OF  
WHIDDEN'S LOOP RD & CORKSCREW RD.  
 TYPE OF 4" DIA. BRASS DISK SET IN 10"X10" CONCRETE PAD  
 MARK "VSC # 65 1955" DATE SET 1990

HORIZONTAL CONTROL ORIGINATED ON 1st ORDER HORIZONTAL CONTROL ORIGINATED ON \_\_\_\_\_ ORDER  
 CONTROL BASED ON FLORIDA HIGH PRECISION GPS NETWORK, CONTROL BY \_\_\_\_\_  
 ON NORTH AMERICAN DATUM OF 1983, 1990 ADJUSTMENT ON \_\_\_\_\_ DATUM  
 COORDINATES (FT), 1st ORDER COORDINATES (FT), \_\_\_\_\_ ORDER

NORTHING (Y) 778,011,360  
 EASTING (X) 800,558,627

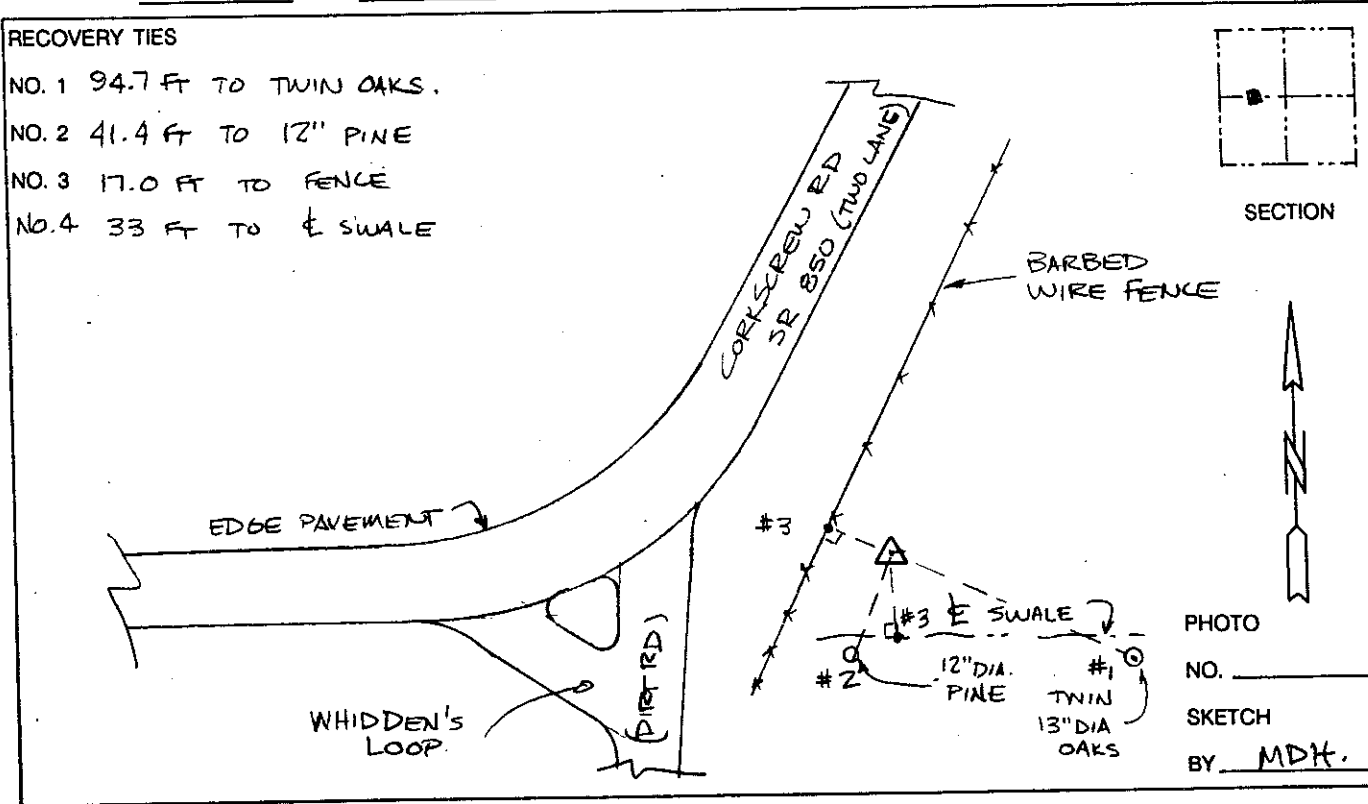
NORTHING (Y) \_\_\_\_\_  
 EASTING (X) \_\_\_\_\_

GRID FLORIDA TRANSVERSE MERCATOR  
 ZONE WEST SCALE FACTOR .999965  
 FIELD BOOK \_\_\_\_\_ PAGE \_\_\_\_\_

RECOVERED BY DENI ASSOCIATES  
 DATE, CONDITION 2-91  
GOOD

**RECOVERY TIES**

- NO. 1 94.7 FT TO TWIN OAKS.
- NO. 2 41.4 FT TO 12" PINE
- NO. 3 17.0 FT TO FENCE
- NO. 4 33 FT TO SWALE



VERTICAL CONTROL ORIGINATED ON 2nd ORDER CONTROL ESTABLISHED BY N. G. S. AND F. D. O. T.

ON NATIONAL GEODETIC VERTICAL DATUM OF 1929.

ELEVATION (FT) \_\_\_\_\_ 3rd ORDER

LEVEL BOOK \_\_\_\_\_ PAGE \_\_\_\_\_