

LEE COUNTY SURVEY MARK DESCRIPTION



SURVEY CONTROL BY:
DENI ASSOCIATES, INC.
FORT MYERS, FLORIDA

MAPPING BY:
WOOLPERT CONSULTANTS

DESIGNATION 1-36-46-26 ^{GPS} (9066) COUNTY LEE STATE FL
 LOCATED IN SEC 36 TWP 46S RGE 26E USGS QUAD MAP CORKSCREW NW
 TO REACH SURVEY MARK FROM THE INTERSECTION OF SIX L'S FARM RD &
CORKSCREW RD ; GO SOUTH ON SIX L'S FARM RD
1.0 MI ± TO INTERSECTION WITH ROAD TO WEST.

TYPE OF 3" DIAMETER ALUMINUM DISK IN CONCRETE " LEE COUNTY
 MARK DENI ASSOCIATES 1990" ; 0.2 FT BELOW GROUND DATE SET 1990

HORIZONTAL CONTROL ORIGINATED ON 1st ORDER HORIZONTAL CONTROL ORIGINATED ON _____ ORDER
 CONTROL BASED ON FLORIDA HIGH PRECISION GPS NETWORK, CONTROL BY _____
 ON NORTH AMERICAN DATUM OF 1983, 1990 ADJUSTMENT ON _____ DATUM
 COORDINATES (FT), 1st ORDER COORDINATES (FT), _____ ORDER

NORTHING (Y) 764,106.560
 EASTING (X) 767,396.838

NORTHING (Y) _____
 EASTING (X) _____

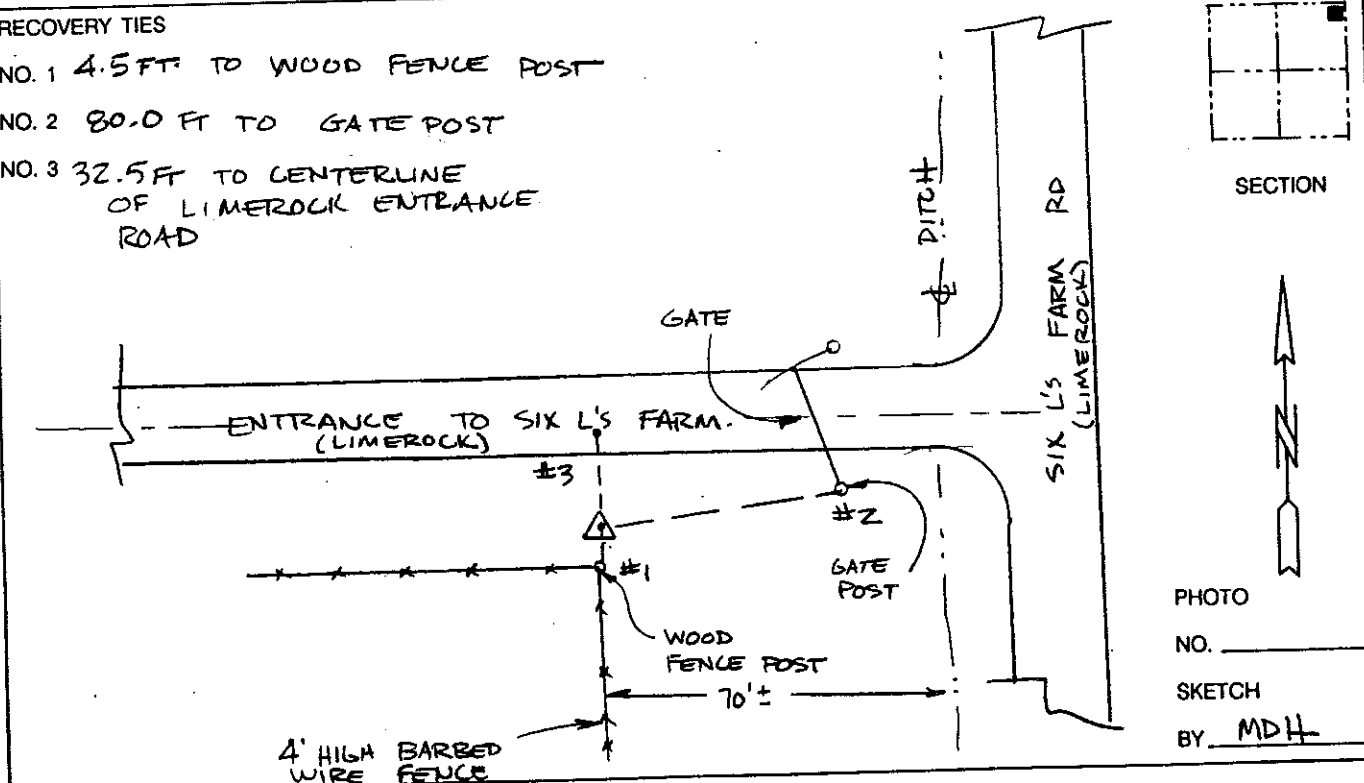
GRID FLORIDA TRANSVERSE MERCATOR
 ZONE WEST SCALE FACTOR .999955

RECOVERED BY _____
 DATE, CONDITION _____

FIELD BOOK _____ PAGE _____

RECOVERY TIES

- NO. 1 4.5 FT TO WOOD FENCE POST
- NO. 2 80.0 FT TO GATE POST
- NO. 3 32.5 FT TO CENTERLINE OF LIMEROCK ENTRANCE ROAD



SECTION
 PHOTO NO. _____
 SKETCH BY MDH

VERTICAL CONTROL ORIGINATED ON 2nd ORDER CONTROL ESTABLISHED BY N. G. S. AND F. D. O. T.

ON NATIONAL GEODETIC VERTICAL DATUM OF 1929.

ELEVATION (FT) _____ 3rd ORDER

LEVEL BOOK _____ PAGE _____