

LEE COUNTY SURVEY MARK DESCRIPTION



SURVEY CONTROL BY:
DENI ASSOCIATES, INC.
FORT MYERS, FLORIDA

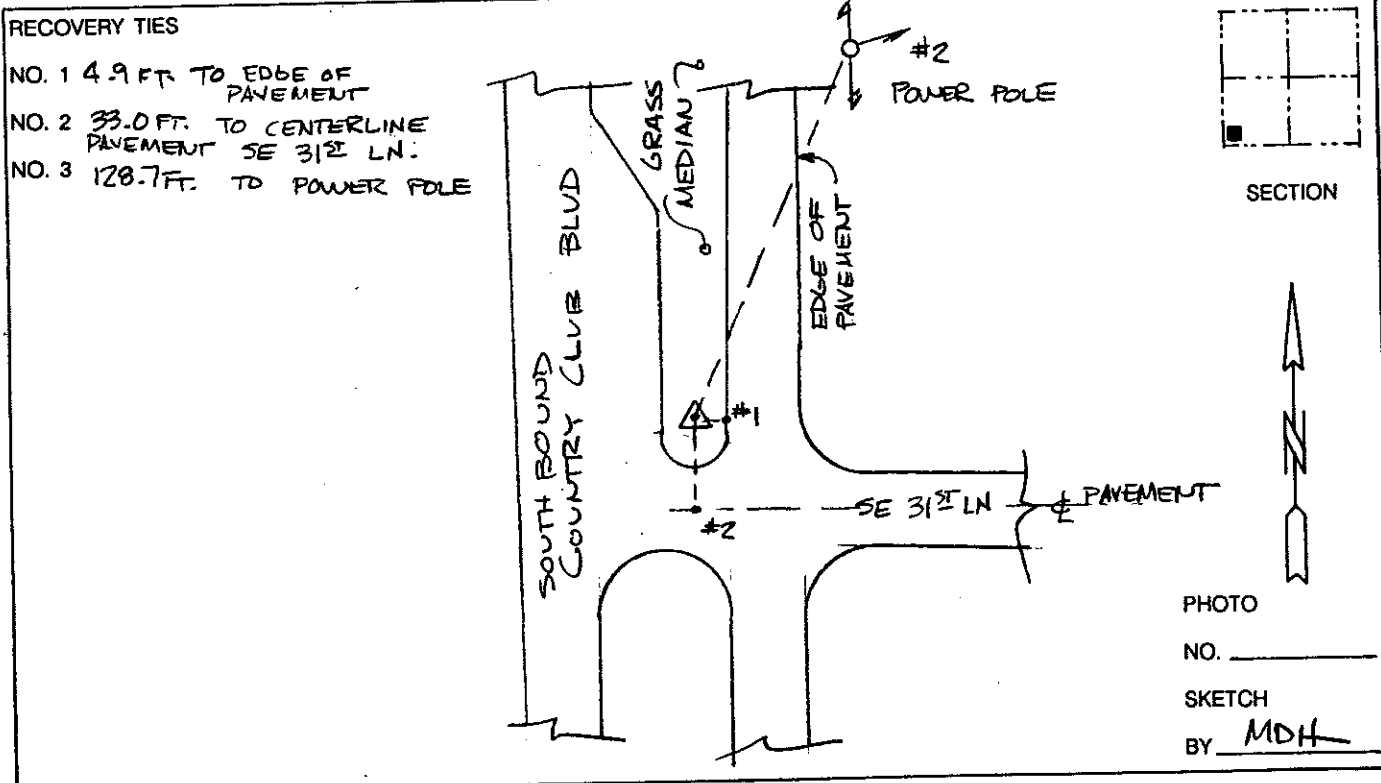
MAPPING BY:
WOOLPERT CONSULTANTS

DESIGNATION 3-31-44-24 ^(GPS) (9063) COUNTY LEE STATE FL
 LOCATED IN SEC 31 TWP 44S RGE 24E USGS QUAD MAP FORT MYERS SW
 TO REACH SURVEY MARK FROM _____
AT THE INTERSECTION AS SHOWN IN CAPE CORAL.

TYPE OF 3" DIA. ALUM. LEE COUNTY DISK SET IN CONCRETE
 MARK 0.4' BELOW GROUND. DATE SET 1990

HORIZONTAL CONTROL ORIGINATED ON 1st ORDER HORIZONTAL CONTROL ORIGINATED ON _____ ORDER
 CONTROL BASED ON FLORIDA HIGH PRECISION GPS NETWORK, CONTROL BY _____
 ON NORTH AMERICAN DATUM OF 1983, 1990 ADJUSTMENT ON _____ DATUM
 COORDINATES (FT), 1st ORDER COORDINATES (FT), _____ ORDER
 NORTHING (Y) 821,422.281 NORTHING (Y) _____
 EASTING (X) 670,400.331 EASTING (X) _____

GRID FLORIDA TRANSVERSE MERCATOR RECOVERED BY _____
 ZONE WEST SCALE FACTOR 999941 DATE, CONDITION _____
 FIELD BOOK _____ PAGE _____



VERTICAL CONTROL ORIGINATED ON 2nd ORDER CONTROL ESTABLISHED BY _____ N. G. S. AND F. D. O. T.
 ON NATIONAL GEODETIC VERTICAL DATUM OF 1929.
 ELEVATION (FT) _____ 3rd ORDER LEVEL BOOK _____ PAGE _____