

LEE COUNTY SURVEY MARK DESCRIPTION



SURVEY CONTROL BY:
DENI ASSOCIATES, INC.
FORT MYERS, FLORIDA

MAPPING BY:
WOOLPERT CONSULTANTS

DESIGNATION (JEI) 01 45 23 17 ^(GPS 9062) COUNTY LEE STATE FL
 LOCATED IN SEC 17 TWP 45S RGE 23E USGS QUAD MAP PINE ISLAND CENTER
 TO REACH SURVEY MARK FROM CAPE CORAL PKWY AND CHIQUITA BLVD; GO SOUTH 1.0 MILES
ON CHIQUITA BLVD TO EL DORADO PKWY; THENCE WESTERLY ALONG EL DORADO PKWY FOR
1.6 MILES TO THE END OF THE ROAD AND MARK.

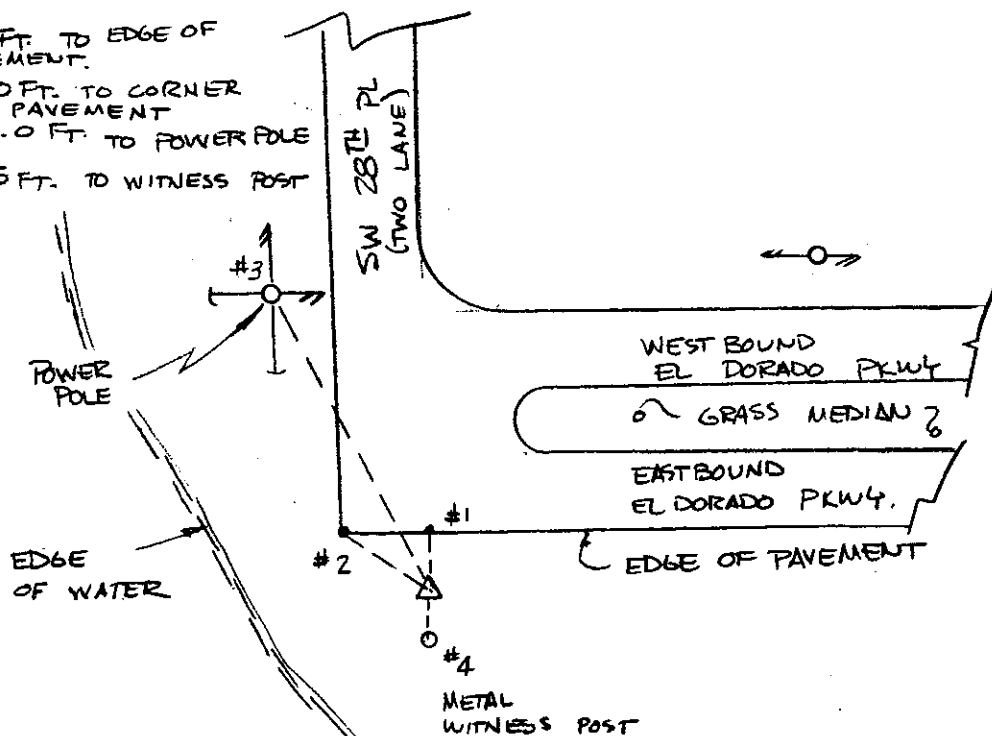
TYPE OF 4x4" CONCRETE MONUMENT WITH BRASS DISK
 MARK SET BY J.E.I. DATE SET 1990

HORIZONTAL CONTROL ORIGINATED ON 1st ORDER HORIZONTAL CONTROL ORIGINATED ON _____ ORDER
 CONTROL BASED ON FLORIDA HIGH PRECISION GPS NETWORK, CONTROL BY _____
 ON NORTH AMERICAN DATUM OF 1983, 1990 ADJUSTMENT ON _____ DATUM
 COORDINATES (FT), 1st ORDER COORDINATES (FT), _____ ORDER
 NORTHING (Y) 805,260.019 NORTHING (Y) _____
 EASTING (X) 645,303.042 EASTING (X) _____

GRID FLORIDA TRANSVERSE MERCATOR RECOVERED BY _____
 ZONE WEST SCALE FACTOR .999941 DATE, CONDITION _____
 FIELD BOOK _____ PAGE _____

RECOVERY TIES

- NO. 1 21.8 FT. TO EDGE OF PAVEMENT.
- NO. 2 30.0 FT. TO CORNER OF PAVEMENT
- NO. 3 110.0 FT. TO POWER POLE
- NO. 4 10.5 FT. TO WITNESS POST



VERTICAL CONTROL ORIGINATED ON 2nd ORDER CONTROL ESTABLISHED BY N. G. S. AND F. D. O. T.
 ON NATIONAL GEODETIC VERTICAL DATUM OF 1929.
 ELEVATION (FT) _____ 3rd ORDER LEVEL BOOK _____ PAGE _____