

# LEE COUNTY SURVEY MARK DESCRIPTION



SURVEY CONTROL BY:  
DENI ASSOCIATES, INC.  
FORT MYERS, FLORIDA

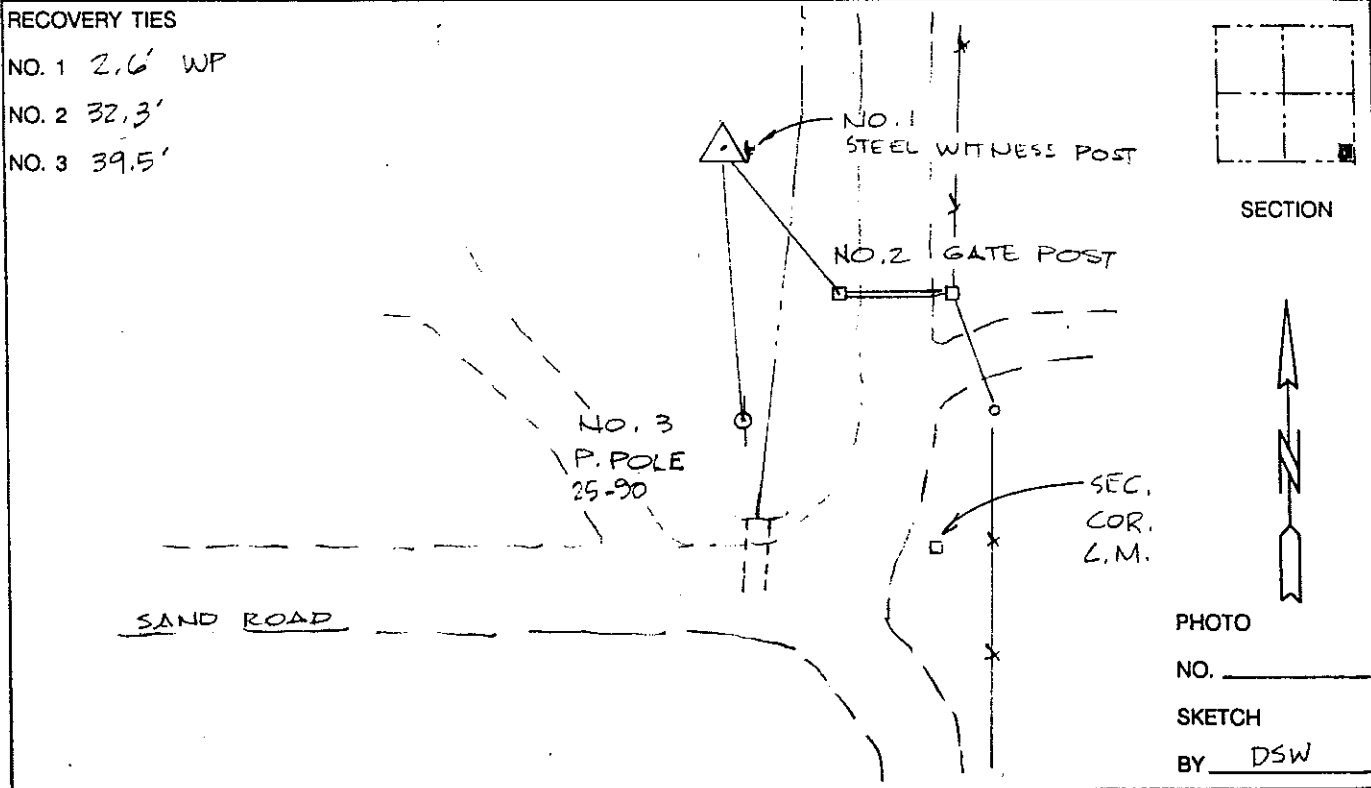
MAPPING BY:  
WOOLPERT CONSULTANTS

DESIGNATION 2-24-47-26 <sup>GPS</sup> (9053) COUNTY LEE STATE FL  
 LOCATED IN SEC 24 TWP 47S RGE 26E USGS QUAD MAP CORKSCREW SW  
 TO REACH SURVEY MARK FROM I75 & BOLITA BEACH RD / CARREL RD : GO  
E. 4.65 MI ; THENCE N. 2.0 MI ; THENCE E. 1.0 MI.  
TO MARK.

TYPE OF 3" DIAMETER ALUMINUM DISK IN CONCRETE 0.1 FT. BELOW GROUND;  
 MARK "LEE COUNTY DENI ASSOCIATES 1990" DATE SET 1991

HORIZONTAL CONTROL ORIGINATED ON 1st ORDER HORIZONTAL CONTROL ORIGINATED ON \_\_\_\_\_ ORDER  
 CONTROL BASED ON FLORIDA HIGH PRECISION GPS NETWORK, CONTROL BY \_\_\_\_\_  
 ON NORTH AMERICAN DATUM OF 1983, 1990 ADJUSTMENT ON \_\_\_\_\_ DATUM  
 COORDINATES (FT), 1st ORDER COORDINATES (FT), \_\_\_\_\_ ORDER  
 NORTHING (Y) 737,498,663 NORTHING (Y) \_\_\_\_\_  
 EASTING (X) 767,915,577 EASTING (X) \_\_\_\_\_

GRID FLORIDA TRANSVERSE MERCATOR RECOVERED BY \_\_\_\_\_  
 ZONE WEST SCALE FACTOR .999955 DATE, CONDITION \_\_\_\_\_  
 FIELD BOOK \_\_\_\_\_ PAGE \_\_\_\_\_



VERTICAL CONTROL ORIGINATED ON 2nd ORDER CONTROL ESTABLISHED BY N. G. S. AND F. D. O. T.  
 ON NATIONAL GEODETIC VERTICAL DATUM OF 1929.  
 ELEVATION (FT) \_\_\_\_\_, 3rd ORDER LEVEL BOOK \_\_\_\_\_ PAGE \_\_\_\_\_