

# LEE COUNTY SURVEY MARK DESCRIPTION

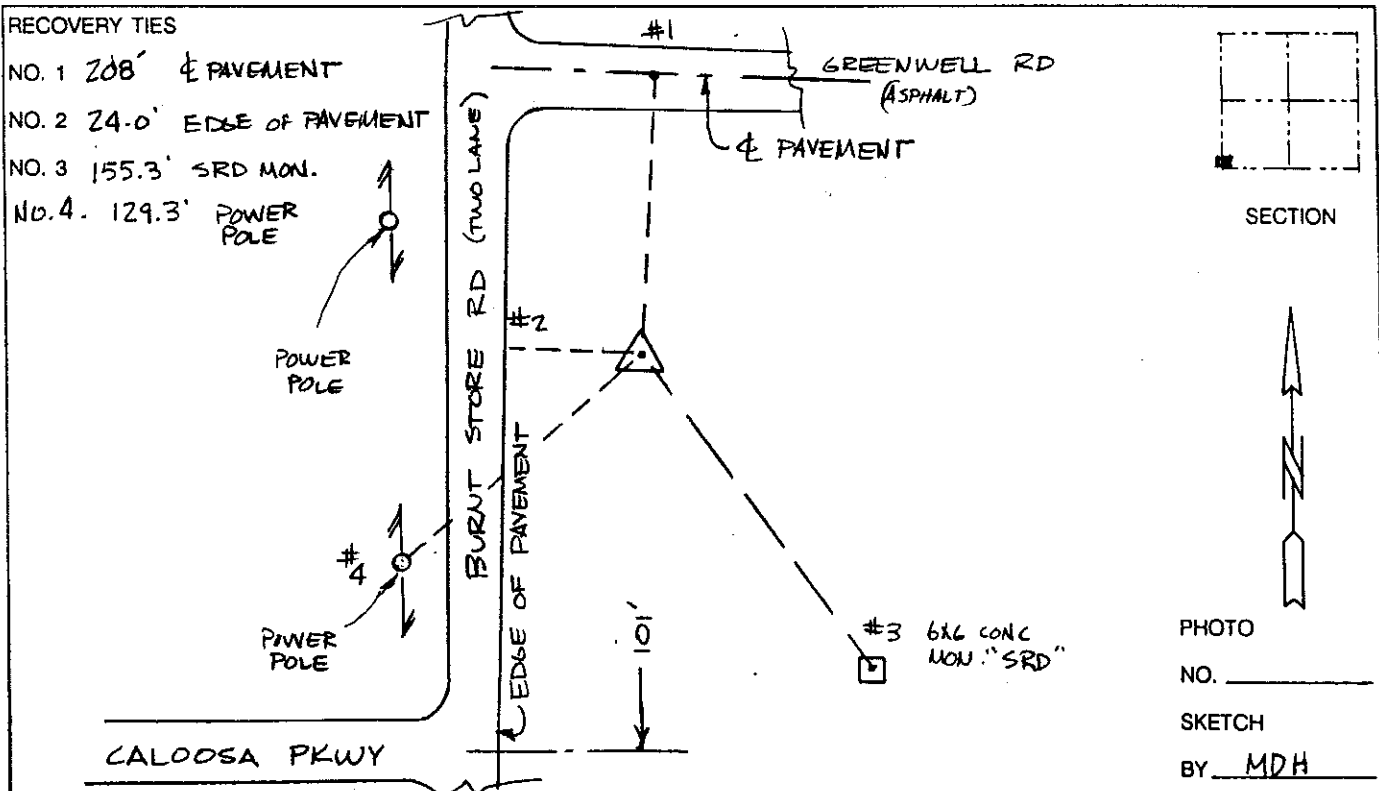


SURVEY CONTROL BY:  
DENI ASSOCIATES, INC.  
FORT MYERS, FLORIDA

MAPPING BY:  
WOOLPERT CONSULTANTS

DESIGNATION F.D.O.T. 12 88 A36 (9034)<sup>GPS</sup> COUNTY LEE STATE FL  
 LOCATED IN SEC 17 TWP 43S. RGE 23E. USGS QUAD MAP MATLACHA  
 TO REACH SURVEY MARK FROM THE INTERSECTION OF PINE ISLAND RD &  
BURNT STORE RD GO NORTH 6.0 MI± ALONG BURNT STORE  
RD.

TYPE OF 4X4 CONC. MON. FL DOT SURVEY MARKER  
 MARK W/ 4" BRASS DISK - FLUSH, EXISTING DATE SET MARCH 1991<sup>GPS</sup>  
 HORIZONTAL CONTROL ORIGINATED ON 1st ORDER HORIZONTAL CONTROL ORIGINATED ON \_\_\_\_\_ ORDER  
 CONTROL BASED ON FLORIDA HIGH PRECISION GPS NETWORK, CONTROL BY \_\_\_\_\_  
 ON NORTH AMERICAN DATUM OF 1983, 1990 ADJUSTMENT ON \_\_\_\_\_ DATUM  
 COORDINATES (FT), 1st ORDER COORDINATES (FT), \_\_\_\_\_ ORDER  
 NORTHING (Y) 869,825.846 NORTHING (Y) \_\_\_\_\_  
 EASTING (X) 643,413.343 EASTING (X) \_\_\_\_\_  
 GRID FLORIDA TRANSVERSE MERCATOR MARK RECOVERED BY DENI ASSOCIATES  
 ZONE WEST SCALE FACTOR .999941 DATE, CONDITION 2-91  
 FIELD BOOK \_\_\_\_\_ PAGE \_\_\_\_\_ GOOD



VERTICAL CONTROL ORIGINATED ON 2nd ORDER CONTROL ESTABLISHED BY N. G. S. AND F. D. O. T.  
 ON NATIONAL GEODETIC VERTICAL DATUM OF 1929.  
 ELEVATION (FT) \_\_\_\_\_, 3rd ORDER LEVEL BOOK \_\_\_\_\_ PAGE \_\_\_\_\_