

LEE COUNTY SURVEY MARK DESCRIPTION



SURVEY CONTROL BY:
DENI ASSOCIATES, INC.
FORT MYERS, FLORIDA

MAPPING BY:
WOOLPERT CONSULTANTS

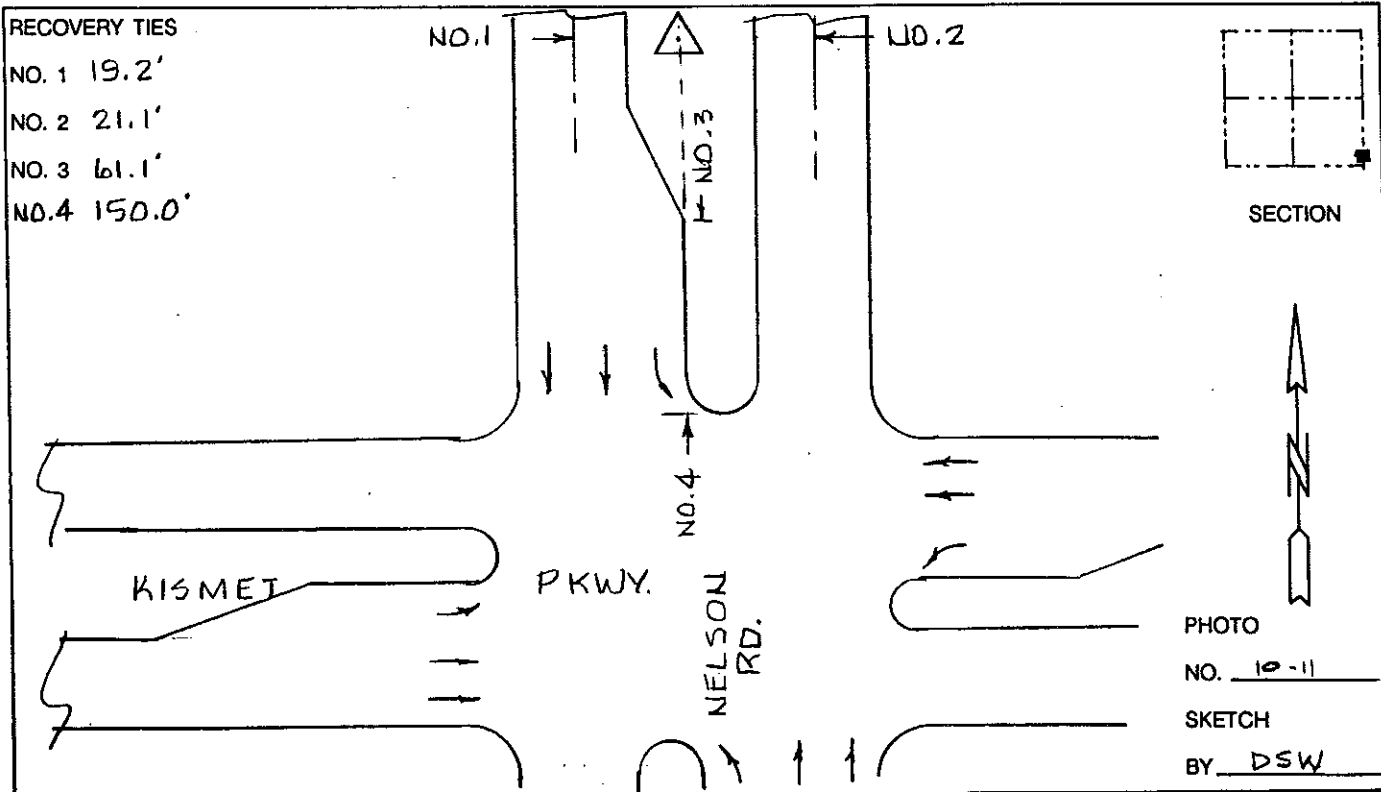
DESIGNATION GPS HOLT (9033) COUNTY LEE STATE FL
 LOCATED IN SEC 27 TWP 43 S RGE 23 E USGS QUAD MAP FT. MYERS N.W.
 TO REACH SURVEY MARK FROM PINE ISLAND RD. & NELSON RD. IN CAPE CORAL:
GO N. ON NELSON RD. 3.5 MI. TO KISMET PKWY.

TYPE OF 3" ALUM. LEE CO. DISK IN CONG., 1" BLW. GRD.
 MARK STAMPED "GPS HOLT" DATE SET MARCH 1990

HORIZONTAL CONTROL ORIGINATED ON 1st ORDER HORIZONTAL CONTROL ORIGINATED ON _____ ORDER
 CONTROL BASED ON FLORIDA HIGH PRECISION GPS NETWORK, CONTROL BY _____
 ON NORTH AMERICAN DATUM OF 1983, 1990 ADJUSTMENT ON _____ DATUM
 COORDINATES (FT), 1st ORDER COORDINATES (FT), _____ ORDER
 NORTHING (Y) 859,190.754 NORTHING (Y) _____
 EASTING (X) 659,368.497 EASTING (X) _____

GRID FLORIDA TRANSVERSE MERCATOR RECOVERED BY _____
 ZONE WEST SCALE FACTOR .999941 DATE, CONDITION _____

FIELD BOOK _____ PAGE _____



VERTICAL CONTROL ORIGINATED ON 2nd ORDER CONTROL ESTABLISHED BY N. G. S. AND F. D. O. T.

ON NATIONAL GEODETIC VERTICAL DATUM OF 1929.

ELEVATION (FT) 14.19 , 3rd ORDER LEVEL BOOK V22 PAGE 9