

LEE COUNTY SURVEY MARK DESCRIPTION



SURVEY CONTROL BY:
DENI ASSOCIATES, INC.
FORT MYERS, FLORIDA

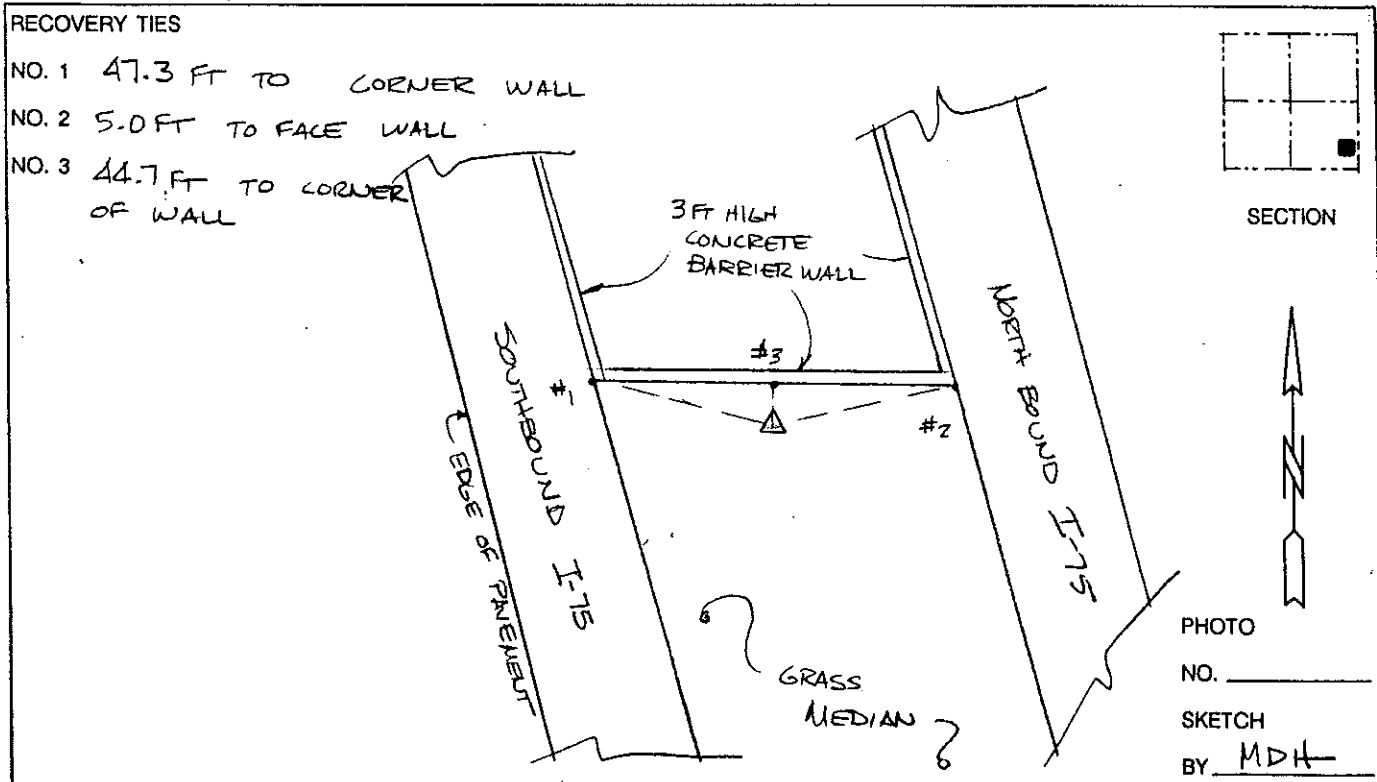
MAPPING BY:
WOOLPERT CONSULTANTS

DESIGNATION F.D.O.T. I-75- B1 A53 ^{GPS} (9019) COUNTY LEE STATE FL
 LOCATED IN SEC 21 TWP 44S RGE 25E USGS QUAD MAP FORT MYERS
 TO REACH SURVEY MARK FROM THE INTERSECTION OF BAYSHORE RD (CR 78)
& I-75 @ THE SOUTH END OF BRIDGE ATOP OVERPASS

TYPE OF 3" DIAMETER BRASS DISK IN CONCRETE 0.5 FT BELOW GROUND;
 MARK "FL DOT" DATE SET ^{GPS} 1990

HORIZONTAL CONTROL ORIGINATED ON 1st ORDER HORIZONTAL CONTROL ORIGINATED ON _____ ORDER
 CONTROL BASED ON FLORIDA HIGH PRECISION GPS NETWORK, CONTROL BY _____
 ON NORTH AMERICAN DATUM OF 1983, 1990 ADJUSTMENT ON _____ DATUM
 COORDINATES (FT), 1st ORDER COORDINATES (FT), _____ ORDER
 NORTHING (Y) 865,517.505 NORTHING (Y) _____
 EASTING (X) 717,713.773 EASTING (X) _____

GRID FLORIDA TRANSVERSE MERCATOR RECOVERED BY _____
 ZONE WEST SCALE FACTOR ,999946 DATE, CONDITION _____
 FIELD BOOK _____ PAGE _____



VERTICAL CONTROL ORIGINATED ON 2nd ORDER CONTROL ESTABLISHED BY _____ N. G. S. AND F. D. O. T.
 ON NATIONAL GEODETIC VERTICAL DATUM OF 1929.
 ELEVATION (FT) _____, 3rd ORDER LEVEL BOOK _____ PAGE _____