

LEE COUNTY SURVEY MARK DESCRIPTION



SURVEY CONTROL BY:
DENI ASSOCIATES, INC.
FORT MYERS, FLORIDA

MAPPING BY:
WOOLPERT CONSULTANTS

DESIGNATION GPS LUTZ (GPS 9011) COUNTY LEE STATE FL

LOCATED IN SEC 31 TWP 45 S RGE 24 E USGS QUAD MAP FORT MYERS SW

TO REACH SURVEY MARK FROM Mc GREGOR BLVD & GLADIOLUS RD; GO
SOUTHWESTERLY ALONG Mc GREGOR BLVD 0.5 MILES TO
THE INTERSECTION OF Mc GREGOR BLVD & KAPOK CT. & MARK.

TYPE OF 3" Alum LEE Co Disc in Conc; LEE COUNTY
MARK DENI ASSOCIATES 1990 DATE SET 1990

HORIZONTAL CONTROL ORIGINATED ON 1st ORDER HORIZONTAL CONTROL ORIGINATED ON _____ ORDER

CONTROL BASED ON FLORIDA HIGH PRECISION GPS NETWORK, CONTROL BY _____

ON NORTH AMERICAN DATUM OF 1983, 1990 ADJUSTMENT ON _____ DATUM

COORDINATES (FT), 1st ORDER COORDINATES (FT), _____ ORDER

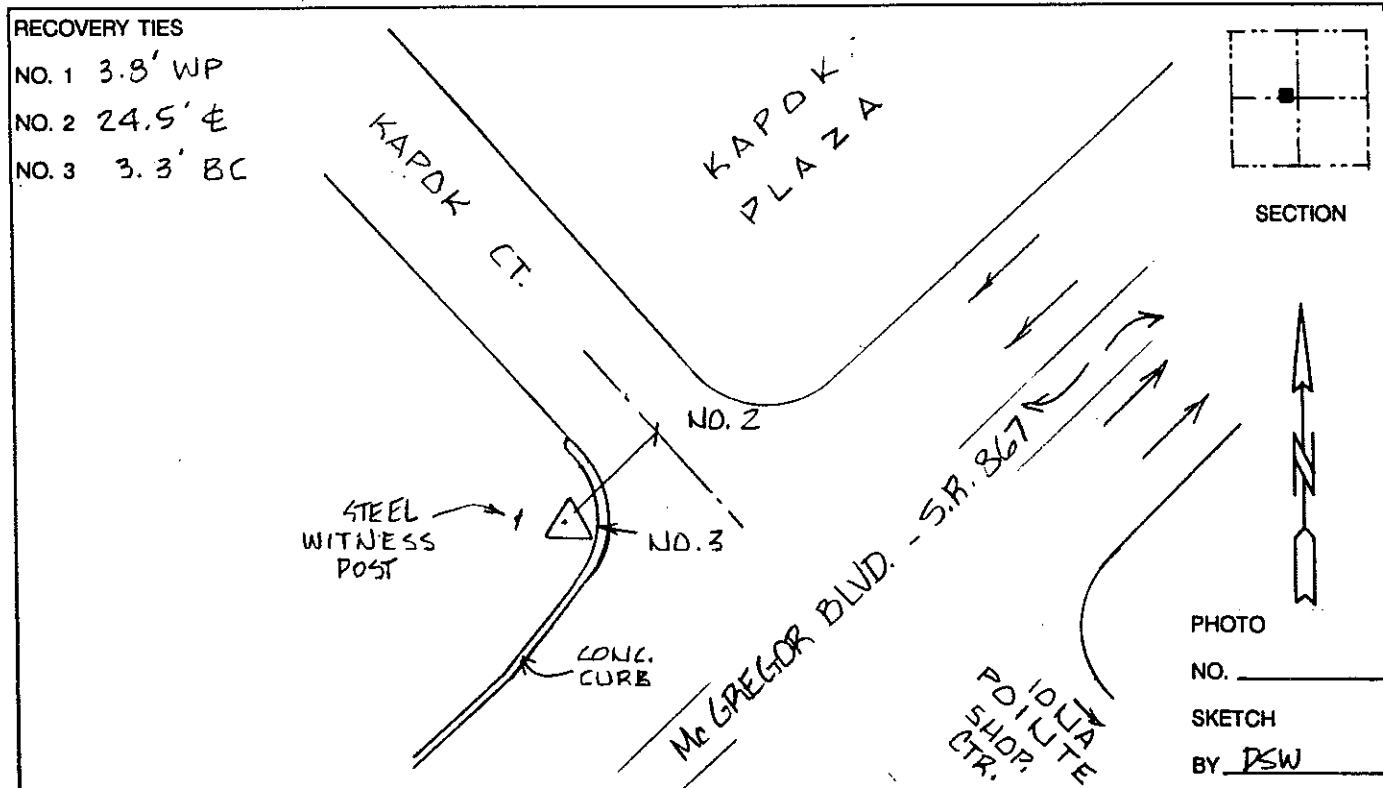
NORTHING (Y) 792,549.676 NORTHING (Y) _____

EASTING (X) 672,712.539 EASTING (X) _____

GRID FLORIDA TRANSVERSE MERCATOR RECOVERED BY _____

ZONE WEST SCALE FACTOR .999941 DATE, CONDITION _____

FIELD BOOK _____ PAGE _____



VERTICAL CONTROL ORIGINATED ON 2nd ORDER CONTROL ESTABLISHED BY N. G. S. AND F. D. O. T.

ON NATIONAL GEODETIC VERTICAL DATUM OF 1929.

ELEVATION (FT) _____ 3rd ORDER LEVEL BOOK _____ PAGE _____