

# LEE COUNTY SURVEY MARK DESCRIPTION



SURVEY CONTROL BY:  
DENI ASSOCIATES, INC.  
FORT MYERS, FLORIDA

MAPPING BY:  
WOOLPERT CONSULTANTS

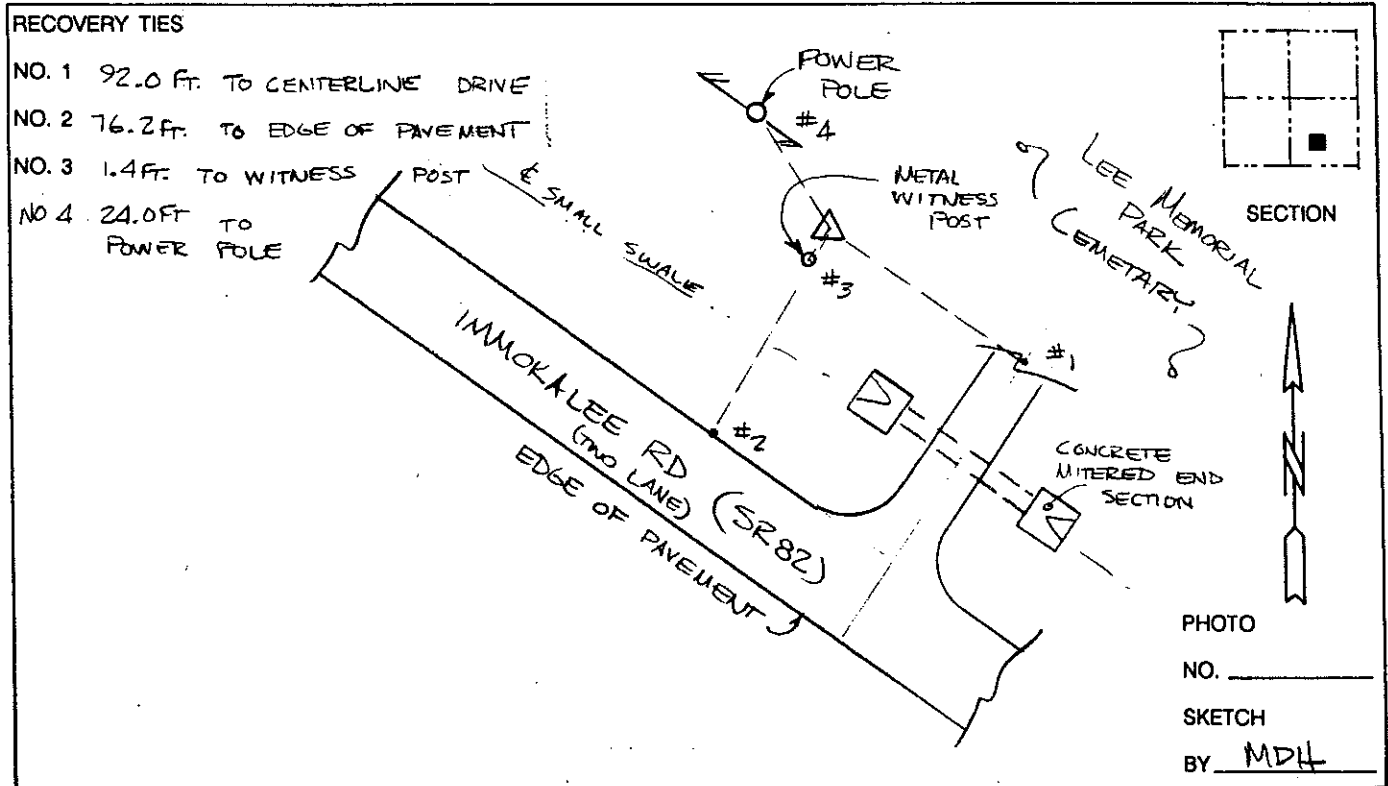
DESIGNATION NGS BUCK (9002) COUNTY LEE STATE FL  
 LOCATED IN SEC 31 TWP 44 S RGE 26 E USGS QUAD MAP ALVA SW  
 TO REACH SURVEY MARK FROM THE INTERSECTION OF GUNNERY RD & IMMOKALEE RD (SR 82); GO NW'LY ON IMMOKALEE RD (SR 82) 2.7 MI TO ENTRANCE ROAD TO LEE MEMORIAL PARK.

TYPE OF 3 1/2" DIAMETER BRASS DISK IN 8" X 8" CONCRETE TABLET;  
 MARK "VSC 865 1956" NGS HIGH PRECISION MARK DATE SET RECOVERED 1990

HORIZONTAL CONTROL ORIGINATED ON 1st ORDER HORIZONTAL CONTROL ORIGINATED ON \_\_\_\_\_ ORDER  
 CONTROL BASED ON FLORIDA HIGH PRECISION GPS NETWORK, CONTROL BY \_\_\_\_\_  
 ON NORTH AMERICAN DATUM OF 1983, 1990 ADJUSTMENT ON \_\_\_\_\_ DATUM  
 COORDINATES (FT), 1st ORDER COORDINATES (FT), \_\_\_\_\_ ORDER  
 NORTHING (Y) 824,588,268 NORTHING (Y) \_\_\_\_\_  
 EASTING (X) 738,395,725 EASTING (X) \_\_\_\_\_

GRID FLORIDA TRANSVERSE MERCATOR RECOVERED BY \_\_\_\_\_  
 ZONE WEST SCALE FACTOR .999949 DATE, CONDITION \_\_\_\_\_

FIELD BOOK \_\_\_\_\_ PAGE \_\_\_\_\_



VERTICAL CONTROL ORIGINATED ON 2nd ORDER CONTROL ESTABLISHED BY N. G. S. AND F. D. O. T.

ON NATIONAL GEODETIC VERTICAL DATUM OF 1929.

ELEVATION (FT) \_\_\_\_\_ 3rd ORDER LEVEL BOOK \_\_\_\_\_ PAGE \_\_\_\_\_