

Fiber Optic Allocation Table			
Fiber Number	Buffer Tube	Fiber Color	Use
1	Blue	Blue	LDOT to MLK Cabinet
2		Orange	
3		Green	LDOT to MLK Cabinet
4		Brown	
5		Slate	LDOT to MLK Cabinet
6		White	
7		Red	LDOT to MLK Cabinet
8		Black	
9		Yellow	LDOT to MLK Cabinet
10		Violet	
11		Rose	LDOT to MLK Cabinet
12		Aqua	
13	Orange	Blue	LDOT to MLK Cabinet
14		Orange	
15		Green	LDOT to MLK Cabinet
16		Brown	
17		Slate	LDOT to MLK Cabinet
18		White	
19		Red	LDOT to MLK Cabinet
20		Black	
21		Yellow	LDOT to MLK Cabinet
22		Violet	
23		Rose	LDOT to MLK Cabinet
24		Aqua	
25	Green	Blue	Vacant
26		Orange	
27		Green	Vacant
28		Brown	
29		Slate	Vacant
30		White	
31		Red	EOC to DOT for ITG USE
32		Black	
33		Yellow	EOC to DOT for ITG USE
34		Violet	
35		Rose	EOC to DOT for ITG USE
36		Aqua	
37	Brown	Blue	LDOT to MLK Cabinet
38		Orange	
39		Green	LDOT to MLK Cabinet
40		Brown	
41		Slate	LDOT to MLK Cabinet
42		White	
43		Red	LDOT to MLK Cabinet
44		Black	
45		Yellow	LDOT to MLK Cabinet
46		Violet	
47		Rose	LDOT to MLK Cabinet
48		Aqua	

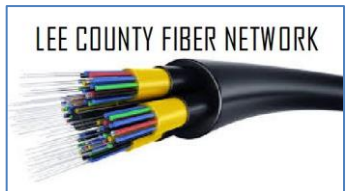
49	Slate	Blue	LDOT to MLK Cabinet
50		Orange	
51		Green	LDOT to MLK Cabinet
52		Brown	
53		Slate	LDOT to MLK Cabinet
54		White	
55		Red	LDOT to MLK Cabinet
56		Black	
57		Yellow	LDOT to MLK Cabinet
58		Violet	
59	Rose	LDOT to MLK Cabinet	
60	Aqua		
61	White	Blue	ITG to JC
62		Orange	
63		Green	ITG to JC
64		Brown	
65		Slate	ITG to JC
66		White	
67		Red	ITG to JC
68		Black	
69		Yellow	ITG to JC
70		Violet	
71	Rose	ITG to JC	
72	Aqua		
73	Red	Blue	ITG to JC
74		Orange	
75		Green	ITG to JC
76		Brown	
77		Slate	ITG to JC
78		White	
79		Red	ITG to JC
80		Black	
81		Yellow	ITG to JC
82		Violet	
83	Rose	ITG to JC	
84	Aqua		
85	Black	Blue	LDOT (TCD) to MLK Cabinet
86		Orange	
87		Green	LDOT (TCD) to MLK Cabinet
88		Brown	
89		Slate	LDOT (TCD) to MLK Cabinet
90		White	
91		Red	VACANT
92		Black	
93		Yellow	VACANT
94		Violet	
95	Rose	VACANT	
96	Aqua		

97	Yellow	Blue	LDOT to MLK Cabinet
98		Orange	
99		Green	LDOT to MLK Cabinet
100		Brown	
101		Slate	LDOT to MLK Cabinet
102		White	
103		Red	LDOT to MLK Cabinet
104		Black	
105		Yellow	LDOT to MLK Cabinet
106		Violet	
107	Rose	LDOT to MLK Cabinet	
108	Aqua		
109	Violet	Blue	LDOT to MLK Cabinet
110		Orange	
111		Green	LDOT to MLK Cabinet
112		Brown	
113		Slate	LDOT to MLK Cabinet
114		White	
115		Red	LDOT to MLK Cabinet
116		Black	
117		Yellow	LDOT to MLK Cabinet
118		Violet	
119	Rose	LDOT to MLK Cabinet	
120	Aqua		
121	Rose	Blue	Vacant
122		Orange	
123		Green	Vacant
124		Brown	
125		Slate	Vacant
126		White	
127		Red	Vacant
128		Black	
129		Yellow	Vacant
130		Violet	
131	Rose	Vacant	
132	Aqua		
133	Aqua	Blue	LCSSO
134		Orange	
135		Green	LCSSO
136		Brown	
137		Slate	LCSSO
138		White	
139		Red	LCSSO
140		Black	
141		Yellow	LCSSO
142		Violet	
143	Rose	LCSSO	
144	Aqua		

LEE COUNTY
144 Count Fiber Allocation

SPLICE DETAIL

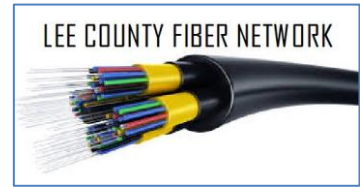
Location: EOC to Colonial SW Corner Cabinet
 2665 Ortiz Ave, Fort Myers, FL 33905



Fiber Optic Allocation Table			
Fiber Number	Buffer Tube	Fiber Color	Use
1	Blue	Blue	LDOT to Colonial Cabinet
2		Orange	
3		Green	LDOT to Colonial Cabinet
4		Brown	
5		Slate	LDOT to Colonial Cabinet
6		White	
7		Red	LDOT to Colonial Cabinet
8		Black	
9		Yellow	LDOT to Colonial Cabinet
10		Violet	
11		Rose	LDOT to Colonial Cabinet
12		Aqua	
13	Orange	Blue	LDOT to Colonial Cabinet
14		Orange	
15		Green	LDOT to Colonial Cabinet
16		Brown	
17		Slate	LDOT to Colonial Cabinet
18		White	
19		Red	LDOT to Colonial Cabinet
20		Black	
21		Yellow	LDOT to Colonial Cabinet
22		Violet	
23		Rose	LDOT to Colonial Cabinet
24		Aqua	
25	Green	Blue	LDOT to Colonial Cabinet
26		Orange	
27		Green	LDOT to Colonial Cabinet
28		Brown	
29		Slate	LDOT to Colonial Cabinet
30		White	
31		Red	LDOT to Colonial Cabinet
32		Black	
33		Yellow	LDOT to Colonial Cabinet
34		Violet	
35		Rose	LDOT to Colonial Cabinet
36		Aqua	
37	Brown	Blue	LDOT to Colonial Cabinet
38		Orange	
39		Green	LDOT to Colonial Cabinet
40		Brown	
41		Slate	LDOT to Colonial Cabinet
42		White	
43		Red	LDOT to Colonial Cabinet
44		Black	
45		Yellow	LDOT to Colonial Cabinet
46		Violet	
47		Rose	LDOT to Colonial Cabinet
48		Aqua	

49	Slate	Blue	LDOT to Colonial Cabinet
50		Orange	
51		Green	LDOT to Colonial Cabinet
52		Brown	
53		Slate	LDOT to Colonial Cabinet
54		White	
55		Red	LDOT to Colonial Cabinet
56		Black	
57		Yellow	LDOT to Colonial Cabinet
58		Violet	
59		Rose	LDOT to Colonial Cabinet
60		Aqua	
61	White	Blue	LDOT to Colonial Cabinet
62		Orange	
63		Green	LDOT to Colonial Cabinet
64		Brown	
65		Slate	LDOT to Colonial Cabinet
66		White	
67		Red	LDOT to Colonial Cabinet
68		Black	
69		Yellow	LDOT to Colonial Cabinet
70		Violet	
71		Rose	LDOT to Colonial Cabinet
72		Aqua	
73	Red	Blue	ITG Vacant
74		Orange	
75		Green	ITG Vacant
76		Brown	
77		Slate	ITG Vacant
78		White	
79		Red	ITG Vacant
80		Black	
81		Yellow	ITG Vacant
82		Violet	
83		Rose	ITG Vacant
84		Aqua	
85	Black	Blue	ITG/Level-3 47/48 DWDM
86		Orange	
87		Green	ITG/Level-3 29/30 SONET
88		Brown	
89		Slate	ITG/Level-3 43/44 INTERNET
90		White	
91		Red	ITG/Level-3 Vacant
92		Black	
93		Yellow	ITG/Level-3 Vacant
94		Violet	
95		Rose	ITG/Level-3 Vacant
96		Aqua	

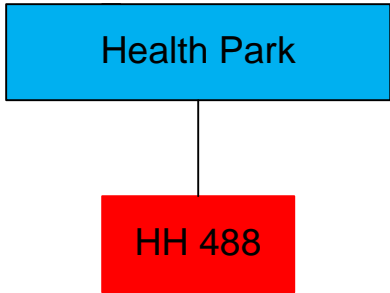
97	Yellow	Blue	VACANT
98		Orange	VACANT
99		Green	VACANT
100		Brown	VACANT
101		Slate	VACANT
102		White	VACANT
103		Red	VACANT
104		Black	VACANT
105		Yellow	VACANT
106		Violet	VACANT
107	Rose	VACANT	
108	Aqua	VACANT	
109	Violet	Blue	VACANT
110		Orange	VACANT
111		Green	VACANT
112		Brown	VACANT
113		Slate	VACANT
114		White	VACANT
115		Red	VACANT
116		Black	VACANT
117		Yellow	VACANT
118		Violet	VACANT
119	Rose	VACANT	
120	Aqua	VACANT	
121	Rose	Blue	VACANT
122		Orange	VACANT
123		Green	VACANT
124		Brown	VACANT
125		Slate	VACANT
126		White	VACANT
127		Red	VACANT
128		Black	VACANT
129		Yellow	VACANT
130		Violet	VACANT
131	Rose	VACANT	
132	Aqua	VACANT	
133	Aqua	Blue	Future LCSO
134		Orange	Future LCSO
135		Green	Future LCSO
136		Brown	Future LCSO
137		Slate	Future LCSO
138		White	Future LCSO
139		Red	Future LCSO
140		Black	Future LCSO
141		Yellow	Future LCSO
142		Violet	Future LCSO
143	Rose	Future LCSO	
144	Aqua	Future LCSO	



Fiber Optic Allocation Table			
Fiber Number	Buffer Tube	Fiber Color	Use
1	Blue	Blue	Fujitsu SONET to EOC 2p
2		Orange	
3		Green	6513 Blade-11 Port-3
4		Brown	
5		Slate	Vacant to JC 6th Floor
6		White	
7		Red	Vacant to JC 6th Floor
8		Black	
9		Yellow	Vacant to JC 6th Floor
10		Violet	
11		Rose	Vacant to JC 6th Floor
12		Aqua	
13	Orange	Blue	Vacant to JC 6th Floor
14		Orange	
15		Green	Vacant to JC 6th Floor
16		Brown	
17		Slate	Vacant to JC 6th Floor
18		White	
19		Red	Vacant to JC 6th Floor
20		Black	
21		Yellow	Vacant to JC 6th Floor
22		Violet	
23		Rose	Vacant to JC 6th Floor
24		Aqua	
25	Green	Blue	47/48 WEST DWDM Level-3
26		Orange	
27		Green	29/30 WEST SONET Level-3
28		Brown	
29		Slate	43/44 INTERNET Level-3
30		White	
31		Red	4020 SONET EOC to DOT
32		Black	
33		Yellow	To DOT Vacant
34		Violet	
35		Rose	To DOT Vacant
36		Aqua	
37	Brown	Blue	TCD Traffic
38		Orange	
39		Green	TCD Traffic
40		Brown	
41		Slate	TCD Traffic
42		White	
43		Red	Vacant
44		Black	
45		Yellow	Vacant
46		Violet	
47		Rose	Vacant
48		Aqua	

Health Park Hospital B Lateral Splice Details

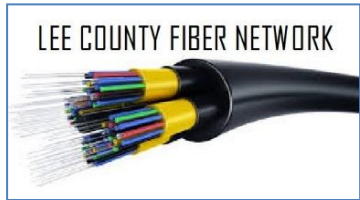
Splice the Health Park Hospital B lateral into HH 488 Lee County 48 Count Tagged Zone 1 with Yellow Tag into the Brown Buffer Tube, pairs 37,38,39,40/ Blue Orange Green Brown Lateral into the Lee Memorial Hospital pairs will be determined by Fiber solutions.



Gladiolus

**ITG 48ct BACKBONE
ALLOCATION TABLE**

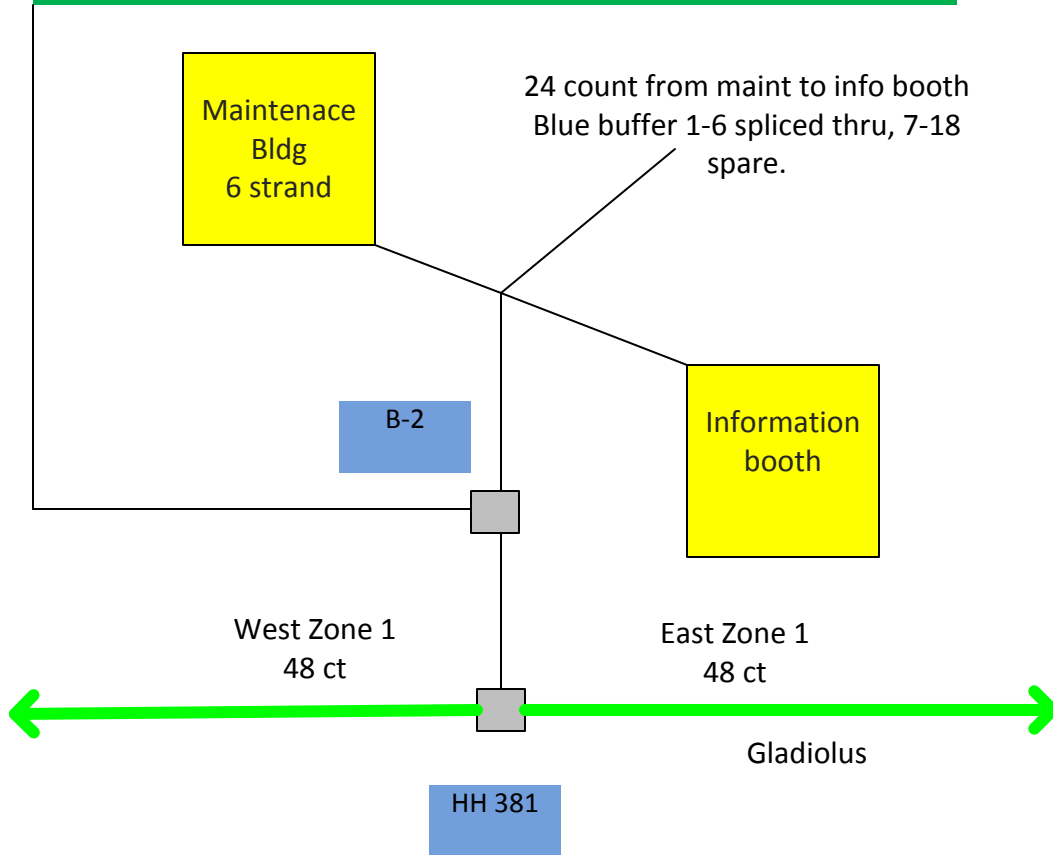
ZONE - 1



48ct Fiber Tube	Pair	Agency	Utilization
Blue	1	ITG	DWDM Core Locations (Justice, Cape Coral EOC, Six Mile PS, LCSO Evidence, EOC DC)
Blue	2	ITG	DWDM Core Locations (Justice, Cape Coral EOC, Six Mile PS, LCSO Evidence, EOC DC)
Blue	3	ITG	DWDM Core Locations (Justice, Cape Coral EOC, Six Mile PS, LCSO Evidence, EOC DC)
Blue	4	ITG	DWDM Core Locations (Justice, Cape Coral EOC, Six Mile PS, LCSO Evidence, EOC DC)
Blue	5	ITG	DWDM Core Locations Spares
Blue	6	ITG	DWDM Core Locations Spares
Blue	7	ITG	DWDM Core Locations Spares
Blue	8	ITG	DWDM Core Locations Spares
Blue	9	ITG	DWDM Core Locations Spares
Blue	10	ITG	DWDM Core Locations Spares
Blue	11	ITG	CISCO (Mars,Dunbar Lib,Justice Center, Records, Lakes Parks, EOC Ortiz
Blue	12	ITG	CISCO (Mars,Dunbar Lib,Justice Center, Records, Lakes Parks, EOC Ortiz
Orange	1	ITG	SONET Locations Spares
Orange	2	ITG	SONET Locations Spares
Orange	3	ITG	SONET Locations Spares
Orange	4	ITG	SONET Locations Spares
Orange	5	ITG	SONET Locations (FLEET)
Orange	6	ITG	SONET Locations (FLEET)
Orange	7	ITG	SONET Locations Spares
Orange	8	ITG	SONET Locations Spares
Orange	9	ITG	SONET Locations (Hammond, Pine Ridge, Lakes Library)
Orange	10	ITG	SONET Locations (Hammond, Pine Ridge, Lakes Library)
Orange	11	ITG	SONET Locations (Hammond, Pine Ridge, Lakes Library)
Orange	12	ITG	SONET Locations (Hammond, Pine Ridge, Lakes Library)
Green	1		LCSO 911
Green	2		LCSO 911
Green	3		LCSO 911
Green	4		LCSO 911
Green	5		LCSO 911
Green	6		LCSO 911
Green	7		City of Ft. Myers
Green	8		City of Ft. Myers
Green	9		City of Ft. Myers
Green	10		City of Ft. Myers
Green	11		City of Sanbel (reserved)
Green	12		City of Sanbel (reserved)
Brown	1		LMHS Collaboration Project
Brown	2		LMHS Collaboration Project
Brown	3		LMHS Collaboration Project
Brown	4		LMHS Collaboration Project
Brown	5		
Brown	6		
Brown	7		
Brown	8		
Brown	9		
Brown	10		ITG/DOT (82 to Daniels along Treeline)
Brown	11		ITG/DOT (82 to Daniels along Treeline)
Brown	12		ITG/DOT (82 to Daniels along Treeline)

Lakes Park Cisco Splice Details

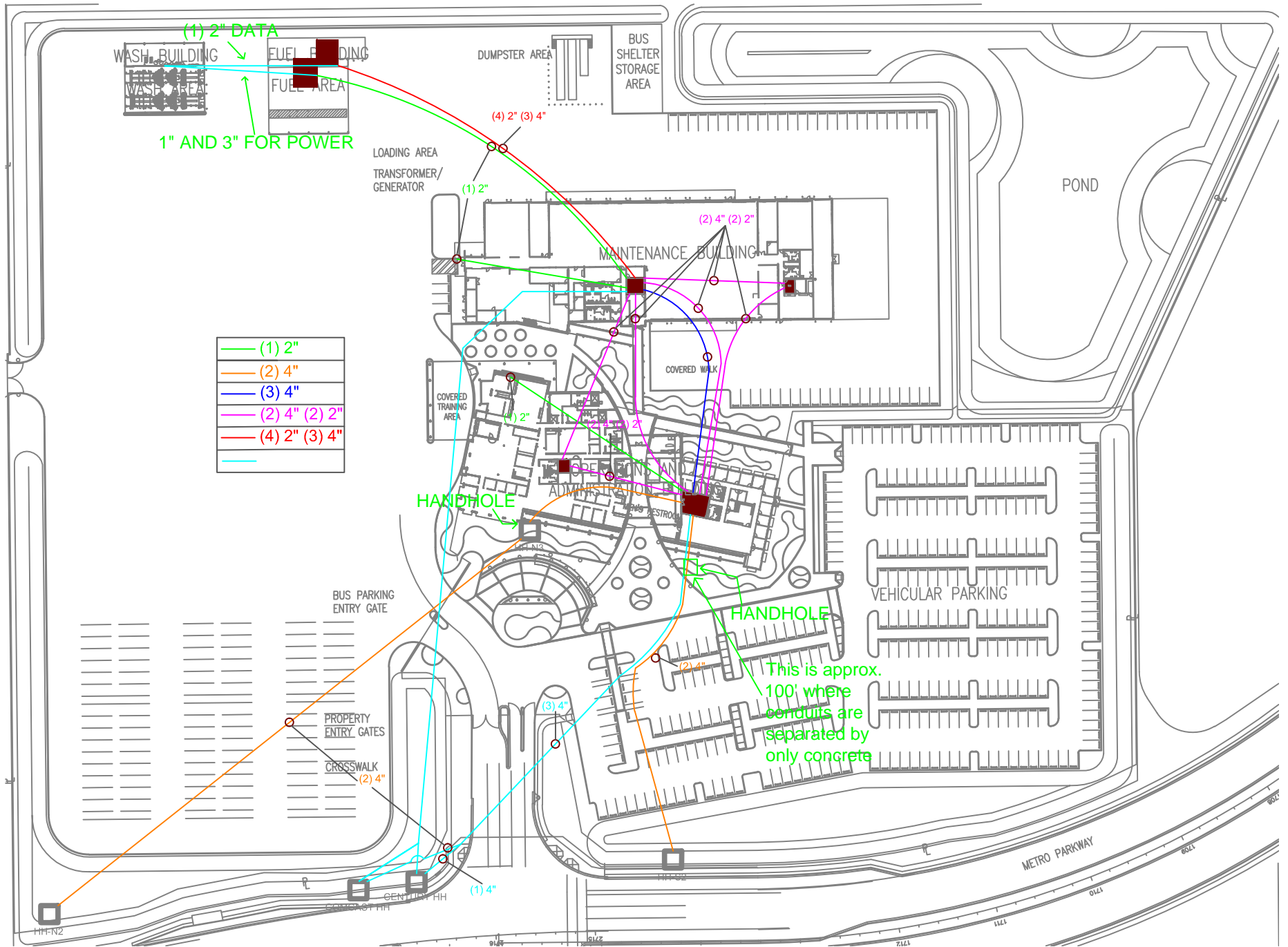
Splice point B2 four fibers Splice fibers 1 & 2 of the New 12ct Blue Buffer (Blue Orange) to Existing 24 count fiber from Maint to Info booth Orange buffer pairs 1 & 2 (Blue Orange) To Maintenance building.
 Splice fibers 11 & 12 of the new 12ct Blue Buffer (Rose Aqua) to existing 24 count Fiber from Maint to Info booth Orange Buffer pairs 11 & 12 (Rose Aqua) To Maintenance building.



Hand Hole 381

Please splice four fibers connecting 12 ct lateral into the 48 ct zone 1 as follows:

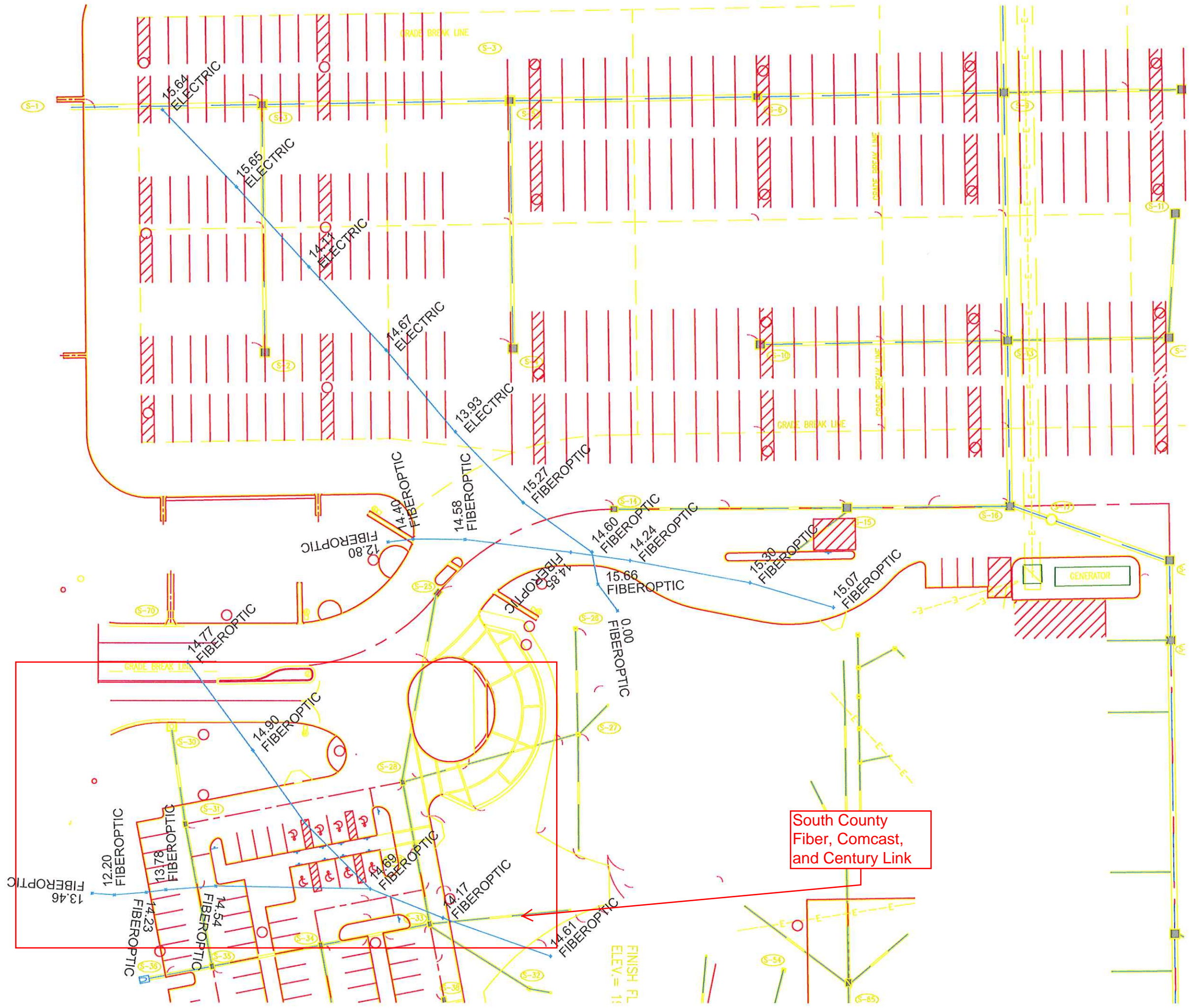
Splice fibers 1 & 2 of the New 12 ct Blue Buffer (Blue Orange) to Existing Zone (1) 48 ct blue buffer pairs 11 & 12 (Rose Aqua) West. Splice 11 & 12 of the New 12 count Blue Buffer (Rose Aqua) to Existing Zone (1) 48 ct blue buffer pairs 11 & 12 to (Rose Aqua) to East.





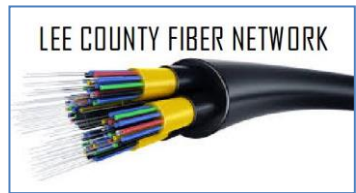
Lee County Fiber

Comcast & Centurylink



South County
Fiber, Comcast,
and Century Link

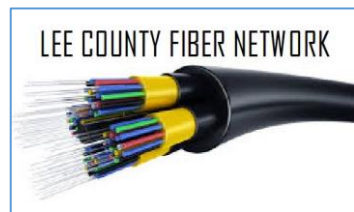
FINISH FL
ELEV. = 11



Fiber Optic Allocation Table			
Fiber Number	Buffer Tube	Fiber Color	Use
1	Blue	Blue	LDOT
2		Orange	
3		Green	
4		Brown	
5		Slate	
6		White	
7		Red	
8		Black	
9		Yellow	
10		Violet	
11		Rose	
12		Aqua	
13	Orange	Blue	144ct DOT
14		Orange	
15		Green	
16		Brown	
17		Slate	
18		White	
19		Red	
20		Black	
21		Yellow	
22		Violet	
23		Rose	
24		Aqua	
25	Green	Blue	
26		Orange	
27		Green	
28		Brown	
29		Slate	
30		White	
31		Red	
32		Black	
33		Yellow	
34		Violet	
35		Rose	
36		Aqua	
37	Brown	Blue	LDOT
38		Orange	
39		Green	
40		Brown	
41		Slate	
42		White	
43		Red	
44		Black	
45		Yellow	
46		Violet	
47		Rose	
48		Aqua	

49	Slate	Blue	LDOT	
50		Orange		
51		Green		
52		Brown		
53		Slate		
54		White		
55		Red		
56		Black		
57		Yellow		
58		Violet		
59	Rose	LDOT		
60	Aqua			
61	Blue			
62	Orange			
63	Green			
64	Brown			
65	Slate			
66	White			
67	Red			
68	Black			
69	Yellow			
70	Violet			
71	Rose			
72	Aqua			
73	Red	Blue		
74		Orange		
75		Green		
76		Brown		
77		Slate		
78		White		
79		Red		
80		Black		
81		Yellow		
82		Violet		
83		Rose		
84		Aqua		
85	Black	Blue	LDOT (TCD)	
86		Orange		
87		Green		
88		Brown		
89		Slate		
90		White		
91		Red		VACANT
92		Black		
93		Yellow		
94		Violet		
95	Rose			
96	Aqua			

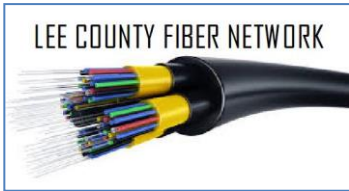
97	Yellow	Blue	LDOT
98		Orange	
99		Green	
100		Brown	
101		Slate	
102		White	
103		Red	
104		Black	
105		Yellow	
106		Violet	
107	Rose	LDOT	
108	Aqua		
109	Blue		
110	Orange		
111	Green		
112	Brown		
113	Slate		
114	White		
115	Red		
116	Black		
117	Yellow		
118	Violet		
119	Rose		
120	Aqua		
121	Rose	Blue	LDOT
122		Orange	
123		Green	
124		Brown	
125		Slate	
126		White	
127		Red	
128		Black	
129		Yellow	
130		Violet	
131	Rose		
132	Aqua		
133	Aqua	Blue	
134		Orange	
135		Green	
136		Brown	
137		Slate	
138		White	
139		Red	
140		Black	
141		Yellow	
142		Violet	
143	Rose		
144	Aqua		



Fiber Optic Allocation Table				
Fiber Number	Buffer Tube	Fiber Color	Use	
1	Blue	Blue	DOT OPEN	
2		Orange		
3		Green	DOT OPEN	
4		Brown		
5		Slate	DOT OPEN	
6		White		
7		Red	DOT OPEN	
8		Black		
9		Yellow	DOT OPEN	
10		Violet		
11		Rose	DOT OPEN	
12		Aqua		
13	Orange	Blue	144 ORANGE TO COLONIAL	
14		Orange		
15		Green		
16		Brown		
17		Slate		
18		White		
19		Red		
20		Black		
21		Yellow		
22		Violet		
23		Rose		
24		Aqua		
25	Green	Blue	N/A GOES TO 96CT IMS	
26		Orange		
27		Green		
28		Brown		
29		Slate		
30		White		
31		Red		144 GREEN TO EOC ITG
32		Black		
33		Yellow		144 GREEN TO EOC ITG
34		Violet		
35		Rose		144 GREEN TO EOC ITG
36		Aqua		
37	Brown	Blue	N/A GOES TO 96CT TO JC FOR ITG	
38		Orange		
39		Green		
40		Brown		
41		Slate		
42		White		
43		Red		
44		Black		
45		Yellow		
46		Violet		
47		Rose		
48		Aqua		

49	Slate	Blue	
50		Orange	
51		Green	
52		Brown	
53		Slate	
54		White	
55		Red	
56		Black	
57		Yellow	
58		Violet	
59		Rose	
60		Aqua	
61	White	Blue	
62		Orange	
63		Green	
64		Brown	
65		Slate	
66		White	
67		Red	
68		Black	
69		Yellow	
70		Violet	
71		Rose	
72		Aqua	
73	Red	Blue	
74		Orange	
75		Green	
76		Brown	
77		Slate	
78		White	
79		Red	
80		Black	
81		Yellow	
82		Violet	
83		Rose	
84		Aqua	
85	Black	Blue	
86		Orange	
87		Green	
88		Brown	
89		Slate	
90		White	
91		Red	
92		Black	
93		Yellow	
94		Violet	
95		Rose	
96		Aqua	

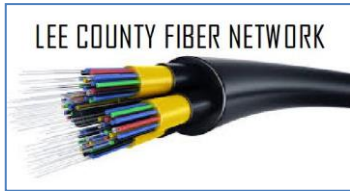
97	Yellow	Blue	
98		Orange	
99		Green	
100		Brown	
101		Slate	
102		White	
103		Red	
104		Black	
105		Yellow	
106		Violet	
107	Rose		
108	Aqua		
109	Violet	Blue	
110		Orange	
111		Green	
112		Brown	
113		Slate	
114		White	
115		Red	
116		Black	
117		Yellow	
118		Violet	
119	Rose		
120	Aqua		
121	Rose	Blue	
122		Orange	
123		Green	
124		Brown	
125		Slate	
126		White	
127		Red	
128		Black	
129		Yellow	
130		Violet	
131	Rose		
132	Aqua		
133	Aqua	Blue	
134		Orange	
135		Green	
136		Brown	
137		Slate	
138		White	
139		Red	
140		Black	
141		Yellow	
142		Violet	
143	Rose		
144	Aqua		



Fiber Optic Allocation Table			
Fiber Number	Buffer Tube	Fiber Color	Use
1	Blue	Blue	
2		Orange	
3		Green	
4		Brown	
5		Slate	
6		White	
7		Red	
8		Black	
9		Yellow	
10		Violet	
11		Rose	
12		Aqua	
13	Orange	Blue	
14		Orange	
15		Green	
16		Brown	
17		Slate	
18		White	
19		Red	
20		Black	
21		Yellow	
22		Violet	
23		Rose	
24		Aqua	
25	Green	Blue	N/A
26		Orange	N/A
27		Green	N/A
28		Brown	N/A
29		Slate	N/A
30		White	N/A
31		Red	N/A
32		Black	N/A
33		Yellow	N/A
34		Violet	N/A
35		Rose	N/A
36		Aqua	N/A
37	Brown	Blue	N/A
38		Orange	N/A
39		Green	N/A
40		Brown	N/A
41		Slate	N/A
42		White	N/A
43		Red	N/A
44		Black	N/A
45		Yellow	N/A
46		Violet	N/A
47		Rose	N/A
48		Aqua	N/A

49	Slate	Blue	N/A
50		Orange	N/A
51		Green	N/A
52		Brown	N/A
53		Slate	N/A
54		White	N/A
55		Red	N/A
56		Black	N/A
57		Yellow	N/A
58		Violet	N/A
59		Rose	N/A
60		Aqua	N/A
61	White	Blue	144 White to EOC for ITG
62		Orange	144 White to EOC for ITG
63		Green	144 White to EOC for ITG
64		Brown	144 White to EOC for ITG
65		Slate	144 White to EOC for ITG
66		White	144 White to EOC for ITG
67		Red	144 White to EOC for ITG
68		Black	144 White to EOC for ITG
69		Yellow	144 White to EOC for ITG
70		Violet	144 White to EOC for ITG
71		Rose	144 White to EOC for ITG
72		Aqua	144 White to EOC for ITG
73	Red	Blue	144 Red to EOC for ITG
74		Orange	144 Red to EOC for ITG
75		Green	144 Red to EOC for ITG
76		Brown	144 Red to EOC for ITG
77		Slate	144 Red to EOC for ITG
78		White	144 Red to EOC for ITG
79		Red	144 Red to EOC for ITG
80		Black	144 Red to EOC for ITG
81		Yellow	144 Red to EOC for ITG
82		Violet	144 Red to EOC for ITG
83		Rose	144 Red to EOC for ITG
84		Aqua	144 Red to EOC for ITG
85	Black	Blue	144 Aqua to LCSO
86		Orange	144 Aqua to LCSO
87		Green	144 Aqua to LCSO
88		Brown	144 Aqua to LCSO
89		Slate	144 Aqua to LCSO
90		White	144 Aqua to LCSO
91		Red	144 Aqua to LCSO
92		Black	144 Aqua to LCSO
93		Yellow	144 Aqua to LCSO
94		Violet	144 Aqua to LCSO
95		Rose	144 Aqua to LCSO
96		Aqua	144 Aqua to LCSO

97	Yellow	Blue	
98		Orange	
99		Green	
100		Brown	
101		Slate	
102		White	
103		Red	
104		Black	
105		Yellow	
106		Violet	
107	Rose		
108	Aqua		
109	Violet	Blue	
110		Orange	
111		Green	
112		Brown	
113		Slate	
114		White	
115		Red	
116		Black	
117		Yellow	
118		Violet	
119	Rose		
120	Aqua		
121	Rose	Blue	
122		Orange	
123		Green	
124		Brown	
125		Slate	
126		White	
127		Red	
128		Black	
129		Yellow	
130		Violet	
131	Rose		
132	Aqua		
133	Aqua	Blue	
134		Orange	
135		Green	
136		Brown	
137		Slate	
138		White	
139		Red	
140		Black	
141		Yellow	
142		Violet	
143	Rose		
144	Aqua		



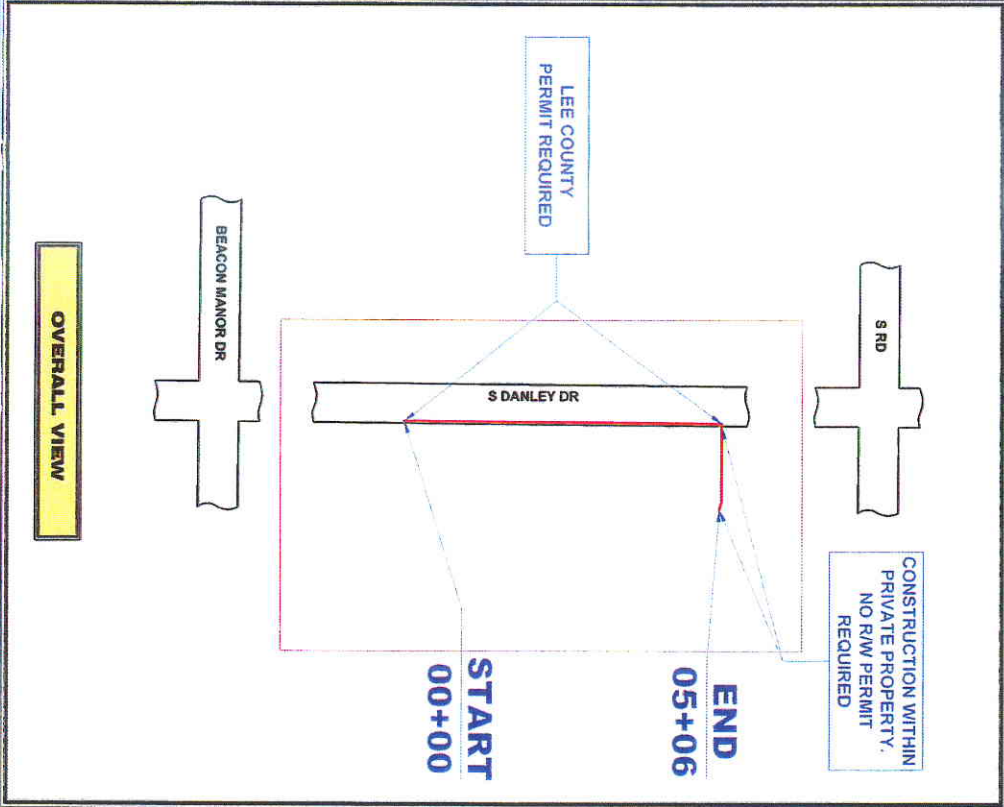
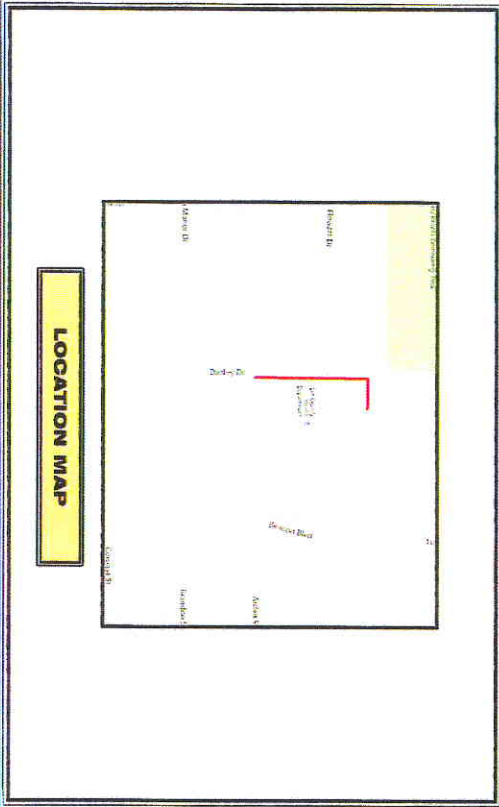
Fiber Optic Allocation Table			
Fiber Number	Buffer Tube	Fiber Color	Use
1	Blue	Blue	N/A
2		Orange	N/A
3		Green	N/A
4		Brown	N/A
5		Slate	N/A
6		White	N/A
7		Red	N/A
8		Black	N/A
9		Yellow	N/A
10		Violet	N/A
11		Rose	N/A
12		Aqua	N/A
13	Orange	Blue	N/A
14		Orange	N/A
15		Green	N/A
16		Brown	N/A
17		Slate	N/A
18		White	N/A
19		Red	N/A
20		Black	N/A
21		Yellow	N/A
22		Violet	N/A
23		Rose	N/A
24		Aqua	N/A
25	Green	Blue	48ct Green to DOT for IMS
26		Orange	48ct Green to DOT for IMS
27		Green	48ct Green to DOT for IMS
28		Brown	48ct Green to DOT for IMS
29		Slate	48ct Green to DOT for IMS
30		White	48ct Green to DOT for IMS
31		Red	N/A
32		Black	N/A
33		Yellow	N/A
34		Violet	N/A
35		Rose	N/A
36		Aqua	N/A
37	Brown	Blue	48ct Brown to DOT for ITG
38		Orange	48ct Brown to DOT for ITG
39		Green	48ct Brown to DOT for ITG
40		Brown	48ct Brown to DOT for ITG
41		Slate	48ct Brown to DOT for ITG
42		White	48ct Brown to DOT for ITG
43		Red	48ct Brown to DOT for ITG
44		Black	48ct Brown to DOT for ITG
45		Yellow	48ct Brown to DOT for ITG
46		Violet	48ct Brown to DOT for ITG
47		Rose	48ct Brown to DOT for ITG
48		Aqua	48ct Brown to DOT for ITG

49	Slate	Blue	
50		Orange	
51		Green	
52		Brown	
53		Slate	
54		White	
55		Red	
56		Black	
57		Yellow	
58		Violet	
59		Rose	
60		Aqua	
61	White	Blue	
62		Orange	
63		Green	
64		Brown	
65		Slate	
66		White	
67		Red	
68		Black	
69		Yellow	
70		Violet	
71		Rose	
72		Aqua	
73	Red	Blue	
74		Orange	
75		Green	
76		Brown	
77		Slate	
78		White	
79		Red	
80		Black	
81		Yellow	
82		Violet	
83		Rose	
84		Aqua	
85	Black	Blue	
86		Orange	
87		Green	
88		Brown	
89		Slate	
90		White	
91		Red	
92		Black	
93		Yellow	
94		Violet	
95		Rose	
96		Aqua	

97	Yellow	Blue	
98		Orange	
99		Green	
100		Brown	
101		Slate	
102		White	
103		Red	
104		Black	
105		Yellow	
106		Violet	
107		Rose	
108	Aqua		
109	Violet	Blue	
110		Orange	
111		Green	
112		Brown	
113		Slate	
114		White	
115		Red	
116		Black	
117		Yellow	
118		Violet	
119		Rose	
120	Aqua		
121	Rose	Blue	
122		Orange	
123		Green	
124		Brown	
125		Slate	
126		White	
127		Red	
128		Black	
129		Yellow	
130		Violet	
131		Rose	
132	Aqua		
133	Aqua	Blue	
134		Orange	
135		Green	
136		Brown	
137		Slate	
138		White	
139		Red	
140		Black	
141		Yellow	
142		Violet	
143		Rose	
144	Aqua		

HDBE CONDUIT
FIBER 400

**LEE COUNTY MEDICAL EXAMINER
ENVIRONMENTAL LAB
70 DANLEY DR
FORT MYERS, FL 33907**



REVISIONS

DATE	DESCRIPTION	INITIAL
04/07/2016	ORIGINAL SUBMITTAL	DPH

FOR PERMIT

PROJECT NUMBER	70 DANLEY DR
PROJECT ADDRESS	70 DANLEY DR, FORT MYERS, FL 33907
PROJECT OWNER	LEE COUNTY MEDICAL EXAMINER ENVIRONMENTAL LAB
PROJECT TYPE	CONDUIT
DATE FOR	05
TOTAL CONDUIT FOOTAGE	505

F.O.C. FOOTAGE (THIS SHEET)

FIBER COUNT	FEET	CONDUIT	QTY FOOTAGE
# BLACK (00)	1	12"	12
# BLACK (05)	1	12"	12
# BLACK (06)	1	12"	12
# BLACK (07)	1	12"	12
# BLACK (08)	1	12"	12
# BLACK (09)	1	12"	12
# BLACK (10)	1	12"	12
# BLACK (11)	1	12"	12
# BLACK (12)	1	12"	12
# BLACK (13)	1	12"	12
# BLACK (14)	1	12"	12
# BLACK (15)	1	12"	12
# BLACK (16)	1	12"	12
# BLACK (17)	1	12"	12
# BLACK (18)	1	12"	12
# BLACK (19)	1	12"	12
# BLACK (20)	1	12"	12
# BLACK (21)	1	12"	12
# BLACK (22)	1	12"	12
# BLACK (23)	1	12"	12
# BLACK (24)	1	12"	12
# BLACK (25)	1	12"	12
# BLACK (26)	1	12"	12
# BLACK (27)	1	12"	12
# BLACK (28)	1	12"	12
# BLACK (29)	1	12"	12
# BLACK (30)	1	12"	12
# BLACK (31)	1	12"	12
# BLACK (32)	1	12"	12
# BLACK (33)	1	12"	12
# BLACK (34)	1	12"	12
# BLACK (35)	1	12"	12
# BLACK (36)	1	12"	12
# BLACK (37)	1	12"	12
# BLACK (38)	1	12"	12
# BLACK (39)	1	12"	12
# BLACK (40)	1	12"	12
# BLACK (41)	1	12"	12
# BLACK (42)	1	12"	12
# BLACK (43)	1	12"	12
# BLACK (44)	1	12"	12
# BLACK (45)	1	12"	12
# BLACK (46)	1	12"	12
# BLACK (47)	1	12"	12
# BLACK (48)	1	12"	12
# BLACK (49)	1	12"	12
# BLACK (50)	1	12"	12
# BLACK (51)	1	12"	12
# BLACK (52)	1	12"	12
# BLACK (53)	1	12"	12
# BLACK (54)	1	12"	12
# BLACK (55)	1	12"	12
# BLACK (56)	1	12"	12
# BLACK (57)	1	12"	12
# BLACK (58)	1	12"	12
# BLACK (59)	1	12"	12
# BLACK (60)	1	12"	12
# BLACK (61)	1	12"	12
# BLACK (62)	1	12"	12
# BLACK (63)	1	12"	12
# BLACK (64)	1	12"	12
# BLACK (65)	1	12"	12
# BLACK (66)	1	12"	12
# BLACK (67)	1	12"	12
# BLACK (68)	1	12"	12
# BLACK (69)	1	12"	12
# BLACK (70)	1	12"	12
# BLACK (71)	1	12"	12
# BLACK (72)	1	12"	12
# BLACK (73)	1	12"	12
# BLACK (74)	1	12"	12
# BLACK (75)	1	12"	12
# BLACK (76)	1	12"	12
# BLACK (77)	1	12"	12
# BLACK (78)	1	12"	12
# BLACK (79)	1	12"	12
# BLACK (80)	1	12"	12
# BLACK (81)	1	12"	12
# BLACK (82)	1	12"	12
# BLACK (83)	1	12"	12
# BLACK (84)	1	12"	12
# BLACK (85)	1	12"	12
# BLACK (86)	1	12"	12
# BLACK (87)	1	12"	12
# BLACK (88)	1	12"	12
# BLACK (89)	1	12"	12
# BLACK (90)	1	12"	12
# BLACK (91)	1	12"	12
# BLACK (92)	1	12"	12
# BLACK (93)	1	12"	12
# BLACK (94)	1	12"	12
# BLACK (95)	1	12"	12
# BLACK (96)	1	12"	12
# BLACK (97)	1	12"	12
# BLACK (98)	1	12"	12
# BLACK (99)	1	12"	12
# BLACK (100)	1	12"	12

INDEX OF SHEETS

SHEET N°	DESCRIPTION
001 OF 001 TO 001 OF 001	PLAN
014 OF 001 TO 014 OF 001	PROFILE
015 - 000	015 - 000

ElectricCom
At the right connection.
1-800-451-4444
1-800-451-4444

DIRECTION OF ENGINEERING
N

Lee County Information Technology Department
811
Call Now! 888-888-8888

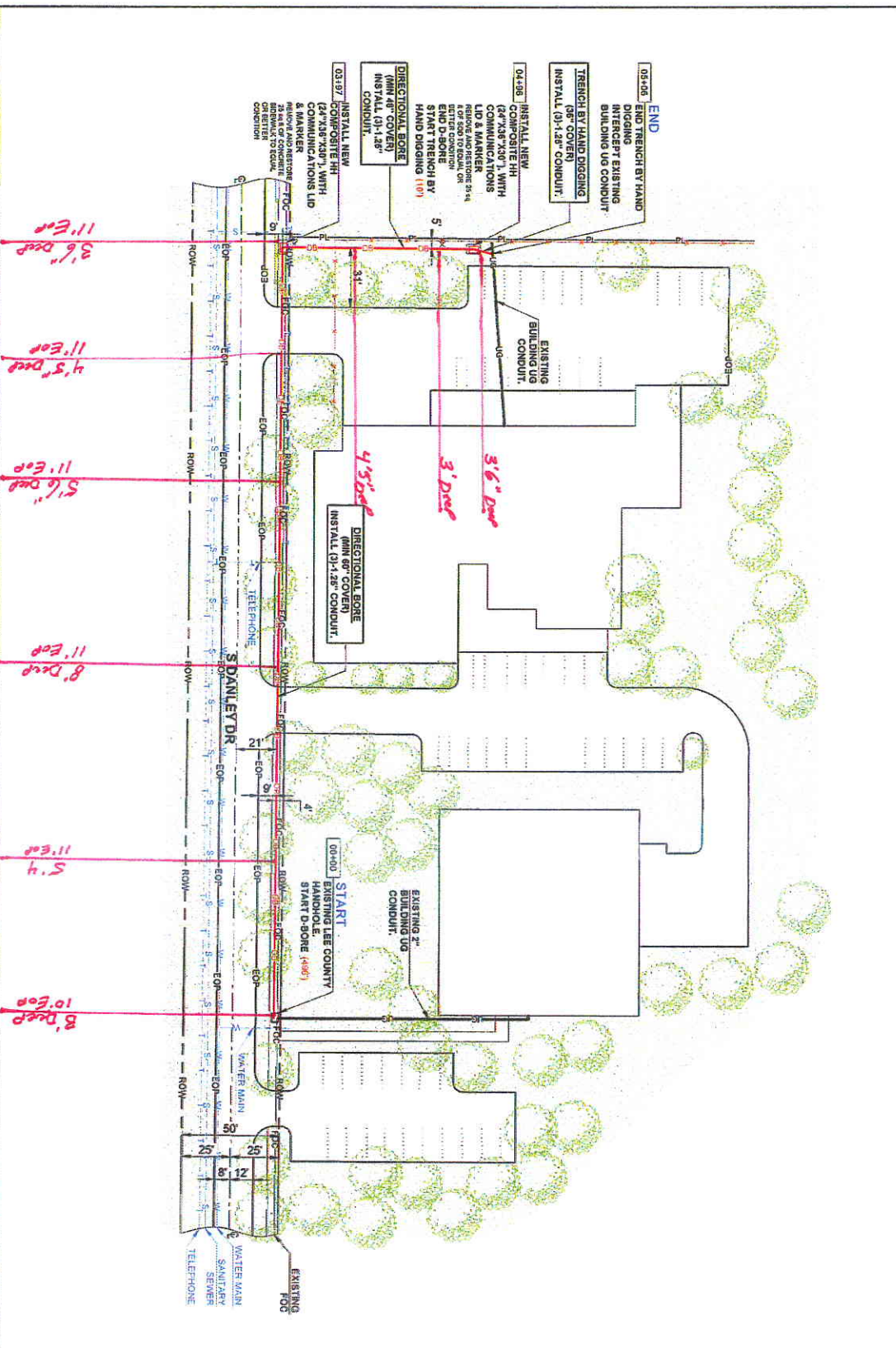
LEE COUNTY SOUTHWEST FLORIDA INFORMATION TECHNOLOGY DEPARTMENT

FIBER OPTIC CABLE INSTALLATION

FIBER OPTIC CABLE INSTALLATION

REVISIONS	
DATE	DESCRIPTION
08/27/23	ORIGINAL SUBMITTAL

811
Call before you dig
www.811.com



F.O.C. FOOTAGE (THIS SHEET)

FIBER COUNT	FEET
3 BLACK (100)	180
4 BLACK (00)	10
4 BLACK (00)	10
UNTERMINING	10
AIRIAL	10
IN-RILE BUILDING ATTACHMENT	10
TOTAL FOC FOOTAGE	230

CONDUIT FOOTAGE (THIS SHEET)

TYPE OF CONDUIT	INSTALL
TRENCH HAND DUGGING	180
DIRECTIONAL BORE	10
RIGID ATTACHMENT	10
STARTING CONDUIT	10
TOTAL CONDUIT FOOTAGE	210

FOR PERMIT

INSPECTOR: LEE COUNTY MEDICAL EXAMINER ENVIRONMENTAL LAB
PROJECT NO: 70 DANALY DR
OWNER: DANALY DR
DESIGNER: [Redacted]
DATE: [Redacted]
SCALE: [Redacted]

ElectricCom
At the right convenience

CONSTRUCTION NOTES:

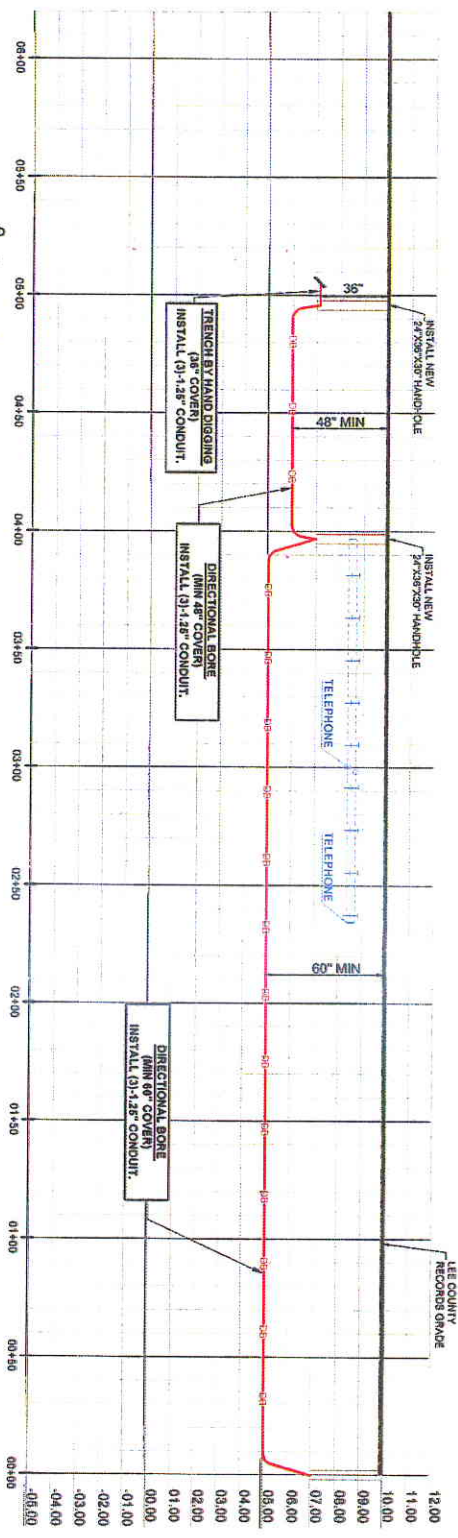
- ALL DAMAGED SURFACES ARE TO BE RESTORED TO PREVIOUS CONDITION OR BETTER.
- ALL MEASUREMENTS AND DISTANCES ARE TO BE VERIFIED ON FIELD.
- MINIMUM 3" SEPARATION IS TO BE MAINTAINED BETWEEN EXISTING UTILITY AND NEW CONDUIT.
- MINIMUM 8" RADIIUS IS TO BE MAINTAINED ON ALL CONDUIT BENDING.

DIRECTION OF CONDUITWORK

REMARKS: [Redacted]
DATE: [Redacted]
BY: [Redacted]

In outdoor areas only.

"UNKNOWN ELEVATION"
NO ELEVATION RECORDS AVAILABLE,
CONTRACTOR SHALL VERIFY DEPTH
BEFORE BORING



PROFILE - PRIVATE PROPERTY
HORIZONTAL SCALE 1"=50'
VERTICAL SCALE 1"=5'

PROFILE - S DANLEY DR
HORIZONTAL SCALE 1"=50'
VERTICAL SCALE 1"=5'



FIBER OPTIC CABLE INSTALLATION

REVISIONS	
DATE	DESCRIPTION
08/27/2015	ORIGINAL SUBMITTAL

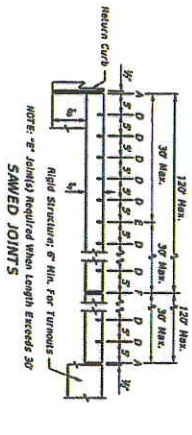


FOR PERMIT

PROJECT NUMBER: 70 DANLEY DR
 PROJECT NAME: FIBER OPTIC CABLE INSTALLATION
 PROJECT ADDRESS: 70 DANLEY DR, DELEWICH, FL 33426
 PROJECT CONTACT: GREGORY A. JOHNSON, P.E.
 PROJECT PHONE: 888-888-8888
 PROJECT FAX: 888-888-8888
 PROJECT EMAIL: GJOHNSON@ELECTRICOM.COM

ElectricCom
ALL THE RIGHT CONNECTIONS.

1001 W. US HWY 1, SUITE 100, DELEWICH, FL 33426
 888-888-8888
 www.electricom.com



LONGITUDINAL SECTION (NOT TO SCALE)

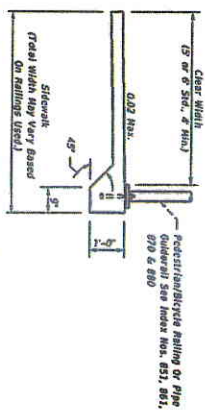
JOINT LEGEND

- A-1/2" Expansion Joints (Preformed Joint Filler)
- B-1/2" Dummy Joints, Tied
- C-1/2" Formed Open Joints
- D-1/4" Saw Cut Joints, 1/2" Deep (within 96 hours) Max. 2' Centers
- E-1/4" Saw Cut Joints, 1 1/2" Deep (within 12 hours) Max. 30' Centers
- F-1/2" Expansion Joint (When Max of Sidewalk Exceeds 120', Intermediate Locations When Called For in the Plans or at Locations as Directed by the Engineer.
- G-Cold Joint With Bond Breaker, Tied

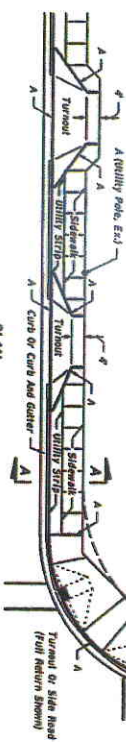
SIDEWALK JOINTS

NOTES FOR CONCRETE SIDEWALK ON CURBED ROADWAYS

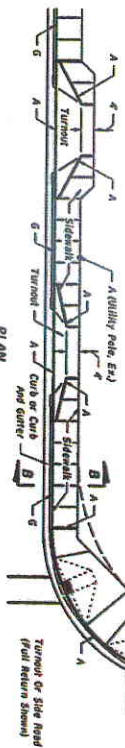
1. Sidewalk shall be constructed in accordance with Specification Section 523. Sidewalk curb ramps shall include detectable warnings and be constructed in accordance with Florida Statute 354. Detectable warnings are not required where sidewalks intersect with flared turnouts.
2. Bond breaker material can be any impermeable coated or sheet membrane or preformed material having a thickness of not less than 6 mils nor more than 1/2".
3. For turnouts see Index No. 515.
4. Construct sidewalks with 1" thick Edge Beam through the limits of any surface mounted Pedestrian/Bicycle Picket Railing or Pipe Guardrail shown in the plans.



SIDEWALK WITH EDGE BEAM FOR SURFACE MOUNTED RAILINGS



SECTION AA



SECTION BB



CONCRETE SIDEWALK ON CURBED ROADWAYS

FDOT 2015 DESIGN STANDARDS

CONCRETE SIDEWALK

INDEX NO. 310 SHEET NO. 1 OF 2

LAST REVISION	DESCRIPTION
07/01/13	



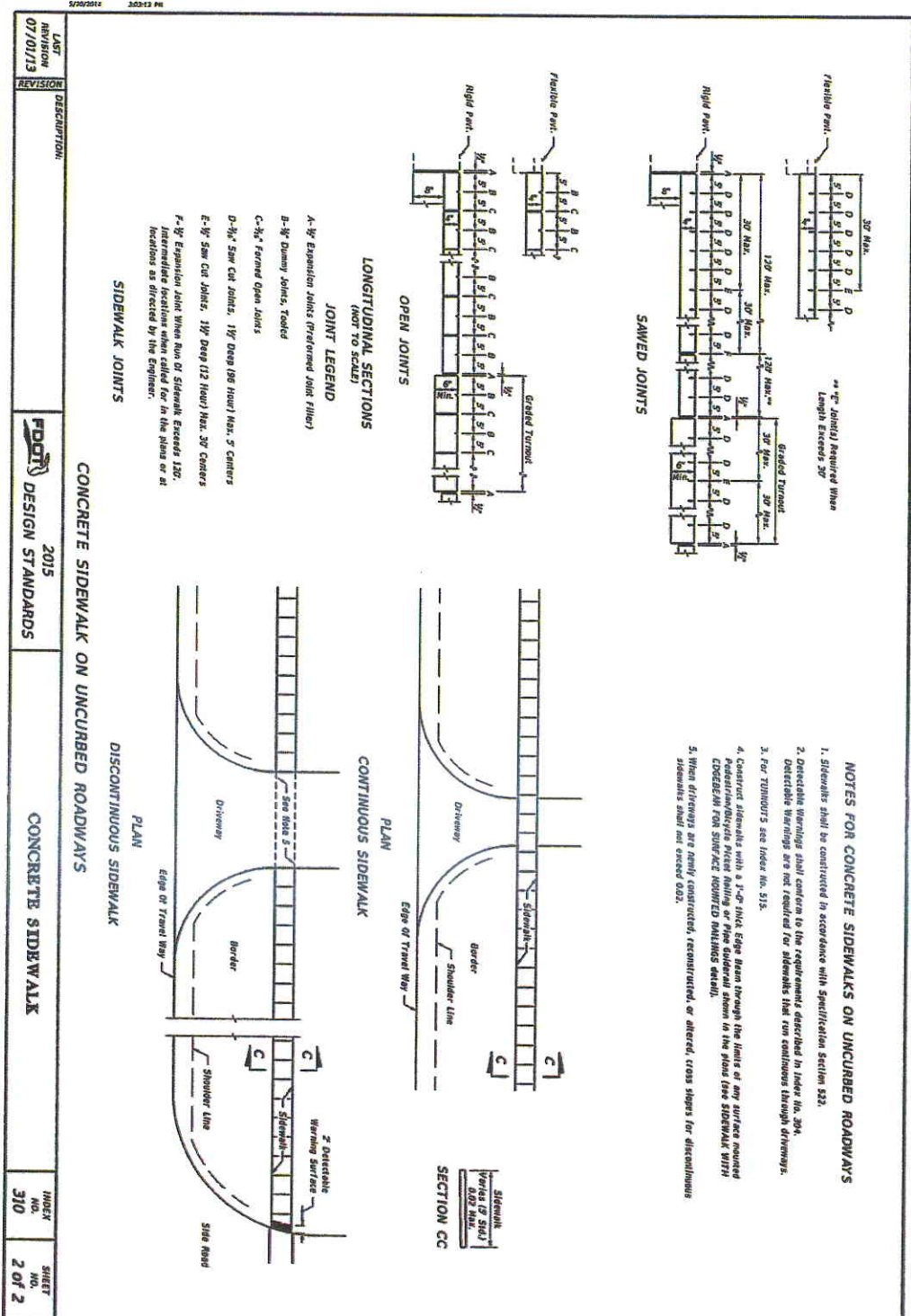
FIBER OPTIC CABLE INSTALLATION

DATE	REVISIONS	INITIAL
08/20/15	ORIGINAL SUBMITTAL	CPH



LEECOUNTY MEDICAL EXAMINER ENHANCING HEALTH CARE
 PROJECT MANAGER: 70 DANLEY DR. 33904
 PROJECT NO.: 1320 989 2824
 CONTRACT NO.: 70 DANLEY DR., DESIGN
 DATE: NOV 2013
 SHEET NO.: 310 (1)

310 (1)



NOTES FOR CONCRETE SIDEWALKS ON UNCURBED ROADWAYS

1. Sidewalks shall be constructed in accordance with Specification Section 523.
2. Detectable Warnings shall conform to the requirements described in Index No. 304. Detectable Warnings are not required for sidewalks that run continuous through driveways.
3. For TURNOUTS see Index No. 515.
4. Construct sidewalks with a 3/4" thick Edge Beam through the limits of any surface mounted Pedestrian/Bicyclist Height Marking or Fine Grained Stone in the plans (see SIDEWALK WITH EDGE BEAM FOR SURFACE MOUNTED MARKINGS detail).
5. When driveways are newly constructed, reconstructed, or altered, cross slopes for discontinuous sidewalks shall not exceed 0.5%.

JOINT LEGEND

- A-1/2" Expansion Joints (Preferred Joint Filter)
- B-3/4" Dummy Joints, Tied
- C-3/4" Formed Open Joints
- D-3/4" Saw Cut Joints, 1/2" Deep (96 Hour) Max. 5' Centers
- E-3/4" Saw Cut Joints, 1 1/2" Deep (12 Hour) Max. 30' Centers
- F-1/2" Expansion Joint When Run of Sidewalk Exceeds 120'. Intermediate locations when called for in the plans or at locations as directed by the Engineer.

LAST REVISION	DESCRIPTION	INDEX NO.	SHEET NO.
07/01/13		310	2 OF 2

CONCRETE SIDEWALK ON UNCURBED ROADWAYS

FDOT 2015 DESIGN STANDARDS

CONCRETE SIDEWALK

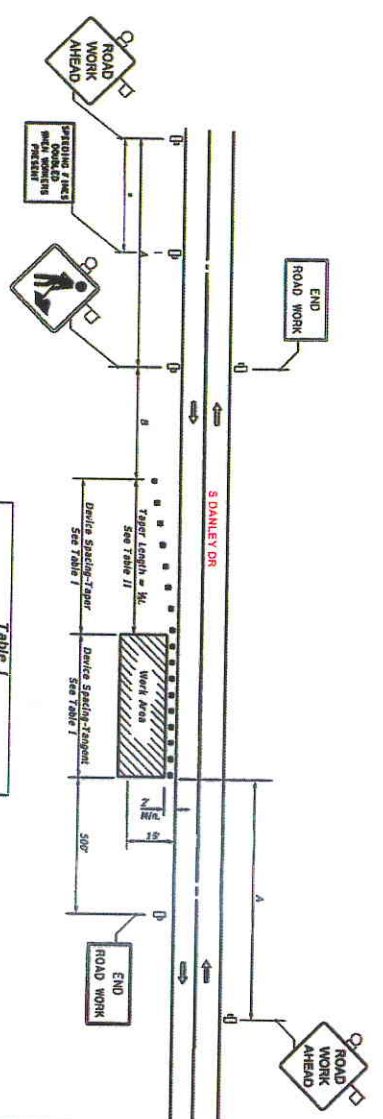


FIBER OPTIC CABLE INSTALLATION

DATE	DESCRIPTION	INITIAL
08/07/2015	ORIGINAL SUBMITTAL	UP



PROJECT NUMBER	76 DANLEY DR
CLIENT	LEE COUNTY MEDICAL EXAMINER ENVIRONMENTAL LAB
DESIGNER	76 DANLEY DR
DATE	NOV 13 2015
PROJECT NUMBER	310 (2)



DISTANCE BETWEEN SIGNS

Speed (mph)	Spacing (ft.)
40 mph or less	200
45 mph	300
50 mph or greater	500

Midway between signs.

Table 1
Device Spacing

Speed (mph)	Max. Distance Between Devices (ft.)
25	25
30 to 45	25
50 to 70	50

Table II
Taper Length - Shoulder

Speed (mph)	W (ft)	Notes
25	20	12'
30	40	30'
35	50	42'
40	60	60'
45	75	60'
50	100	80'
55	125	100'
60	150	120'
65	175	150'
70	200	180'
75	225	210'
80	250	240'

SYMBOLS

- Work Area
- Sign with 10' x 10' (hatched) orange flag and Type B Light
- Channelizing Device (see Index No. 600)
- Work Zone Sign
- Lane Identification + Direction of Traffic

GENERAL NOTES

1. When four or more work vehicles enter the through traffic lanes in a one hour period or less (excluding establishing and terminating the work area), the advanced and reduced signs may be substituted for the workers sign, for location of flaggers and reduced signs, see Index No. 600.
2. **SHOULDER WORK** sign may be used as an alternate to the workers symbol sign only on the side where the shoulder work is being performed.
3. When a side road intersects the highway within the TTC zone, additional TTC devices shall be placed in accordance with other applicable TTC standards.
4. For general TTC requirements and additional information, refer to Index No. 600.

DURATION NOTES

1. Signs and channelizing devices may be omitted if all of the following conditions are met:
 - a. Work operations are 40 minutes or less.
 - b. Vehicles in the work area have high-intensity, flashing, flashing, oscillating, or strobe light operation.

W = Width of total shoulder in feet (combined paved and unpaved width)
 S = Posted speed limit (mph)
 # minimum shoulder width

CONDITIONS

WHEN ANY VEHICLE, EQUIPMENT, WORKERS OR THEIR ACTIVITIES ENCOMPASS THE AREA CLOSER THAN 15' BUT NOT CLOSER THAN 2' TO THE EDGE OF TRAVEL WAY.

LAST REVISION: 07/01/12

2015 FDOT DESIGN STANDARDS

TWO-LANE, TWO-WAY, WORK ON SHOULDER

WORK NO. 602
SHEET NO. 1 OF 1



FIBER OPTIC CABLE INSTALLATION

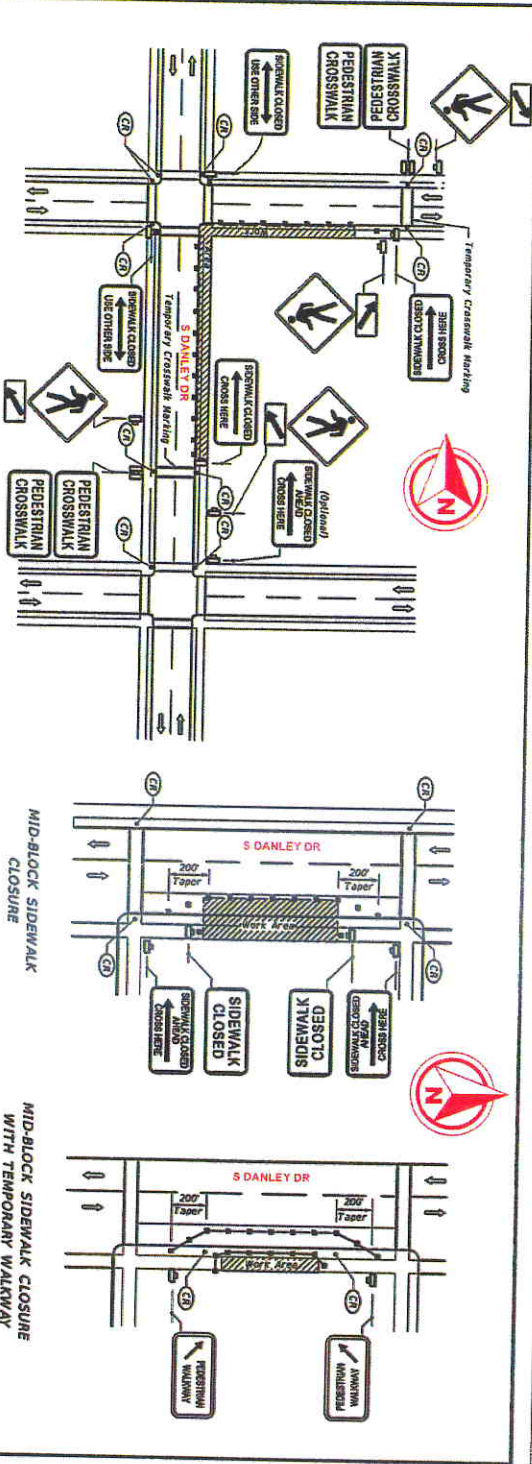
REVISIONS

DATE	DESCRIPTION	INITIAL
09/07/2015	ORIGINAL SUBMITTAL	LPH



PROJECT: 79 DANLEY DR
 CONTRACT NO.: 12501000000000000000
 CONTRACTOR: CHAFFIN, INC.
 DATE: NOV 2012

602



GENERAL NOTES

1. Only the signs controlling pedestrian flows are shown. Other work zone signs will be needed to control traffic on the streets.
2. For spacing of traffic control devices and general TCD requirements refer to Manual 600. Maximum spacing between barricades, vertical panels, cones or other markers shall not be greater than 35.
3. Street lighting should be considered.
4. For nighttime closures use Type A flashing warning lights on barricades supporting signs and flashing safety signs on C steady-burn signs on channelizing devices separating the work area from vehicular traffic.
5. Pedestrian traffic signal display controlling closed crosswalks shall be covered or deactivated.
6. Post Mounted Signs located near or adjacent to a sidewalk shall have a 7' minimum clearance from the bottom of sign to the sidewalk.
7. When construction activities involve sidewalks on both sides of the street, efforts should be made to keep the construction so that both sidewalks are not out of service at the same time.
8. In the event, the sidewalks on both sides of the street are closed, pedestrian shall be guided around the construction zone.
9. Temporary walkways shall be a minimum of 4' wide with a maximum 0.02 cross slope and a maximum side sloping slope between 1:10 and 1:12. Temporary walkways to exceed 200' Temporary ramps shall meet the requirements for curb ramps specified in rules No. 304. Temporary walkway surfaces and ramps shall be free of any obstructions, and kept free of any obstructions and hazards such as holes, debris, oils, construction equipment, stored materials, etc.
10. Temporary ramps and temporary crosswalk markings shall be removed with respect to the sidewalk, unless otherwise noted in the plans. All work and materials associated with constructing temporary curb ramps and temporary crosswalk markings, removal and disposal of temporary curb ramps and temporary crosswalk markings, storage, and restoration to original condition shall be paid for as indicated on 16147, Temp Sign.
11. A pedestrian longitudinal channelizing device shall be placed across the full width of the closed sidewalk.

CONDITIONS

REMOVE ALL VEHICLE EQUIPMENT WORKING ON THE SIDEWALK FOR A PERIOD OF MORE THAN 60 MINUTES.

4/16/2015 11:36:22 AM

SYMBOLS

- Channelizing Device (See Index No. 600)
- Work Area
- Work Zone Sign
- Required Locations for either Temporary or Permanent Curb Bumps.
- Lane Identification & Direction of Traffic
- Pedestrian Longitudinal Channelizing Device

LIST	REVISION	DESCRIPTION:
07/10/13		

FDOT DESIGN STANDARDS 2015	PEDESTRIAN CONTROL FOR CLOSURE OF SIDEWALKS
-----------------------------------	---

INDEX NO.	SHEET NO.
660	1 OF 1



FIBER OPTIC CABLE INSTALLATION

DATE	DESCRIPTION	INITIAL
08/20/15	ORIGINAL SUBMITTAL	CHI



PROJECT NO.	20 DANLEY DR. - 888394
DATE	MAY 2015

ElectriCom

DATE: 9-28-15
 CREW / SUBCONTRACTOR: Ant Underground Inc.
 LOCATOR: Digitracker

CUSTOMER: Lee County ITG
 JOB NAME: Medical Examiner/Environmental
 BEGIN STATION: _____
 END STATION: _____
 COUNT AND SIZE CONDUIT: (3) 1.25" Conduit.

ROD #	PITCH +/-	DEPTH	DISTANCE EOP
1	-30	3.6	
2	-32	4.2	
3	-31	4.3	
4	-31	5.0	
5	-28	5.4	
6	-26	6.0	
7	-20	6.6	
8	-15	7.2	
9	-10	8	
10	-4	8.3	
11	-1	8.4	
12	+0	8.3	
13	+1	8.1	
14	+2	8.4	
15	+1	8.0	
16	+4	7.8	
17	+3	7.1	
18	+0	8.1	
19	+1	8.4	
20	+0	8.6	
21	+4	8.2	
22	+5	7.4	
23	+5	7.0	
24	+10	6.1	
25	+12	5.6	
26	+4	5.0	
27	+2	5.1	
28	+0	5.0	
29	+1	4.8	
30	+0	4.5	
31	+2	4.0	
32	+3	4.6	
33	+1	4.1	
φ			

ROD #	PITCH +/-	DEPTH	DISTANCE EOP
34	+0	3.8	
35	+0	3.6	
36	+1	4.2	
37	+0	4.1	
38	+2	3.8	
39	+0	3.6	
40	+0	3.6	
1	-20	3.6	
2	-10	4.0	
3	-4	4.2	
4	+2	4.0	
5	+0	4.5	
6	+1	3.8	
7	-2	4.6	
8	+1	4.2	
9	+0	3.6	

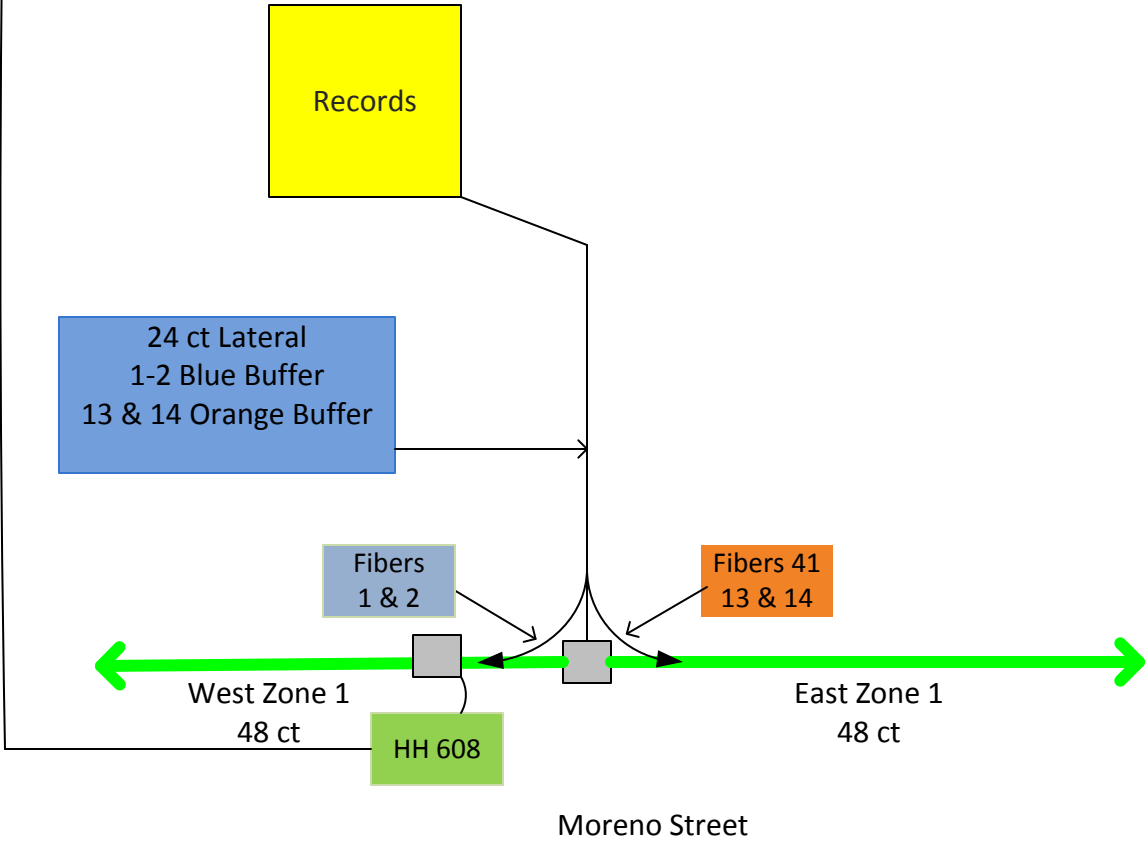
SUBCONTRACTOR REPRESENTATIVE:		ElectriCom REPRESENTATIVE:	COMPLETED WORK
SIGNATURE:		SIGNATURE:	
PRINT NAME:		PRINT NAME:	

By signing, I have verified that the quantities are accurate.

Records Cisco Splice Details

Please splice the fiber 24 ct lateral into the 48 ct zone 1 as follows:

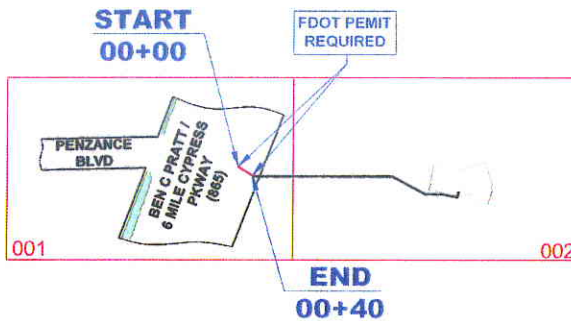
Splice fibers 1-2 of the 24 ct Blue Buffer (Blue Orange) to Existing Zone (1) 48 ct blue buffer pairs 11 & 12 (Rose Aqua) tagged 19170 feet lower footage West . HH608 . Splice 13 & 14 of the 24 count lateral Orange Buffer (Blue Orange) to Existing Zone (1) 48 ct tagged 19170 feet blue buffer pairs 11 & 12 to (Rose Aqua) to East HH608.



**CONDUIT
FEED TO
SIX MILE CYPRESS SLOUGH
7791 PENZANCE BLVD.
FORT MYERS, FL 33912**



LOCATION MAP



OVERALL VIEW

REGISTERED PROFESSIONAL ENGINEER



ElectriCom
All our right connections.

INDEX OF SHEETS

SHEET N°	DESCRIPTION
COVER	
001 OF 002 TO 002 OF 002	PLANS
01A OF 002 TO 01A OF 002	PROFILE
NOTES	011-000

F.O.C. FOOTAGE (THIS SHEET)

FIBER COUNT	CITY FOOTAGE
# BLACK (100)	-
# BLACK (50)	-
# BLACK (25)	-
UNDERGROUND	-
TRENCH	-
INSIDE BUILDING	-
ATTACHMENT	-
TOTAL FOC FOOTAGE	-

CONDUIT FOOTAGE (THIS SHEET)

TYPE OF JOB	INITIAL	12CT
TRENCH	1-P CONDUIT	40
TRENCH AND BENCH	-	-
STRUCTURAL BORE	-	-
BRIDGE ATTACHMENT	-	-
EASEMENT CONDUIT	-	-
BORE HOLE	-	-
TOTAL CONDUIT FOOTAGE		40

FOR PERMIT

PROJECT NAME	SIX MILE CYPRESS SLOUGH
PROJECT NUMBER	7791 PENZANCE BLVD
DESIGNER	LOUVO PUNTE (239) 905 2824
PROJECT CODE	-----
DESIGNER'S FIRM	ElectriCom Inc.
DATE	7791 PENZANCE BLVD - DESIGN
SCALE	N.T.S.
PROJECT NUMBER	POWER 001
SHEET NUMBER	001

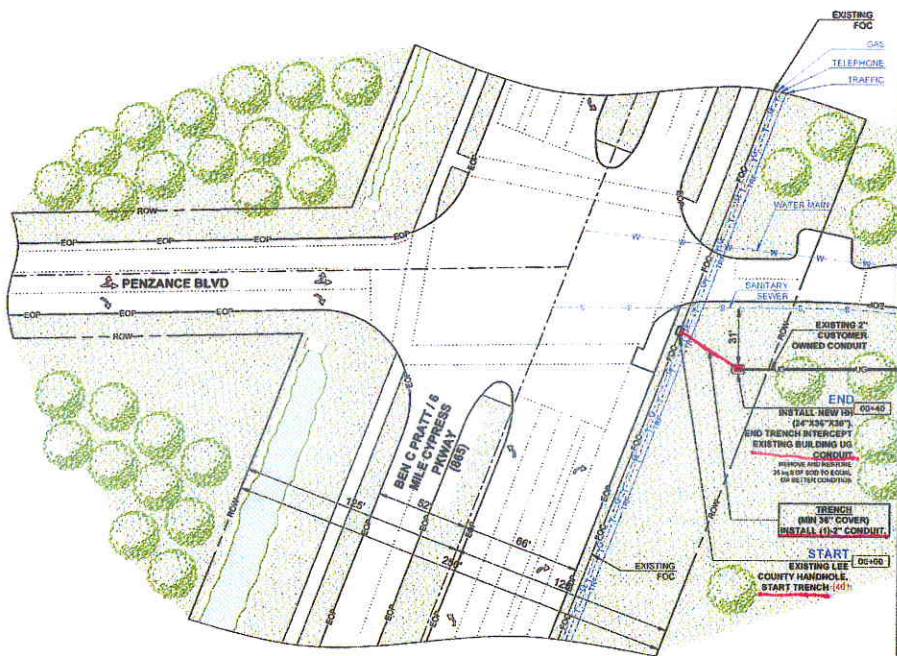


FIBER OPTIC CABLE INSTALLATION

REVISIONS			
DATE	DESCRIPTION	INITIAL	
06/02/2015	ORIGINAL SUBMITTAL	EP	



SEE SHEET: 002 OF 002



MATCH LINE STATION:



CONSTRUCTION NOTES:

- ALL DAMAGED SURFACES ARE TO BE RESTORED TO PREVIOUS CONDITION OR BETTER.
- ALL MEASUREMENTS AND DISTANCES ARE TO BE VERIFIED ON FIELD.
- MINIMUM 12" SEPARATION IS TO BE MAINTAINED BETWEEN EXISTING UTILITY AND NEW CONDUIT.
- MINIMUM 8' RADIUS IS TO BE MAINTAINED ON ALL CONDUIT BENDS.

F.O.C. FOOTAGE (THIS SHEET)

FIBER COLOR	QTY	FOOTAGE
# BLACK (100)	-	-
# BLACK (50)	-	-
# BLACK (25)	-	-
UNDERGROUND	-	-
AERIAL	-	-
IN-SIDE BUILDING	-	-
ATTACHMENT	-	-
TOTAL FOC FOOTAGE	-	-

CONDUIT FOOTAGE (THIS SHEET)

TYPE OF JOB	INSTALL	100'
TRENCH	1-1/2" CONDUIT	40'
TRENCH (W/NO DIGGING)	-	-
DIRECTIONAL BORE	-	-
BRIDGE ATTACHMENT	-	-
EXISTING IN CONDUIT	-	-
BURIED	-	-
TOTAL CONDUIT FOOTAGE	-	40'

FOR PERMIT

PROJECT NAME: SIX MILE CYPRESS SLOUGH
 PROJECT ADDRESS: 2781 PENZANCE BLVD
 OFFICE: 11000 PLANTATION
 PROJECT CODE: 2018-0001
 DATE: 08/07/2015
 SCALE: 1"=50'

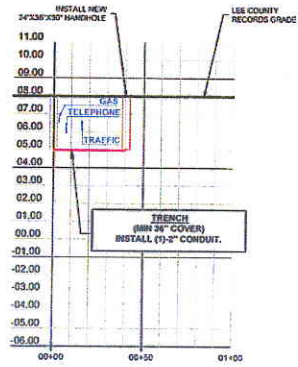


FIBER OPTIC CABLE INSTALLATION

REVISIONS		
DATE	DESCRIPTION	INITIAL
08/07/2015	ORIGINAL SUBMITTAL	EM



"UNKNOWN ELEVATION"
NO ELEVATION RECORDS AVAILABLE,
CONTRACTOR SHALL VERIFY DEPTH
BEFORE BORING



PROFILE - 6 MILE CYPRESS PKWAY
HORIZONTAL SCALE 1"=50'
VERTICAL SCALE 1"=5'

DIRECTION OF
ENGINEERING

In collaboration with
ElectriCom
All the right connections.

FOR PERMIT



FIBER OPTIC CABLE INSTALLATION

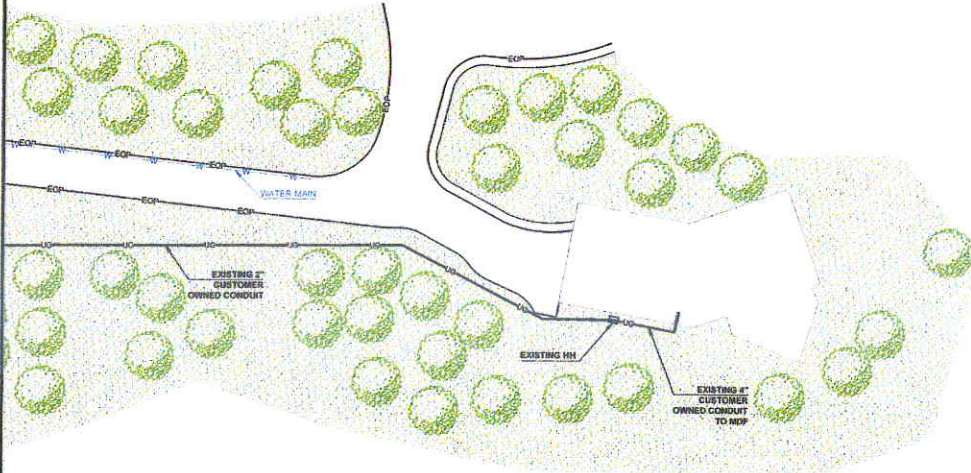
REVISIONS		
DATE	DESCRIPTION	INITIAL
08/07/2015	ORIGINAL SUBMITTAL	EDW



PROJECT ADDRESS: SIX MILE CYPRESS SLOUGH
7791 PENANCE BLVD
OFFICE: LLOYD PARENTI (239) 889-2824
PROJECT CODE: ---
DESIGNER: DraftPro Inc.
FILE NAME: 7791 PENANCE BLVD - DESIGN
SCALE: 1"=50' SHEET: 01A OF 002

SEE SHEET: 001 OF 002

MATCH LINE STATION



DIRECTION OF ENGINEERING

CONSTRUCTION BY THE CONTRACTOR IS REQUIRED FOR ALL WORK. THE CONTRACTOR SHALL BE RESPONSIBLE FOR OBTAINING ALL NECESSARY PERMITS AND APPROVALS FROM ALL AFFECTED AGENCIES. THE CONTRACTOR SHALL MAINTAIN ALL EXISTING UTILITIES AND STRUCTURES UNLESS OTHERWISE SPECIFIED BY THE CONTRACT DOCUMENTS.

In collaboration with:

ElectriCom
All the right connections.

CONSTRUCTION NOTES:

- ALL DAMAGED SURFACES ARE TO BE RESTORED TO PREVIOUS CONDITION OR BETTER.
- ALL MEASUREMENTS AND DISTANCES ARE TO BE VERIFIED ON FIELD.
- MINIMUM 12" SEPARATION IS TO BE MAINTAINED BETWEEN EXISTING UTILITY AND NEW CONDUIT.
- MINIMUM 6" RADIUS IS TO BE MAINTAINED ON ALL CONDUIT BENDINGS.

F.O.C. FOOTAGE (THIS SHEET)

FIBER COUNTRY	FOOTAGE	TOTAL
# BLACK (100)	-	-
# BLACK (65)	-	-
# BLACK (50)	-	-
UNDERGROUND	-	-
AERIAL	-	-
WIRELESS BUILDING	-	-
ATTACHMENT	-	-
TOTAL FOC FOOTAGE		

CONDUIT FOOTAGE (THIS SHEET)

TYPE OF JOB	INSTALL	132CT
BRANCH	-	-
BRANCH HAND UNDERGROUND	-	-
INSPECTION POINT	-	-
STEEL ATTACHMENT	-	-
EXISTING UG CONDUIT	-	-
BARE FOC	-	-
TOTAL CONDUIT FOOTAGE		

FOR PERMIT

PROJECT INFO:
PROJECT ADDRESS: SIX MILE CYPRESS SLOUGH
OFFENSE: 7791 PENALANCE BLVD
PROJECT CODE: 11000 PURVIEW (2025) 800 2025
DESIGNER: DrefPro Inc.
DATE: 7/27/2015
SCALE: 1"=50'

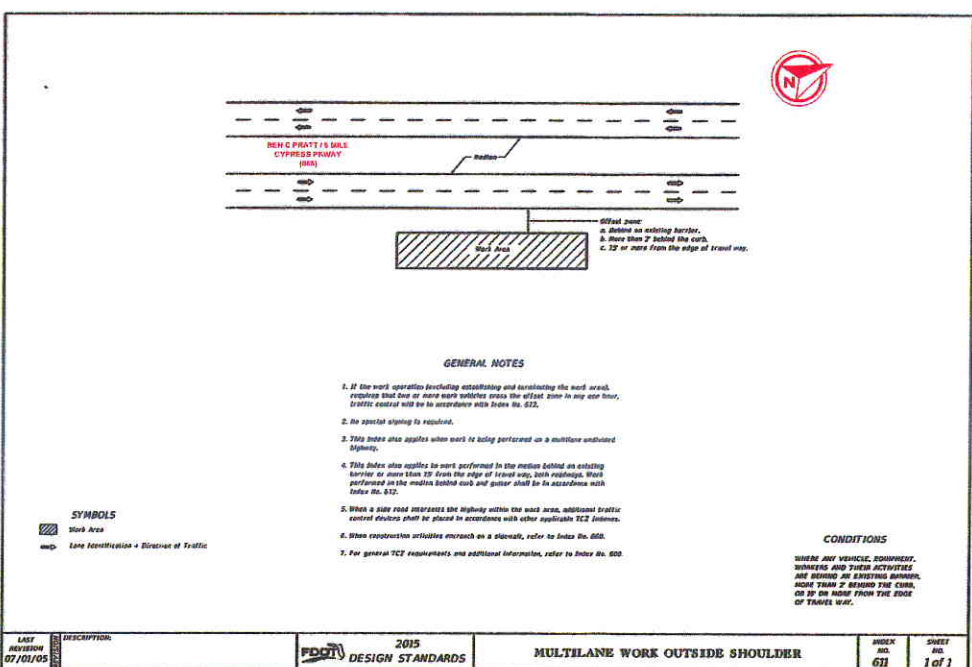


FIBER OPTIC CABLE INSTALLATION

REVISIONS			
DATE	DESCRIPTION	INITIAL	
06/07/2015	ORIGINAL SUBMITTAL	DPY	



811 Call before you dig



LAST REVISION 07/01/05	DESCRIPTION	2015 FDOT DESIGN STANDARDS	MULTILANE WORK OUTSIDE SHOULDER	INDEX NO. 611	SHEET NO. 1 of 1
---------------------------	-------------	-------------------------------	---------------------------------	------------------	---------------------

611

PROJECT: SIX MILE CYPRESS SLOUGH

7791 FENZANCE BLVD

LEOYI PLUMITE (250) 690 2621

811

7791 FENZANCE BLVD - DESIGN

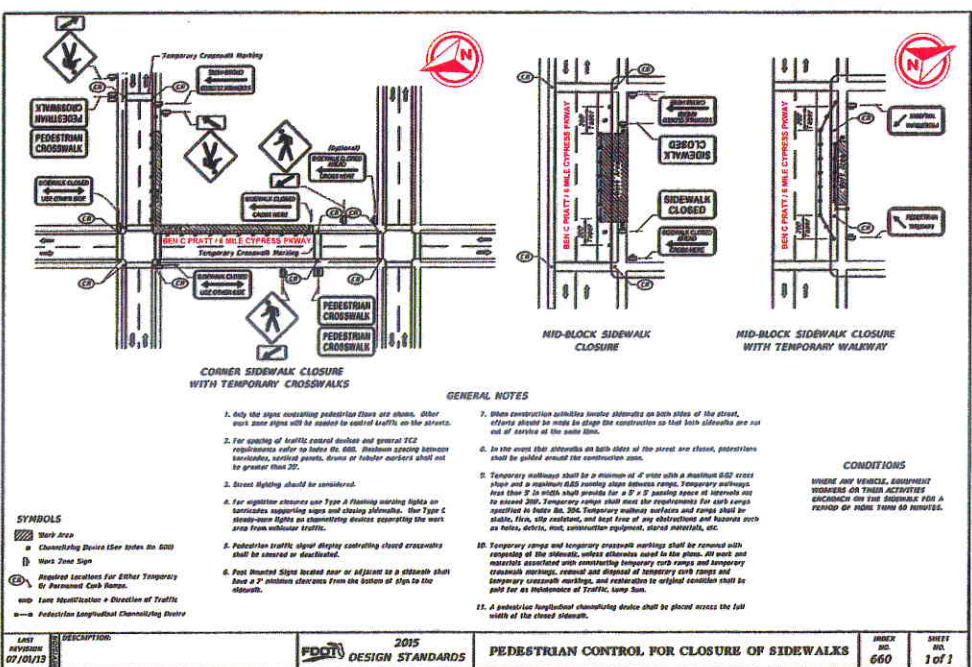
M.T.S. PRICE MOT 611



FIBER OPTIC CABLE INSTALLATION

REVISIONS		
DATE	DESCRIPTION	INITIAL
08/07/2015	ORIGINAL SUBMITTAL	CPH





LAST REVISION: 07/10/13	DESCRIPTION:	2015 DESIGN STANDARDS	PEDESTRIAN CONTROL FOR CLOSURE OF SIDEWALKS	INDEX NO: 660	SHEET NO: 1 of 1
-------------------------	--------------	-----------------------	---	---------------	------------------

660	
PROJECT NO:	SIX MILE CYPRESS SLOUGH
PROJECT ADDRESS:	7751 PENZANCE BLVD
DESIGNER:	LOUYS PUENTE
PROJECT CODE:	LECO PROJ 2024
DATE:	07/10/13
SCALE:	N.T.S.



FIBER OPTIC CABLE INSTALLATION

REVISIONS		
DATE	DESCRIPTION	INITIAL
08/07/2013	ORIGINAL SUBMITTAL	CPJ



PROJECT NO:	7751 PENZANCE BLVD
PROJECT ADDRESS:	LOUYS PUENTE
PROJECT CODE:	LECO PROJ 2024
DATE:	07/10/13
SCALE:	N.T.S.