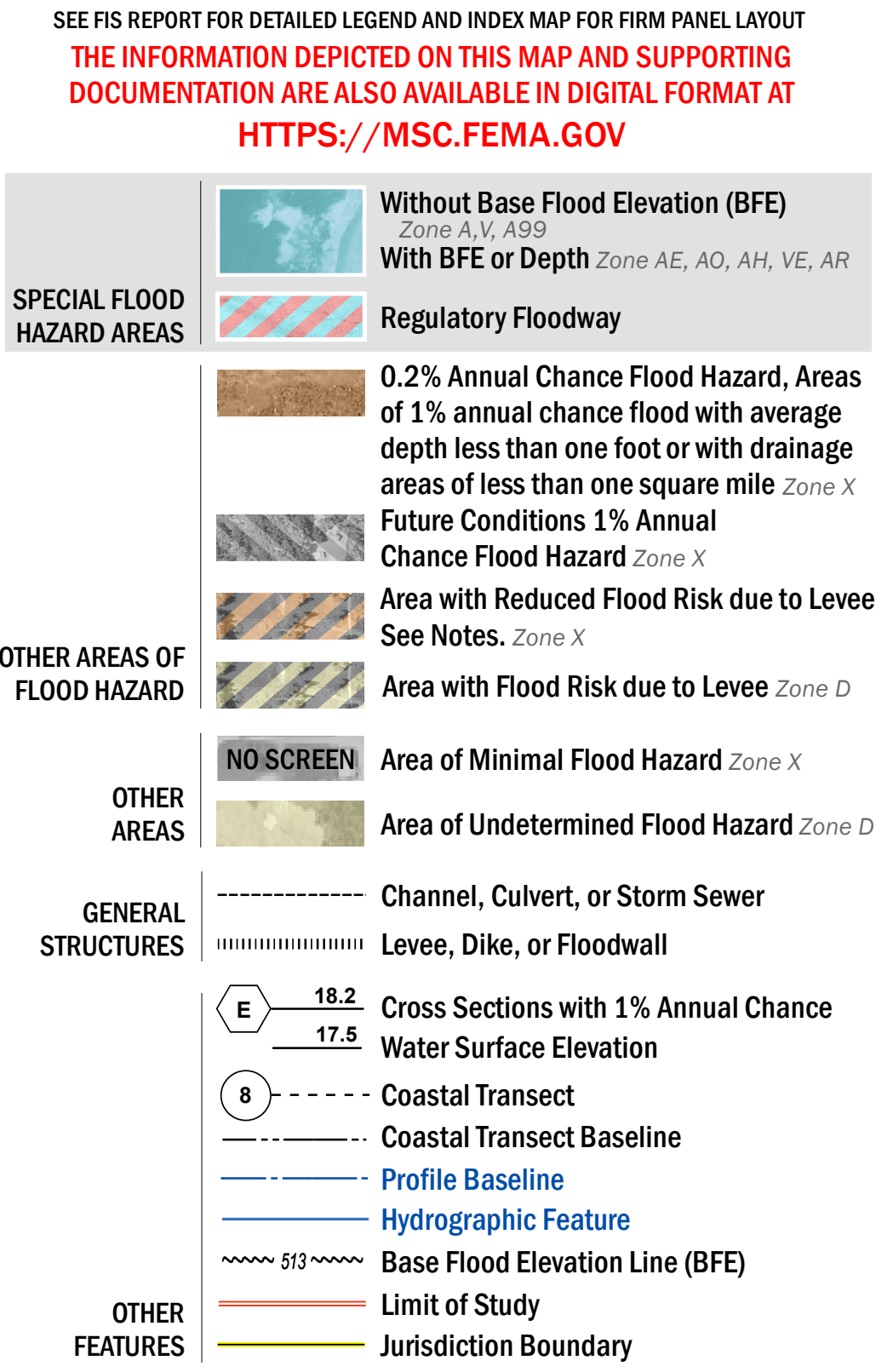


FLOOD HAZARD INFORMATION



NOTES TO USERS

For information and questions about this Flood Insurance Rate Map (FIRM), available products associated with this FIRM, including historic versions, the current map date for each FIRM panel, how to order products, or the National Flood Insurance Program (NFIP) in general, please call the FEMA Map Information Exchange at 1-877-FEMA-MAP (1-877-336-2627) or visit the FEMA Flood Map Service Center website at <https://msc.fema.gov>. Available products may include previously issued Letters of Map Change, a Flood Insurance Study Report, and/or digital versions of this map. Many of these products can be ordered or obtained directly from the website.

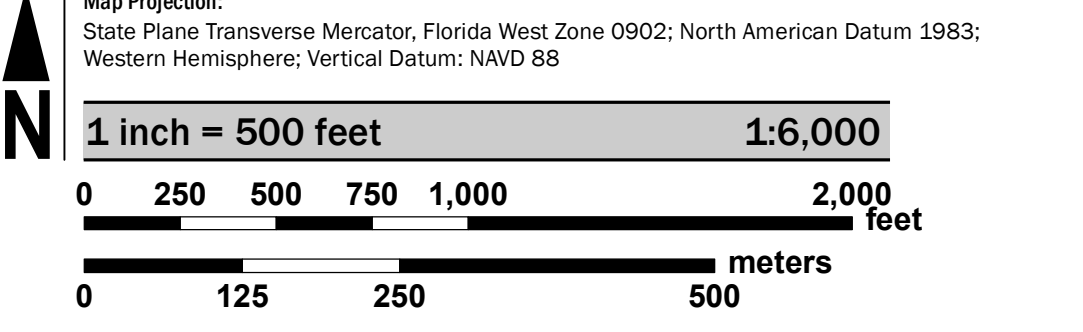
Communities annexing land on adjacent FIRM panels must obtain a current copy of the adjacent panel as well as the current FIRM Index. These may be ordered directly from the Flood Map Service Center at the number listed above.

For community and countywide map dates refer to the Flood Insurance Study Report for this jurisdiction.

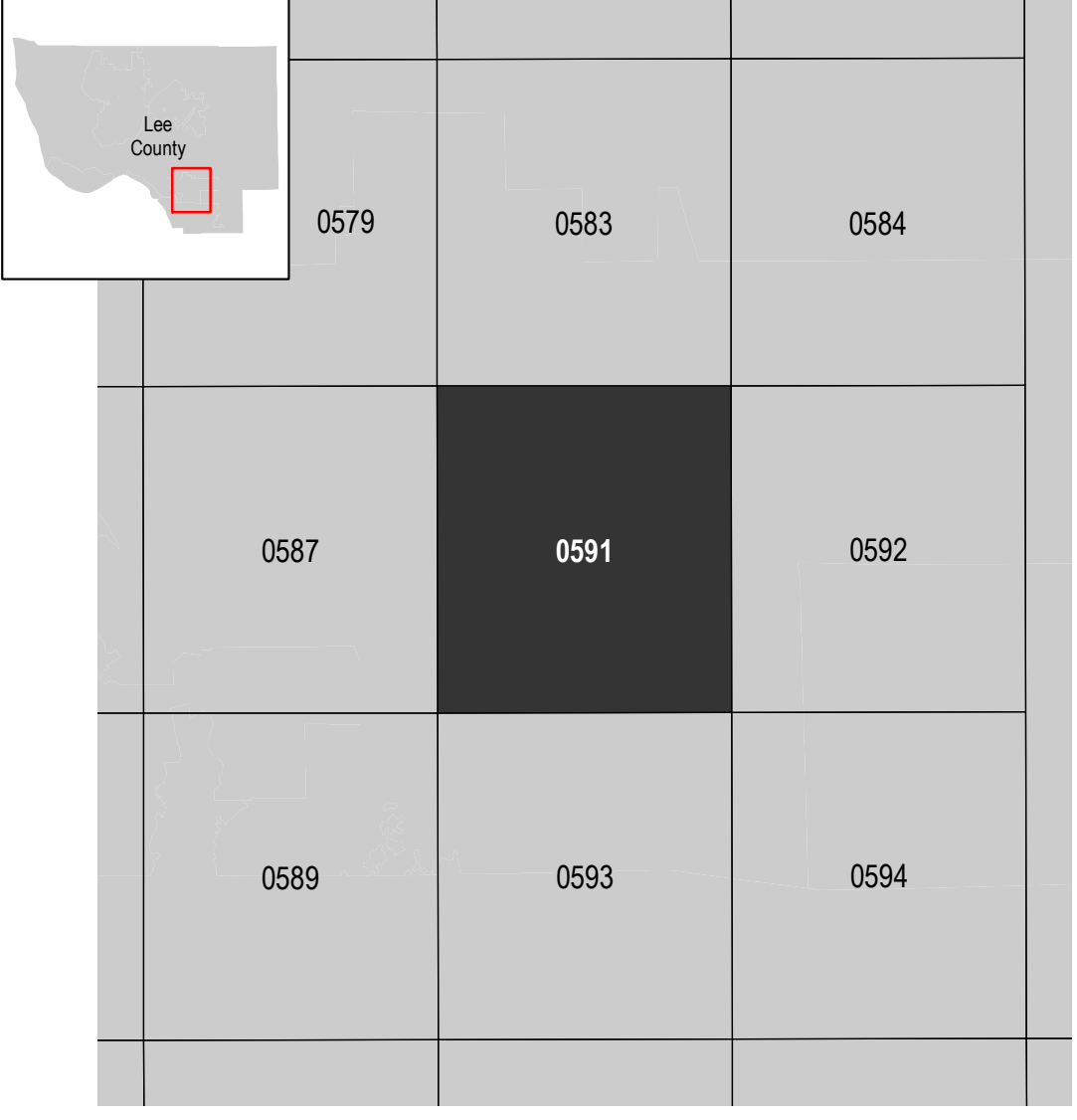
To determine if flood insurance is available in this community, contact your insurance agent or call the National Flood Insurance Program at 1-800-638-6620.

Base map information shown on this FIRM was provided by Lee County, dated 2008 and 2018; the Florida Department of Transportation, dated 2017 and 2018; the U.S. Department of Agriculture, dated 2018; and the U.S. Department of Transportation, dated 2017.

SCALE



PANEL LOCATOR



**National Flood Insurance Program**

**NATIONAL FLOOD INSURANCE PROGRAM**  
FLOOD INSURANCE RATE MAP

LEE COUNTY, FLORIDA  
and Incorporated Areas

PANEL 591 of 685

Panel Contains:  
COMMUNITY  
ESTERO, VILLAGE OF

NUMBER PANEL SUFFIX  
120260 0591 H

**REVISED  
PRELIMINARY  
2/11/2022**

VERSION NUMBER  
2.4.3.5

MAP NUMBER  
12071C0591H

MAP REVISED