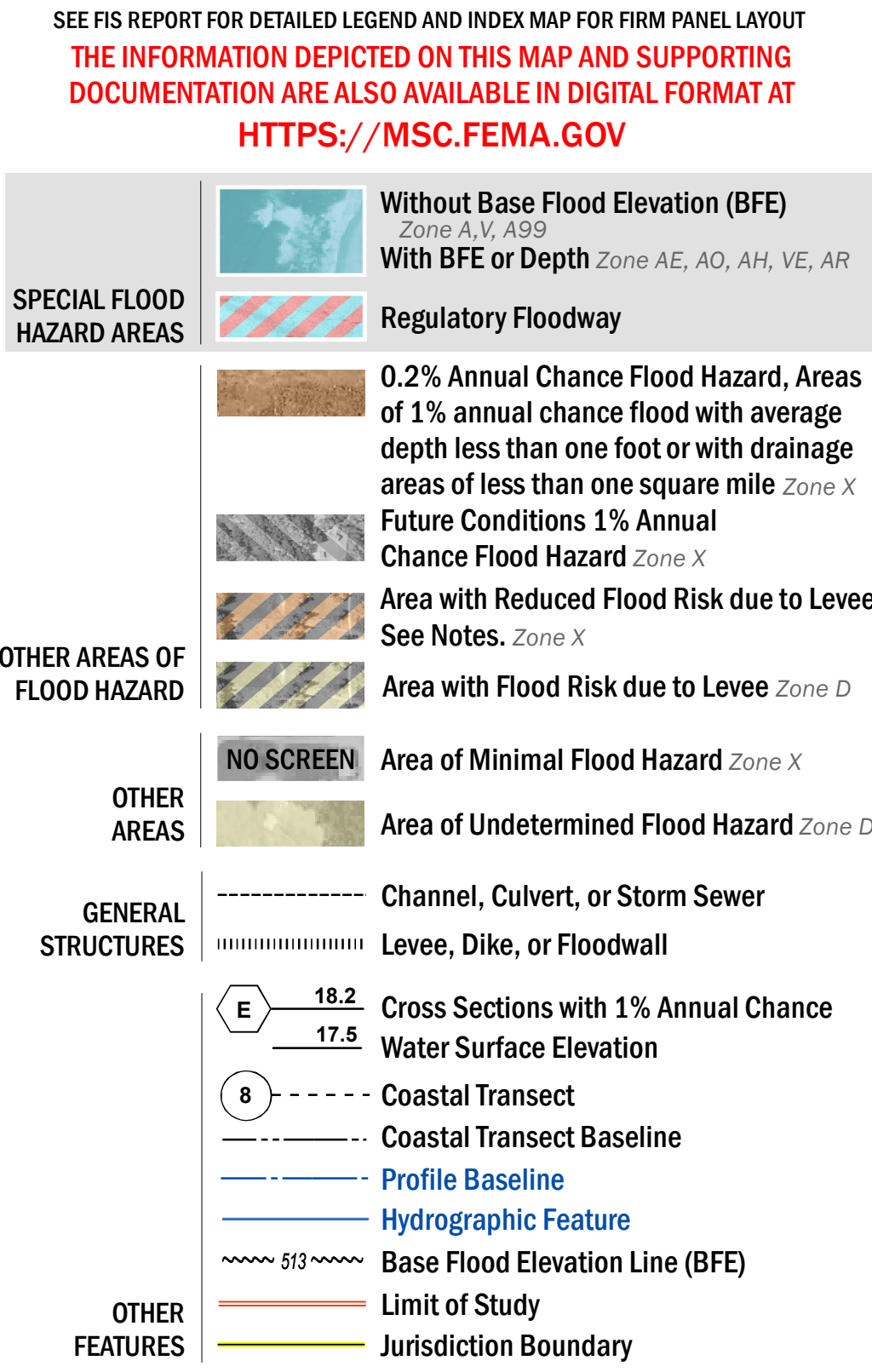




FLOOD HAZARD INFORMATION



NOTES TO USERS

For information and questions about this Flood Insurance Rate Map (FIRM), available products associated with this FIRM, including historic versions, the current map date for each FIRM panel, how to order products, or the National Flood Insurance Program (NFIP) in general, please call the FEMA Map Information eXchange at 1-877-FEMA-MAP (1-877-336-2627) or visit the FEMA Flood Map Service Center website at <https://msc.fema.gov>. Available products may include previously issued Letters of Map Change, a Flood Insurance Study Report, and/or digital versions of this map. Many of these products can be ordered or obtained directly from the website.

Communities annexing land on adjacent FIRM panels must obtain a current copy of the adjacent panel as well as the current FIRM Index. These may be ordered directly from the Flood Map Service Center at the number listed above.

For community and countywide map dates refer to the Flood Insurance Study Report for this jurisdiction.

To determine if flood insurance is available in this community, contact your insurance agent or call the National Flood Insurance Program at 1-800-638-6620.

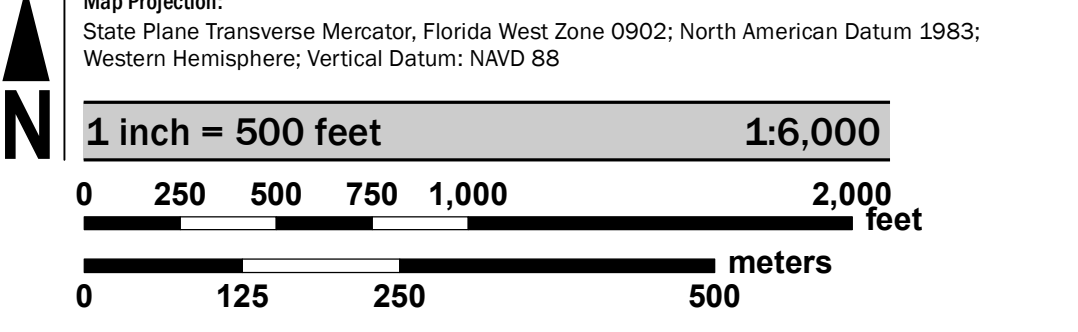
Base map information shown on this FIRM was provided by Lee County, dated 2008 and 2018; the Florida Department of Transportation, dated 2017 and 2018; the U.S. Department of Agriculture, dated 2018; and the U.S. Department of Transportation, dated 2017.

LIMIT OF MODERATE WAVE ACTION: Zone AE has been divided by a Limit of Moderate Wave Action (LIMWA). The LIMWA represents the approximate landward limit of the 1.5-foot breaking wave. The effects of wave hazards between Zone VE and the LIMWA (or between the shoreline and the LIMWA for areas where Zone VE is not identified) will be similar to, but less severe than, those in the Zone VE.

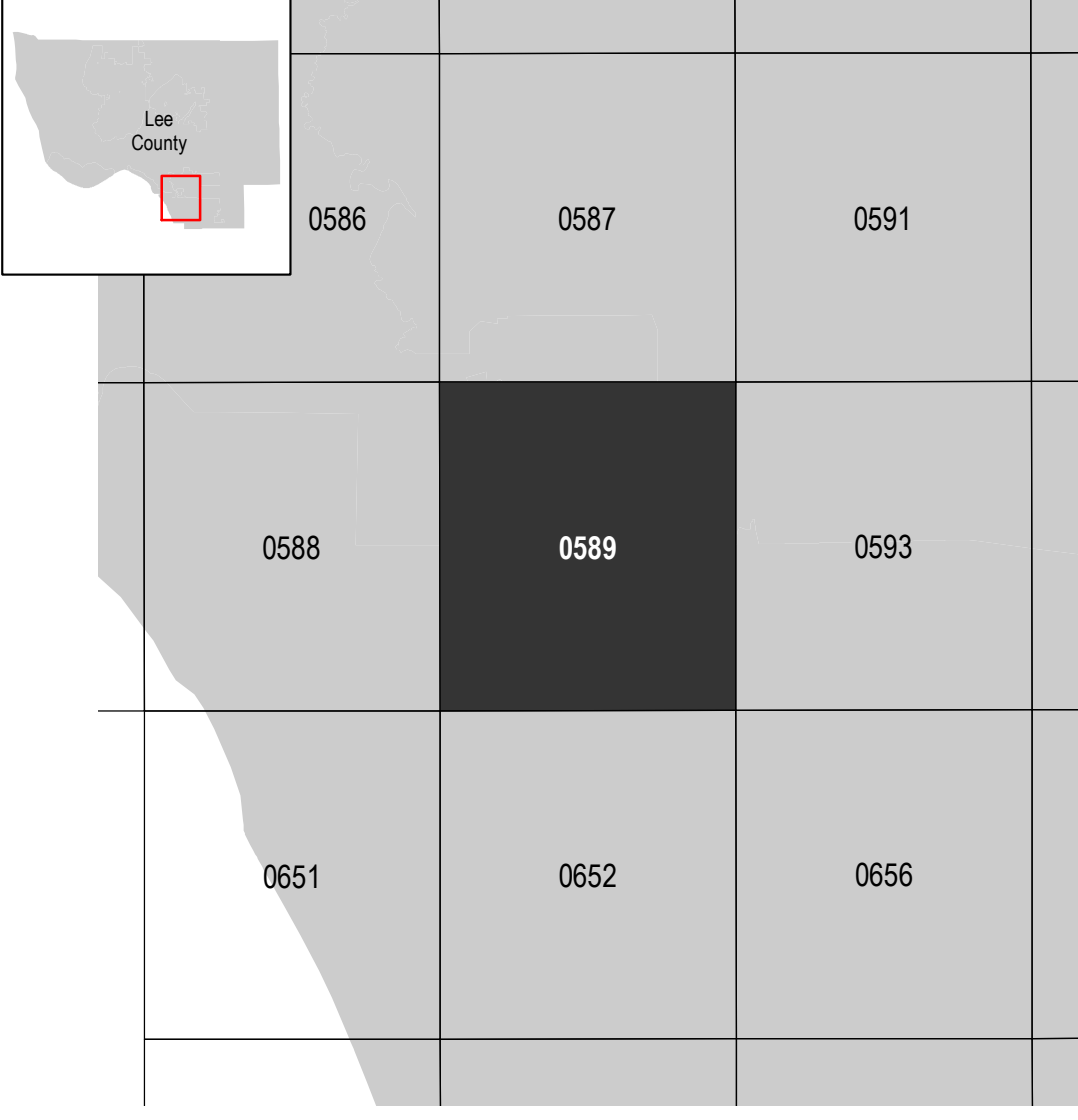
Limit of Moderate Wave Action (LIMWA)

Coastal Barrier Resources System (CBRS) areas and "otherwise protected areas" (OPAs) are no longer shown on this map panel, but still may be present in this community. Current information on these areas is provided by the U.S. Fish & Wildlife Service (FWS). NFIP flood insurance is not available within CBRS areas for structures that are built or substantially improved on or after the dates indicated by FWS. Users should reference the most up-to-date information provided by FWS to determine NFIP insurance eligibility. The official maps and additional information regarding CBRS areas are provided on the FWS website at: [www.fws.gov/cbra](http://www.fws.gov/cbra). FEMA also includes the official boundaries from FWS on our interactive and dynamic flood maps available through the FEMA Map Service Center.

SCALE



PANEL LOCATOR



National Flood Insurance Program

**NATIONAL FLOOD INSURANCE PROGRAM**  
FLOOD INSURANCE RATE MAP

LEE COUNTY, FLORIDA  
and Incorporated Areas

PANEL 589 of 685

Panel Contains:  
COMMUNITY  
BONITA SPRINGS, CITY OF  
ESTERO, VILLAGE OF  
LEE COUNTY

NUMBER	PANEL	SUFFIX
120680	0589	G
120260	0589	G
125124	0589	G

**PRELIMINARY**  
6/28/2019

VERSION NUMBER  
2.4.3.5

MAP NUMBER  
12071C0589G

MAP REVISED