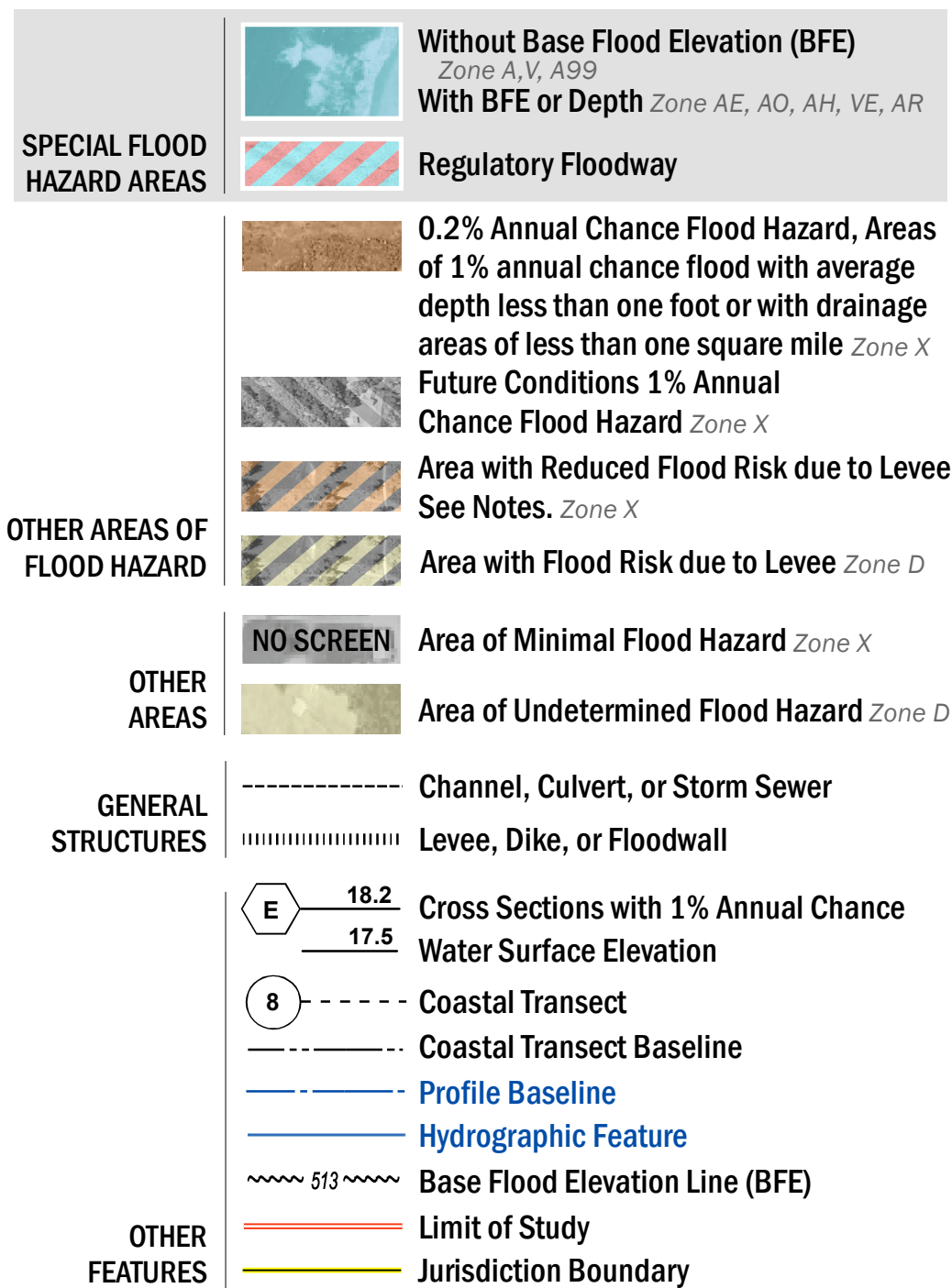


FLOOD HAZARD INFORMATION

SEE FIS REPORT FOR DETAILED LEGEND AND INDEX MAP FOR FIRM PANEL LAYOUT
THE INFORMATION DEPICTED ON THIS MAP AND SUPPORTING DOCUMENTATION ARE ALSO AVAILABLE IN DIGITAL FORMAT AT [HTTPS://MSC.FEMA.GOV](https://MSC.FEMA.GOV)



NOTES TO USERS

For information and questions about this Flood Insurance Rate Map (FIRM), available products associated with this FIRM, including historic versions, the current map date for each FIRM panel, how to order products, or the National Flood Insurance Program (NFIP) in general, please call the FEMA Map Information Exchange at 1-877-FEMA-MAP (1-877-338-2627) or visit the FEMA Flood Map Service Center website at <https://msc.fema.gov>. Available products may include previously issued Letters of Map Change, a Flood Insurance Study Report, and/or digital versions of this map. Many of these products can be ordered or obtained directly from the website.

Communities annexing land on adjacent FIRM panels must obtain a current copy of the adjacent panel as well as the current FIRM Index. These may be ordered directly from the Flood Map Service Center at the number listed above.

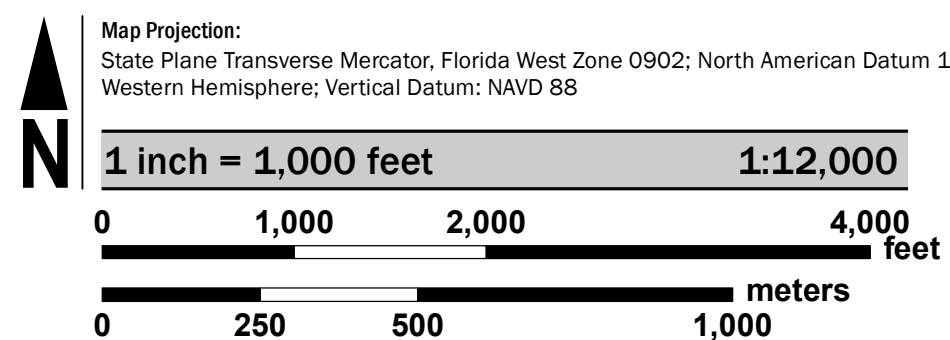
For community and countywide map dates refer to the Flood Insurance Study Report for this jurisdiction. To determine if flood insurance is available in this community, contact your insurance agent or call the National Flood Insurance Program at 1-800-638-6620.

Base map information shown on this FIRM was provided by Lee County, dated 2008 and 2018; the Florida Department of Transportation, dated 2017 and 2018; the U.S. Department of Agriculture, dated 2018; and the U.S. Department of Transportation, dated 2017.

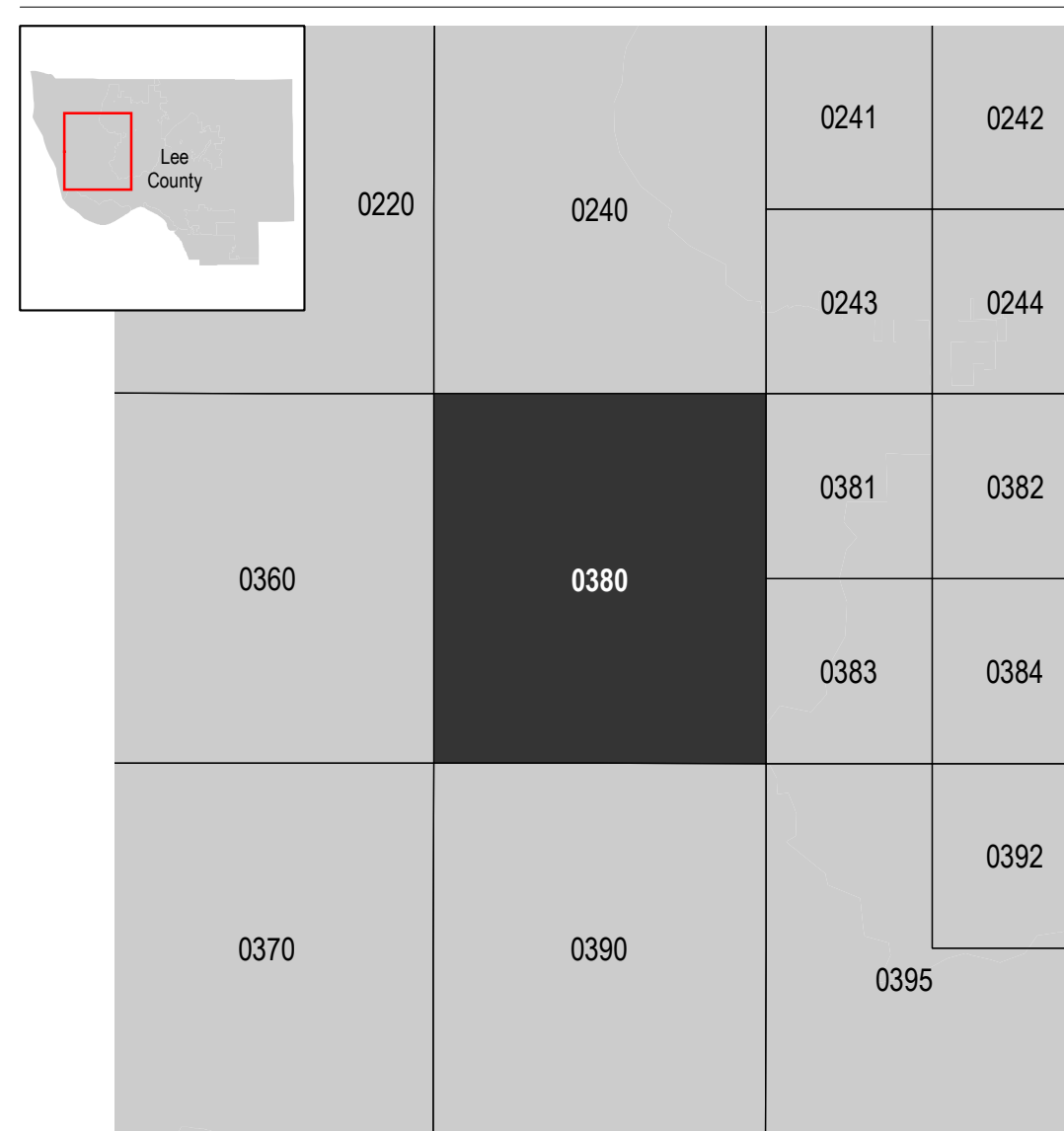
LIMIT OF MODERATE WAVE ACTION: Zone AE has been divided by a Limit of Moderate Wave Action (LMWA). The LMWA represents the approximate landward limit of the 1.5-foot breaking wave. The effects of wave hazards between Zone VE and the LMWA (or between the shoreline and the LMWA for areas where Zone VE is not identified) will be similar to, but less severe than, those in the Zone VE.

▲ Limit of Moderate Wave Action (LMWA)

SCALE



PANEL LOCATOR



**NATIONAL FLOOD INSURANCE PROGRAM
 FLOOD INSURANCE RATE MAP**

LEE COUNTY, FLORIDA
 and Incorporated Areas
 PANEL 380 OF 685

Panel Contains:
 COMMUNITY: CAPE CORAL, CITY OF LEE COUNTY
 NUMBER: 125095, 125124
 PANEL: 0380, 0380
 SUFFIX: G, G

**PRELIMINARY
 6/28/2019**

VERSION NUMBER: 2.4.3.5
 MAP NUMBER: 12071C0380G
 MAP REVISED