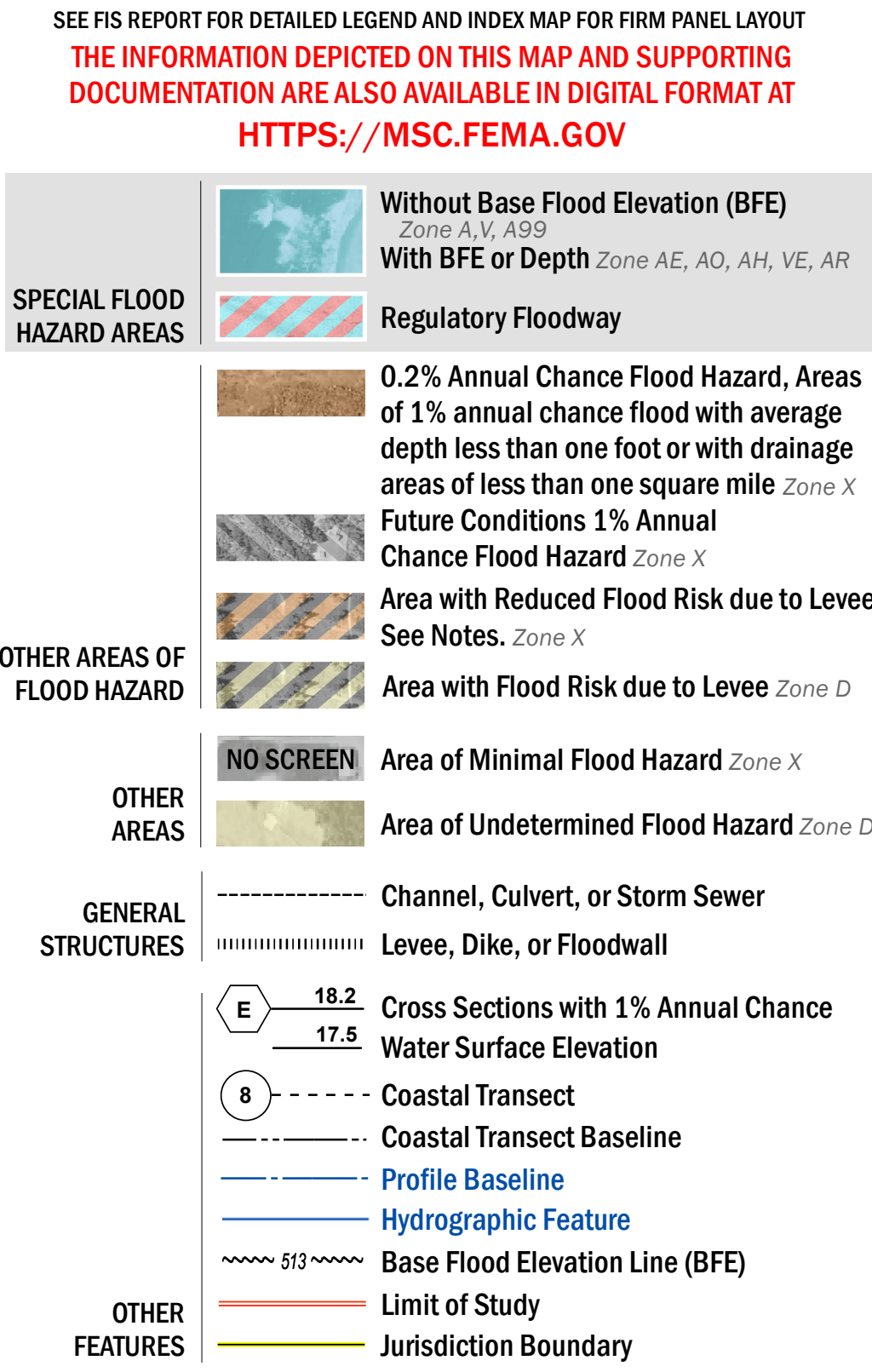


FLOOD HAZARD INFORMATION



NOTES TO USERS

For information and questions about this Flood Insurance Rate Map (FIRM), available products associated with this FIRM, including historic versions, the current map date for each FIRM panel, how to order products, or the National Flood Insurance Program (NFIP) in general, please call the FEMA Map Information eXchange at 1-877-FEMA-MAP (1-877-336-2627) or visit the FEMA Flood Map Service Center website at <https://msc.fema.gov>. Available products may include previously issued Letters of Map Change, a Flood Insurance Study Report, and/or digital versions of this map. Many of these products can be ordered or obtained directly from the website.

Communities annexing land on adjacent FIRM panels must obtain a current copy of the adjacent panel as well as the current FIRM Index. These may be ordered directly from the Flood Map Service Center at the number listed above.

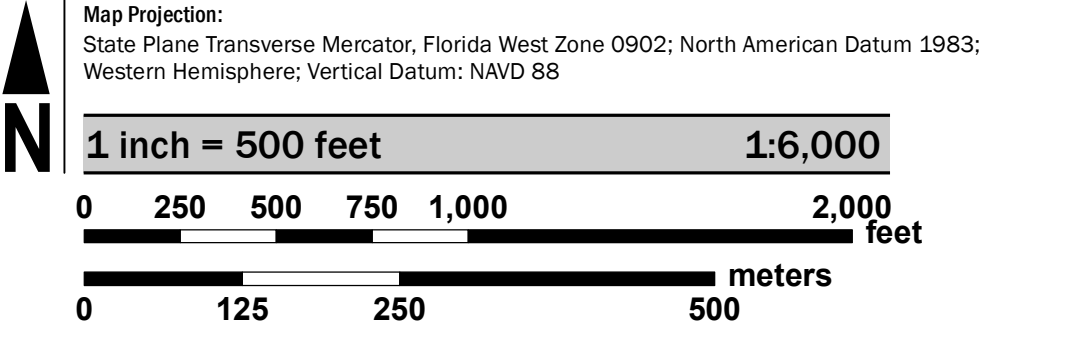
For community and countywide map dates refer to the Flood Insurance Study Report for this jurisdiction.

To determine if flood insurance is available in this community, contact your insurance agent or call the National Flood Insurance Program at 1-800-638-6620.

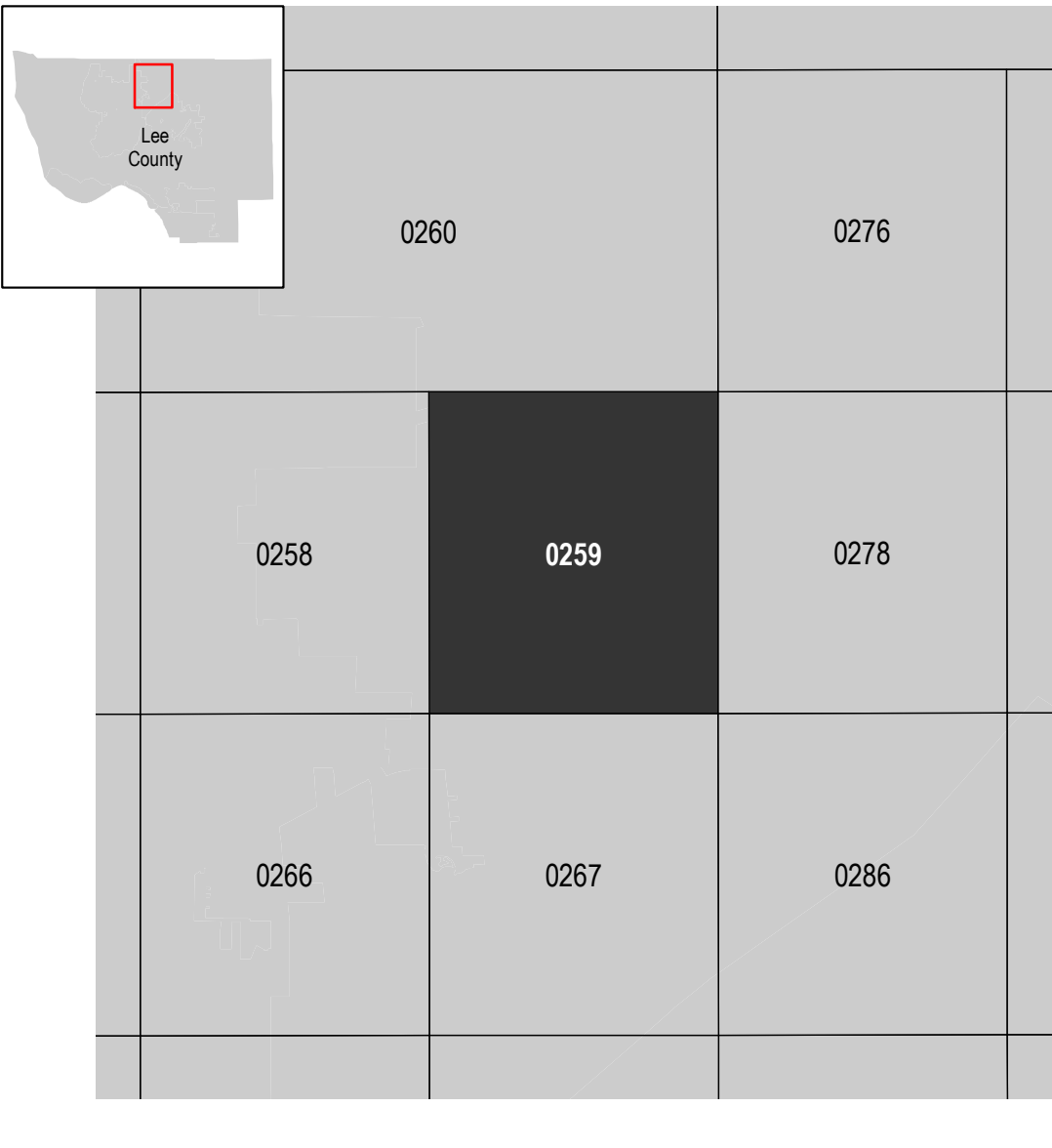
Base map information shown on this FIRM was provided by Lee County, dated 2008 and 2018; the Florida Department of Transportation, dated 2017 and 2018; the U.S. Department of Agriculture, dated 2018; and the U.S. Department of Transportation, dated 2017.

The map reflects more detailed and up-to-date stream channel configurations than those shown on the previous FIRM for this jurisdiction. The floodplains and floodways that were transferred from the previous FIRM may have been adjusted to conform to these new stream channel configurations. As a result, the Flood Profiles and FDTs may reflect stream channel distances that differ from what is shown on the map.

SCALE



PANEL LOCATOR



National Flood Insurance Program

NATIONAL FLOOD INSURANCE PROGRAM
FLOOD INSURANCE RATE MAP

LEE COUNTY, FLORIDA
and Incorporated Areas

PANEL 259 of 685

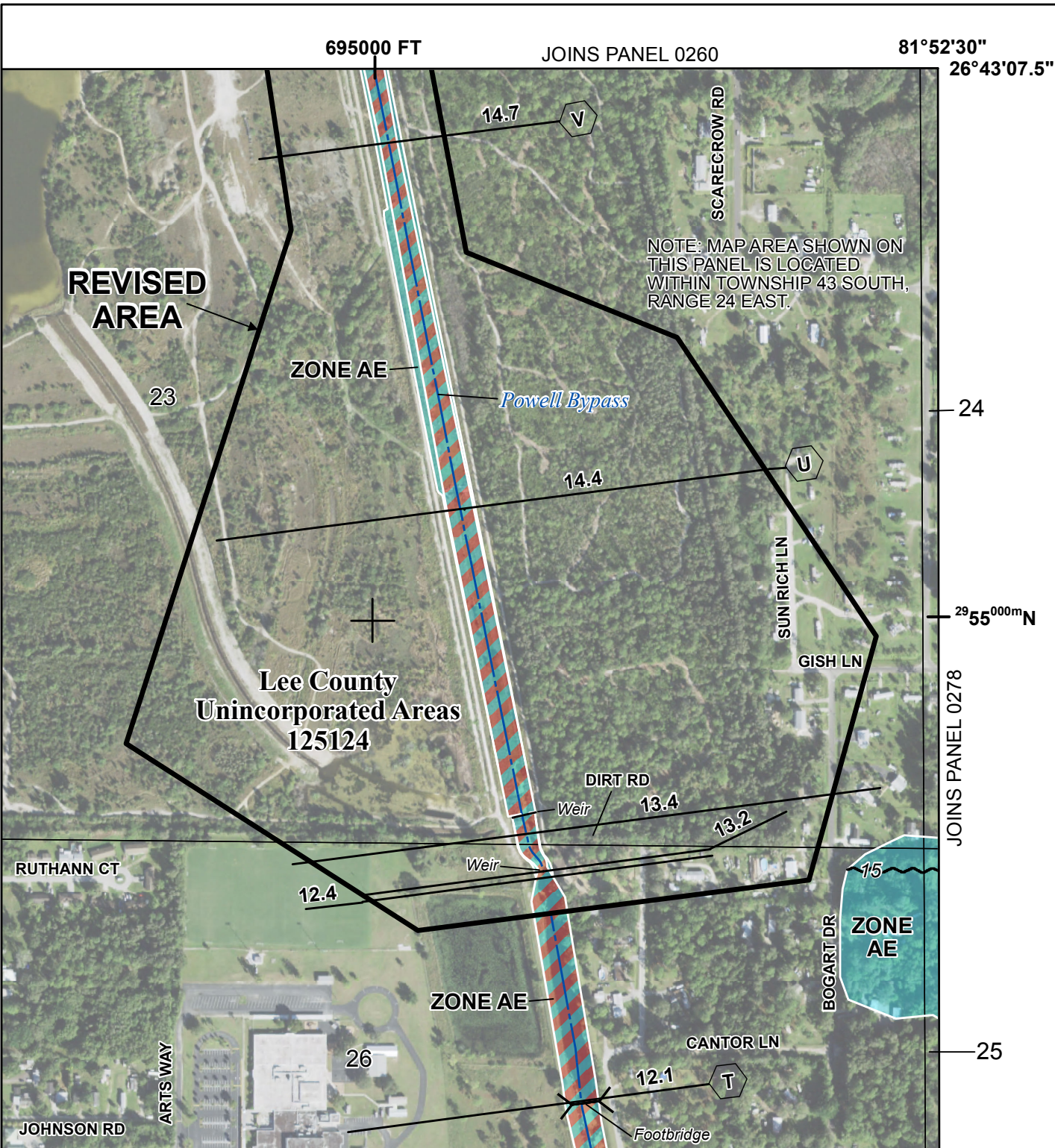
Panel Contains:
COMMUNITY
CAPE CORAL, CITY OF
LEE COUNTY

NUMBER	PANEL	SUFFIX
125095	0259	G
125124	0259	G

VERSION NUMBER
2.4.3.5

MAP NUMBER
12071C0259G

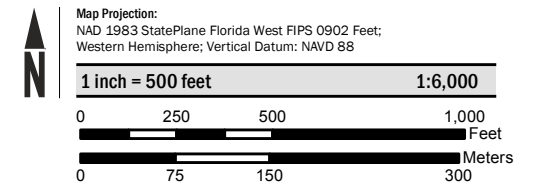
MAP REVISED
NOVEMBER 17, 2022



SPECIAL FLOOD HAZARD AREAS		Without Base Flood Elevation (BFE) Zone A, V, A99
		With BFE or Depth Zone AE, AO, AH, VE, AR
OTHER AREAS OF FLOOD HAZARD		Regulatory Floodway
		0.2% Annual Chance Flood Hazard, Areas of 1% annual chance flood with average depth less than one foot or with drainage areas of less than one square mile Zone X
		Future Conditions 1% Annual Chance Flood Hazard Zone X
		Area with Reduced Flood Risk due to Levee See Notes. Zone X

SCALE

NOTE: BASEMAP IMAGERY WAS OBTAINED FROM NAIP IN 2021.



FEMA
National Flood Insurance Program

NATIONAL FLOOD INSURANCE PROGRAM
FLOOD INSURANCE RATE MAP

LEE COUNTY, FLORIDA
and Incorporated Areas
PANEL 259 OF 685

Panel Contains:

COMMUNITY	NUMBER	PANEL	SUFFIX
CAPE CORAL, CITY OF	125095	0259	G
LEE COUNTY	125124	0259	G

REVISED TO REFLECT LOMR
EFFECTIVE: January 31, 2023

VERSION NUMBER
2.1.3.0
MAP NUMBER
12071C0259G
MAP REVISED
NOVEMBER 17, 2022