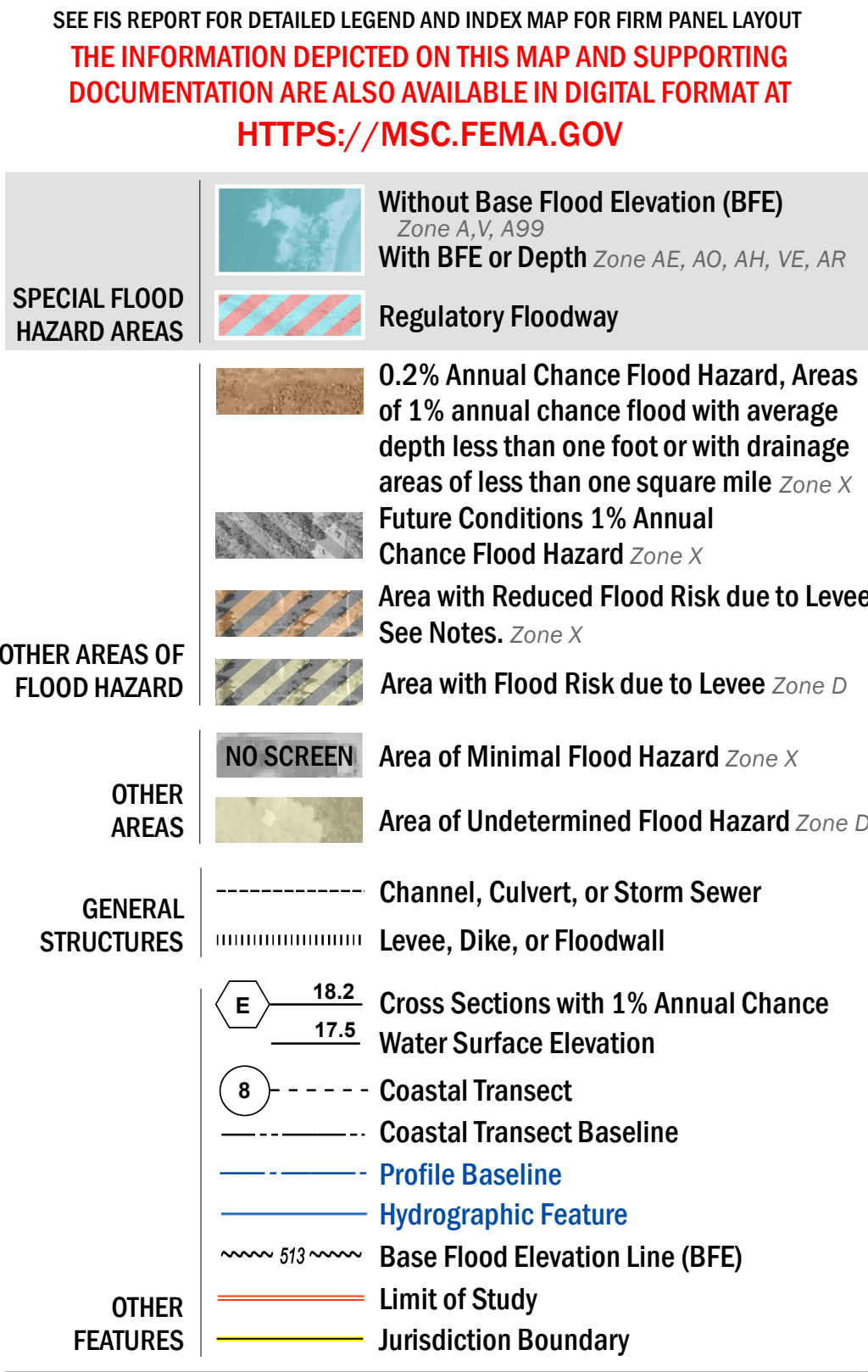


FLOOD HAZARD INFORMATION



NOTES TO USERS

For information and questions about this Flood Insurance Rate Map (FIRM), available products associated with this FIRM, including historic versions, the current map date for each FIRM panel, how to order products, or the National Flood Insurance Program (NFIP) in general, please call the FEMA Map Information eXchange at 1-877-FEMA-MAP (1-877-336-2627) or visit the FEMA Flood Map Service Center website at <https://msc.fema.gov>. Available products may include previously issued Letters of Map Change, a Flood Insurance Study Report, and/or digital versions of this map. Many of these products can be ordered or obtained directly from the website.

Communities annexing land on adjacent FIRM panels must obtain a current copy of the adjacent panel as well as the current FIRM Index. These may be ordered directly from the Flood Map Service Center at the number listed above.

For community and countywide map dates refer to the Flood Insurance Study Report for this jurisdiction.

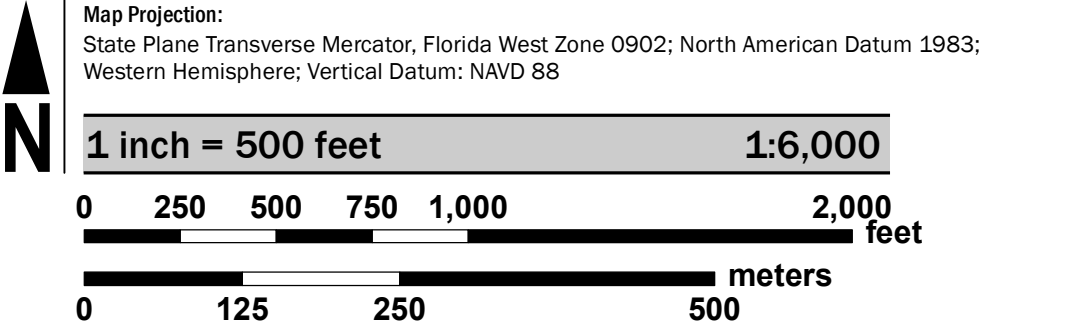
To determine if flood insurance is available in this community, contact your Insurance agent or call the National Flood Insurance Program at 1-800-638-6620.

Base map information shown on this FIRM was provided by Lee County, dated 2008 and 2018; the Florida Department of Transportation, dated 2017 and 2018; the U.S. Department of Agriculture, dated 2018; and the U.S. Department of Transportation, dated 2017.

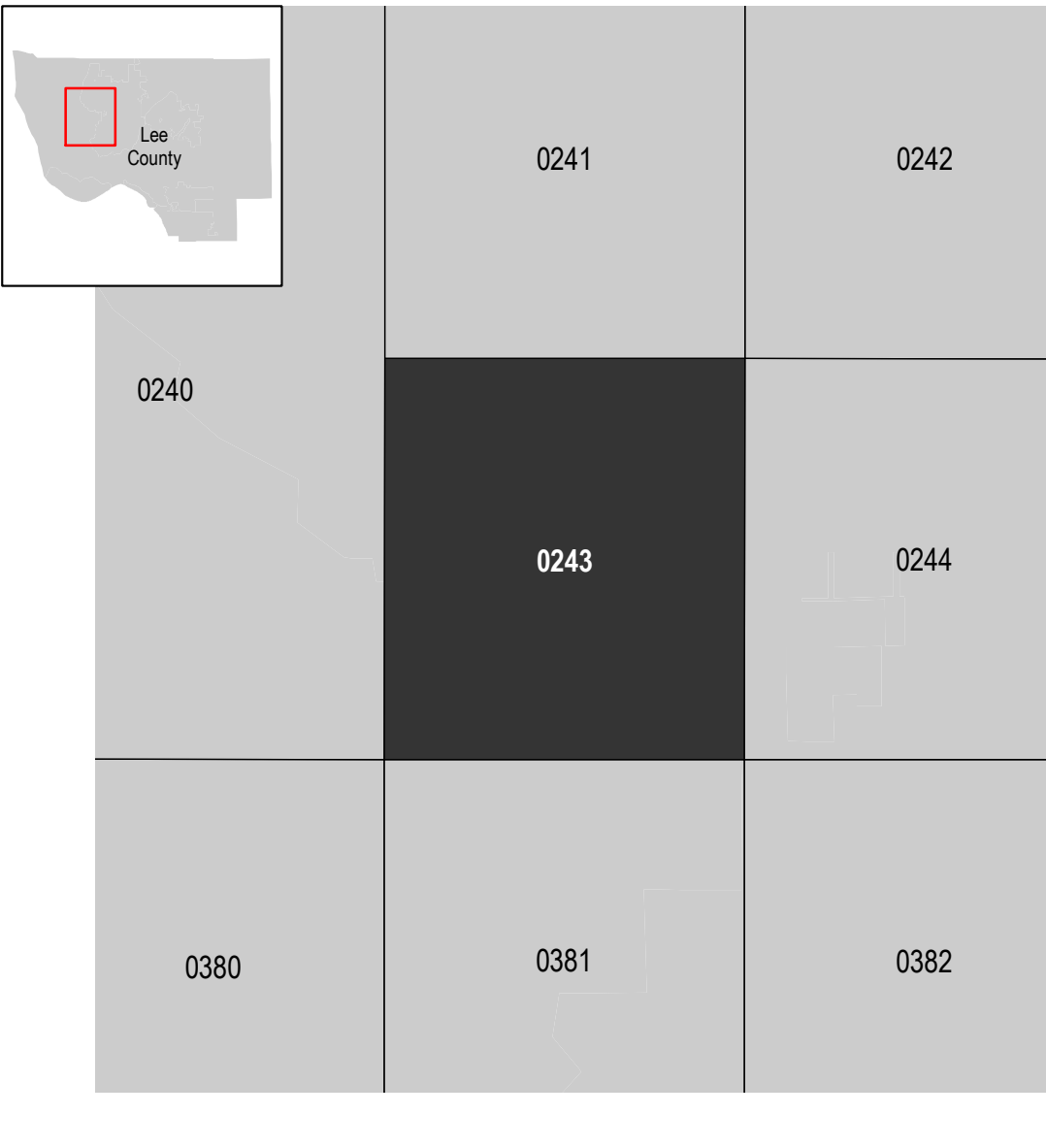
LIMIT OF MODERATE WAVE ACTION: Zone AE has been divided by a Limit of Moderate Wave Action (LIMWA). The LIMWA represents the approximate landward limit of the 1.5-foot breaking wave. The effects of wave hazards between Zone VE and the LIMWA (or between the shoreline and the LIMWA for areas where Zone VE is not identified) will be similar to, but less severe than, those in the Zone VE.

Limit of Moderate Wave Action (LIMWA)

SCALE



PANEL LOCATOR



National Flood Insurance Program

NATIONAL FLOOD INSURANCE PROGRAM
FLOOD INSURANCE RATE MAP

LEE COUNTY, FLORIDA
and Incorporated Areas

PANEL 243 of 685

Panel Contains:
COMMUNITY
CAPE CORAL, CITY OF
LEE COUNTY

NUMBER PANEL SUFFIX
125095 0243 G
125124 0243 G

VERSION NUMBER
2.4.3.5

MAP NUMBER
12071C0243G

MAP REVISED
NOVEMBER 17, 2022