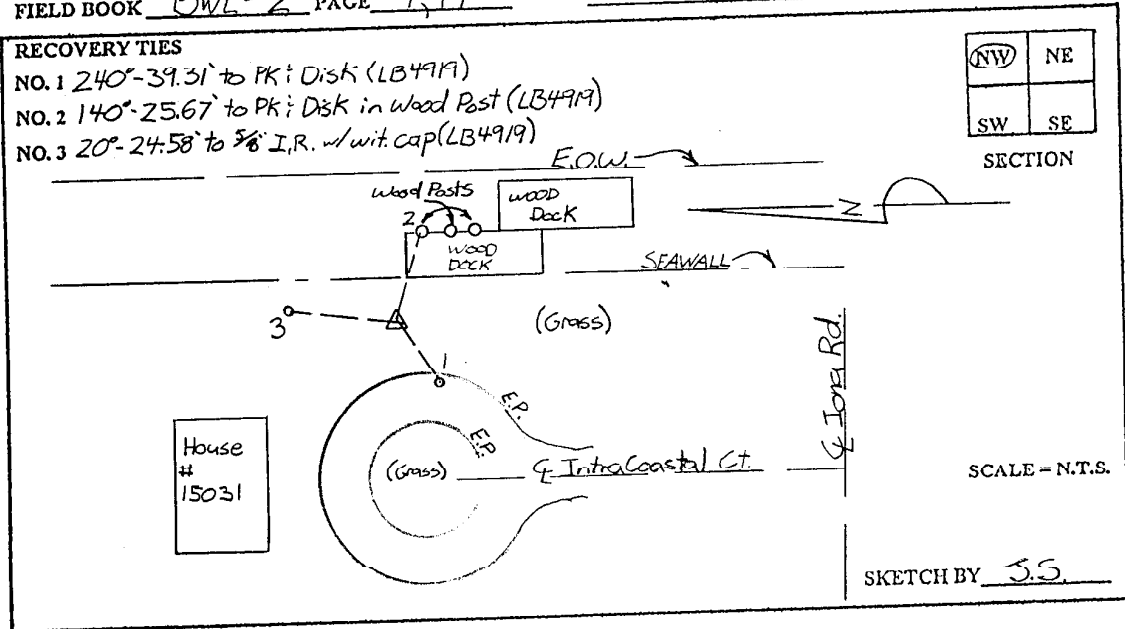


LEE COUNTY SURVEY MARK DESCRIPTION

DESIGNATION 2429 COUNTY LEE STATE FLORIDA
 LOCATED IN SEC 36 TWP 45S RGE 23E USGS QUAD MAP FORT MYERS SW

TO REACH SURVEY MARK:
 FROM MC GREGOR BLVD, RUN WEST ALONG IONA ROAD 1.3 mi. ± TO
 INTRACOASTAL CT; THENCE RUN NORTH ALONG INTRACOASTAL CT.
 0.25 mi. ± TO END.

TYPE OF SET 6" ROUND CONCRETE MONUMENT w/ 3" LEE COUNTY
 MARK PUBLIC WORKS ALUM. DISK DATE SET JUNE 17 19 98
 HORIZONTAL CONTROL ORIGINATED ON 2ND 1ST ORDER CONTROL BY _____
 ON 1927 DATUM. ON 1983 (1990 GPS ADJUSTMENT) DATUM.
 COORDINATES (FT). 2ND ORDER COORDINATES (FT) 2ND ORDER
 NORTHING (Y) _____ NORTHING (Y) 795641.22
 EASTING (X) _____ EASTING (X) 668539.59
 GRID FLORIDA TRANSVERSE MERCATOR RECOVERED BY _____
 ZONE WEST DATE CONDITION _____
 FIELD BOOK BWL #2 PAGE 4, 17



JOHNSON ENGINEERING, INC.

CIVIL ENGINEERS - LAND SURVEYORS

2158 JOHNSON STREET, POST OFFICE BOX 1550, FORT MYERS, FLORIDA, 33902-1550

PHONE: 941-334-0046