

# LEE COUNTY SURVEY MARK DESCRIPTION

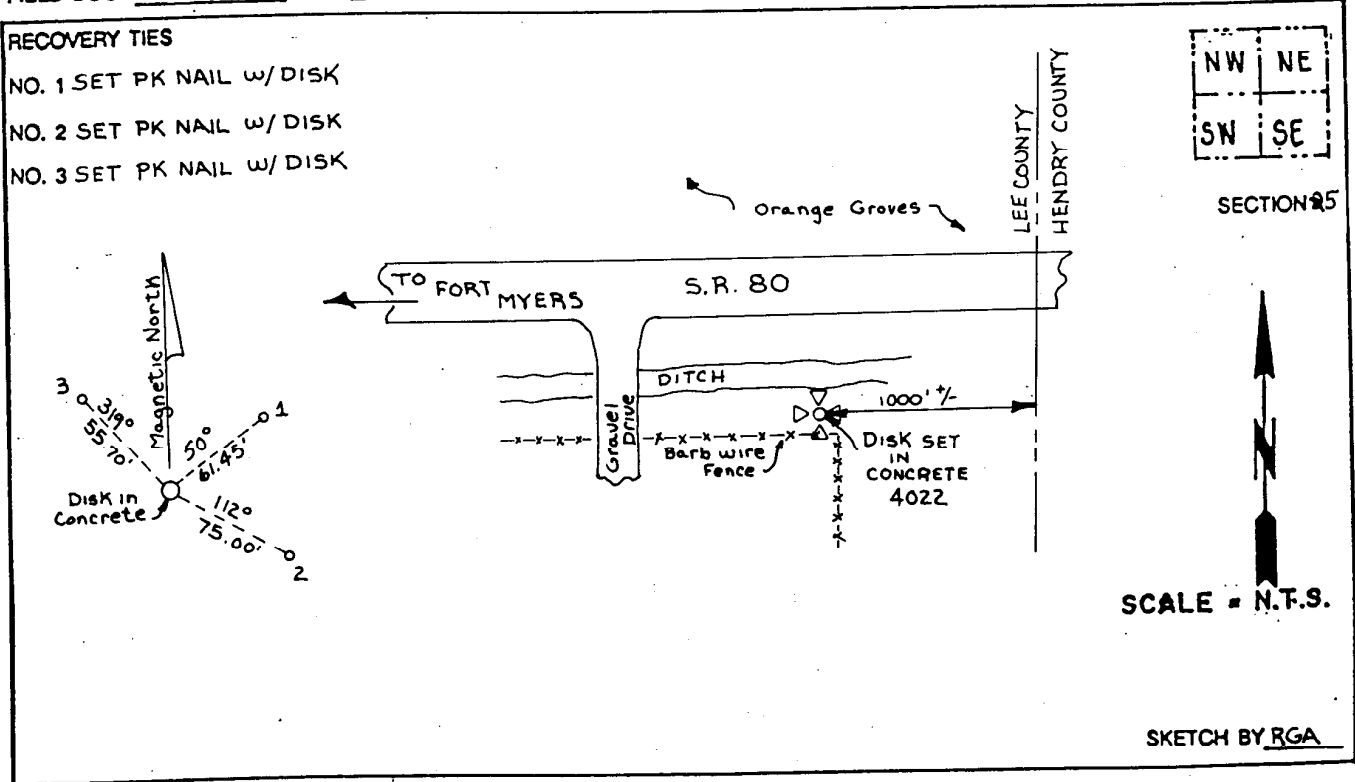
1359

DESIGNATION 4022 COUNTY LEE STATE FL.  
 LOCATED IN SEC 25 TWP 43S. RGE 27E. USGS QUAD MAP ALVA  
 TO REACH SURVEY MARK:

TYPE OF 3/4" Aluminum Lee County Survey Control Mark set in concrete  
 MARK 4022 DATE SET April 3 1998  
 HORIZONTAL CONTROL ORIGINATED ON 2<sup>nd</sup>/1<sup>st</sup> ORDER CONTROL BY National Geodetic Survey (NGS)  
 ON 1927 DATUM. ON 1983 (1990 GPS Adjustment) DATUM.  
 COORDINATES (FT), 2<sup>nd</sup> ORDER COORDINATES (FT), 2<sup>nd</sup> ORDER  
 NORTHING (M) NA NORTHING (M) 863685.0985  
 EASTING (M) NA EASTING (M) 796620.5505  
 GRID FLORIDA TRANSVERSE MERCATOR RECOVERED BY \_\_\_\_\_  
 ZONE WEST DATE, CONDITION \_\_\_\_\_  
 FIELD BOOK JEI #2 PAGE 2

**RECOVERY TIES**

- NO. 1 SET PK NAIL w/ DISK
- NO. 2 SET PK NAIL w/ DISK
- NO. 3 SET PK NAIL w/ DISK



**JOHNSON ENGINEERING, INC.**  
 CIVIL ENGINEERS - LAND SURVEYORS  
 2158 JOHNSON STREET, POST OFFICE BOX 1550, FORT MYERS, FLORIDA, 33902-1550  
 PHONE (941) 334-0046