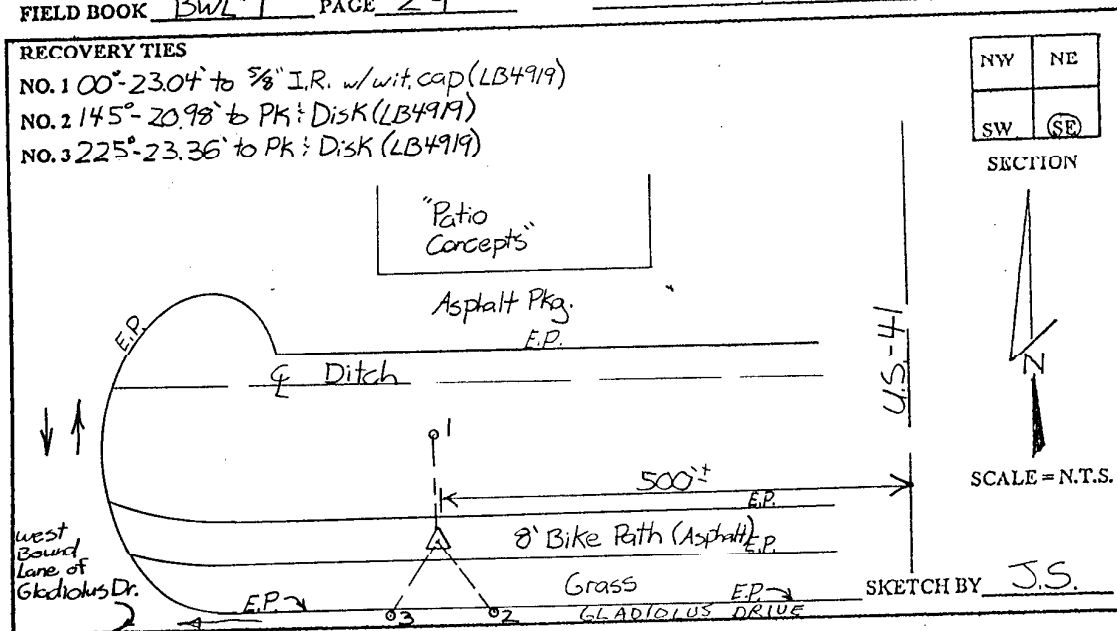


## LEE COUNTY SURVEY MARK DESCRIPTION

DESIGNATION 2382 COUNTY LEE STATE FLORIDA  
 LOCATED IN SEC 26 TWP 45S RGE 24E USGS QUAD MAP FORT MYERS SE

TO REACH SURVEY MARK:  
 FROM U.S.-41; RUN WEST ON GLADIOLUS DRIVE 500'± TO  
 MARK, LOCATED NORTH OF GLADIOLUS ON AN 8' BIKE PATH.

TYPE OF SET 3" LEE COUNTY PUBLIC WORKS ALUM. DISK IN  
 MARK PAVEMENT DATE SET JUNE 17 1998  
 HORIZONTAL CONTROL ORIGINATED ON 2ND+ST ORDER CONTROL BY \_\_\_\_\_  
 ON 1927 DATUM. ON 1983 (1990 GPS ADJUSTMENT) DATUM.  
 COORDINATES (FT). 2ND ORDER COORDINATES (FT) 2ND ORDER  
 NORTHING (Y) \_\_\_\_\_ NORTHING (Y) 797666.13  
 EASTING (X) \_\_\_\_\_ EASTING (X) 697768.39  
 GRID FLORIDA TRANSVERSE MERCATOR RECOVERED BY \_\_\_\_\_  
 ZONE WEST DATE CONDITION \_\_\_\_\_  
 FIELD BOOK BWL #1 PAGE 29



**JOHNSON ENGINEERING, INC.**  
 CIVIL ENGINEERS - LAND SURVEYORS  
 2158 JOHNSON STREET, POST OFFICE BOX 1550, FORT MYERS, FLORIDA, 33902-1550  
 PHONE: 941-334-0046