

LEE COUNTY
SURVEY MARK DESCRIPTION

DESIGNATION 2373 COUNTY LEE STATE FLORIDA
 LOCATED IN SEC 13 TWP 45S RGE 24E USGS QUAD MAP FORT MYERS SE

TO REACH SURVEY MARK:
 FROM DANIELS PKWY, RUN NORTH ALONG U.S.-41 0.7 mi.± TO WOODLAND BLVD
 (EAST OF COLLEGE PKWY); THENCE RUN EAST ALONG WOODLAND BLVD 0.5 mi.±
 TO WOODLAND TER; THENCE RUN SOUTH AND EASTERLY ALONG WOODLAND TER
 TO JASPER AVE; THENCE RUN EAST ALONG JASPER AVE TO TERRACE LANE. AND

MARK TYPE OF SET 3" LEE COUNTY PUBLIC WORKS ALUM. DISK IN
PAVEMENT DATE SET JUNE 4 1998

HORIZONTAL CONTROL ORIGINATED ON 2ND ORDER CONTROL BY _____
 ON 1927 DATUM. ON 1983 (1990 GPS ADJUSTMENT) DATUM.

COORDINATES (FT). 2ND ORDER COORDINATES (FT) 2ND ORDER
 NORTHING (Y) _____ NORTHING (Y) 807155.95
 EASTING (X) _____ EASTING (X) 702150.21

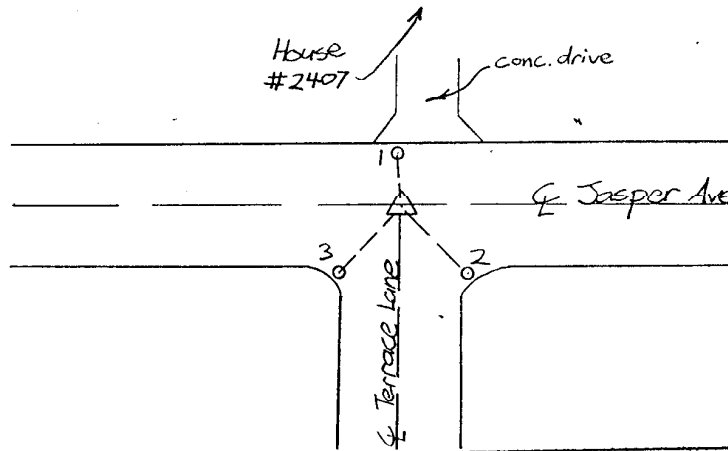
GRID FLORIDA TRANSVERSE MERCATOR RECOVERED BY _____
 ZONE WEST DATE CONDITION _____
 FIELD BOOK BWL #1 PAGE 30

RECOVERY TIES

- NO. 1 05°-8.31' to Pk: Disk (LB4919)
- NO. 2 145°-28.32' to Pk: Disk (LB4919)
- NO. 3 230°-29.73' to Pk: Disk (LB4919)

NW	NE
SW	SE

SECTION



SKETCH BY J.S.

JOHNSON ENGINEERING, INC.

CIVIL ENGINEERS - LAND SURVEYORS

2158 JOHNSON STREET, POST OFFICE BOX 1550, FORT MYERS, FLORIDA, 33902-1550

PHONE: 941-334-0046