

LEE COUNTY SURVEY MARK DESCRIPTION

DESIGNATION 2432 COUNTY LEE STATE FLORIDA
LOCATED IN SEC 35 TWP 45S RGE 23E USCS QUAD MAP FORT MYERS SW

TO REACH SURVEY MARK:
FROM MCGREGOR BLVD AND DAVIS ROAD; THENCE RUN NORTH ALONG
DAVIS ROAD TO END; THENCE RUN WEST ALONG IONA ROAD 500'± TO
ENTRANCE TO ST. CHARLES HARBOUR; THENCE RUN WESTERLY ALONG
BLENHEIM TRAIL TO KNIGHTS BRIDGE COURT; THENCE RUN NORTH ON KNIGHT
BRIDLE COURT 0.3 mi± TO MARK.

TYPE OF SET 3" LEE COUNTY PUBLIC WORKS ALUM. DISK
MARK IN PAVEMENT DATE SET APRIL 23 1998

HORIZONTAL CONTROL ORIGINATED ON 2ND 11TH ORDER CONTROL BY _____
ON 1927 DATUM. ON 1983 (1990 G.P.S. ADJUSTMENT) DATUM.

COORDINATES (FT). 2ND ORDER
NORTHING (Y) _____
EASTING (X) _____
NORTHING (Y) 791852.35
EASTING (X) 662344.10

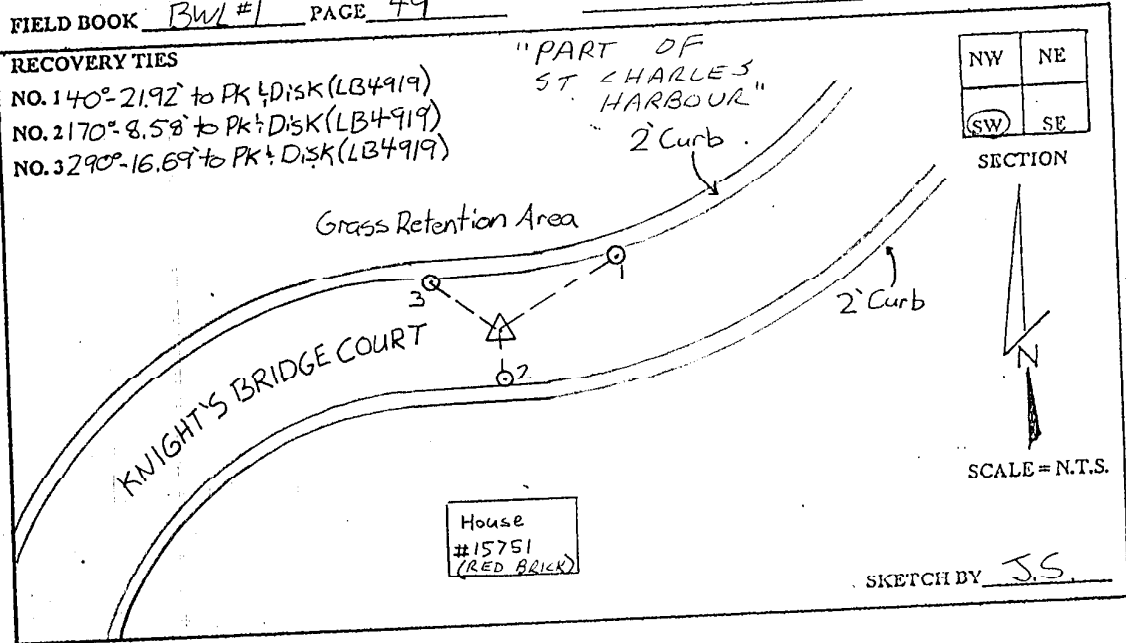
GRID FLORIDA TRANSVERSE MERCATOR RECOVERED BY _____
ZONE WEST DATE CONDITION _____

FIELD BOOK BWL #1 PAGE 49

RECOVERY TIES

- NO. 140°-21.92' to PK 1/2 DISK (LB4919)
- NO. 2170°-8.58' to PK 1/2 DISK (LB4919)
- NO. 3290°-16.69' to PK 1/2 DISK (LB4919)

"PART OF
ST. CHARLES
HARBOUR"
2' Curb



SKETCH BY J.S.

JOHNSON ENGINEERING, INC.

CIVIL ENGINEERS - LAND SURVEYORS

2158 JOHNSON STREET, POST OFFICE BOX 1550, FORT MYERS, FLORIDA, 33902-1550

PHONE: 941-334-0046