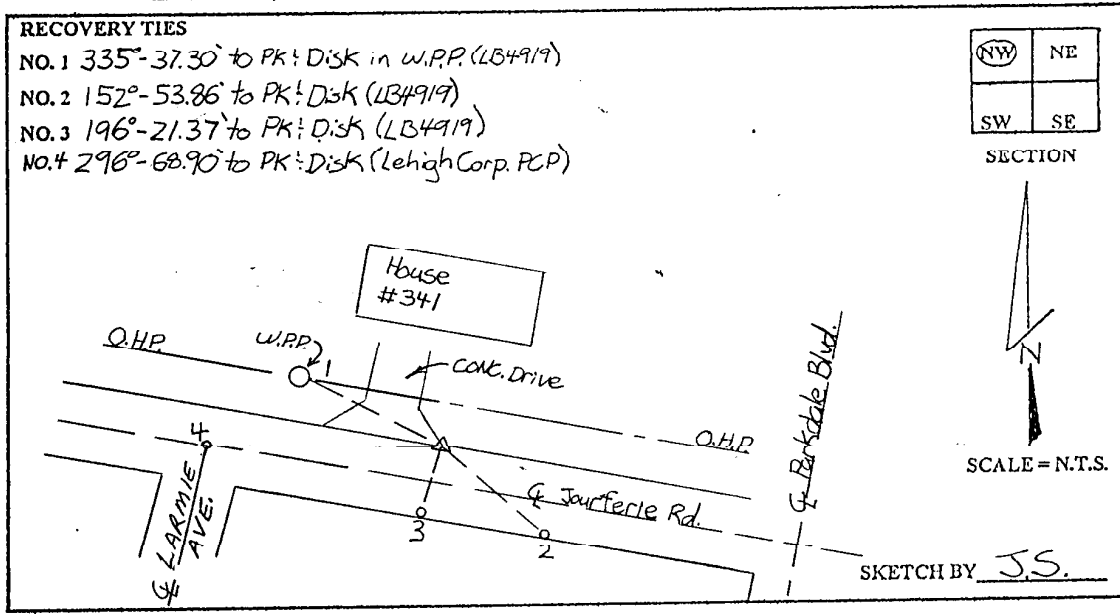


LEE COUNTY
SURVEY MARK DESCRIPTION

DESIGNATION 2102 COUNTY LEE STATE FLORIDA
 LOCATED IN SEC. 20 TWP 45S RGE 27E USGS QUAD MAP ALVA SW

TO REACH SURVEY MARK:
 FROM ALABAMA ROAD, RUN SOUTHEASTERLY ALONG S.R.-82 1.5 mi.± TO
 PARKDALE BLVD; THENCE RUN NORTHERLY ALONG PARKDALE BLVD. 0.4 mi.± TO
 SOURFERIE ROAD; THENCE RUN NORTH WESTERLY ALONG SOURFERIE ROAD
 TO HOUSE #341.

TYPE OF SET 6" ROUND CONCRETE MONUMENT W/ 3" LEE COUNTY
 MARK PUBLIC WORKS DISK DATE SET JUNE 19 19 98
 HORIZONTAL CONTROL ORIGINATED ON 2ND-1ST ORDER CONTROL BY _____
 ON _____ 1927 DATUM. ON 1983 (1990 GPS ADJUSTMENT) DATUM.
 COORDINATES (FT.) 2ND ORDER COORDINATES (FT.) 2ND ORDER
 NORTHING (Y) _____ NORTHING (Y) 807040.61
 EASTING (X) _____ EASTING (X) 774096.56
 GRID FLORIDA TRANSVERSE MERCATOR RECOVERED BY _____
 ZONE WEST DATE CONDITION _____
 FIELD BOOK BWL#4 PAGE 10



JOHNSON ENGINEERING, INC.

CIVIL ENGINEERS - LAND SURVEYORS

2158 JOHNSON STREET, POST OFFICE BOX 1550, FORT MYERS, FLORIDA, 33902-1550

PHONE: 941-334-0046