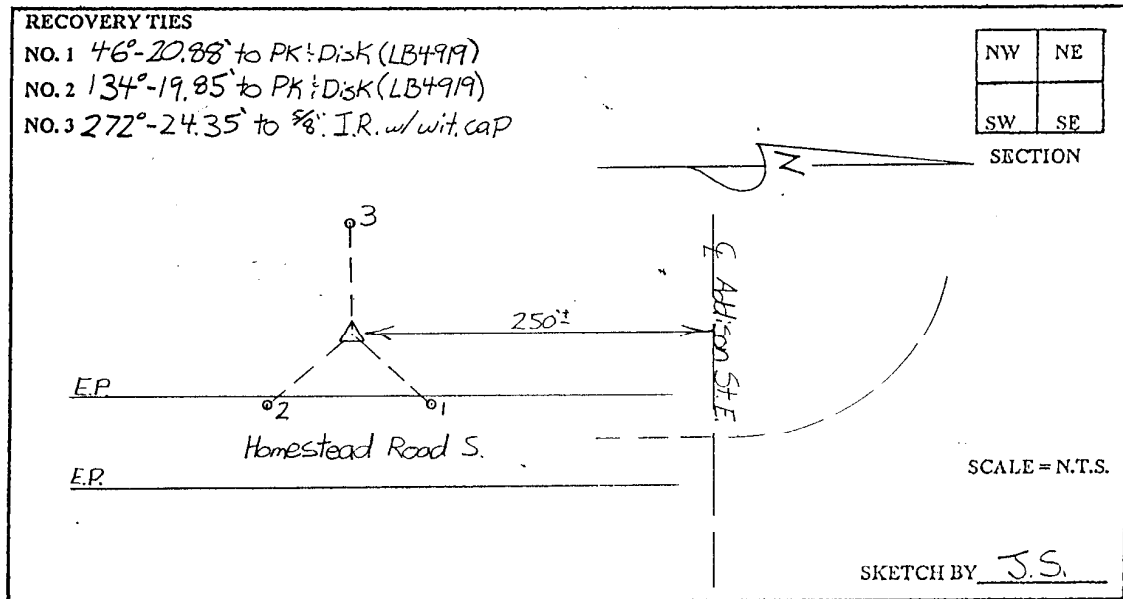


LEE COUNTY  
SURVEY MARK DESCRIPTION

DESIGNATION 2053 COUNTY LEE STATE FLORIDA  
 LOCATED IN SEC 21 TWP 45S RGE 27E USGS QUAD MAP ALVA SE

TO REACH SURVEY MARK:  
 FROM S.R.-82; RUN NORTHERLY ALONG HOMESTEAD ROAD S. 1.7 mi. +  
 TO ADDISON ST. E. DISK "2053" IS LOCATED 250' + S. OF ADDISON ST. E.  
 WEST OF HOMESTEAD ROAD S.

TYPE OF SET 6" ROUND CONCRETE MONUMENT W/ 3" LEE COUNTY  
 MARK PUBLIC WORKS ALUM DISK DATE SET JUNE 22 1998  
 HORIZONTAL CONTROL ORIGINATED ON 2ND-1ST ORDER CONTROL BY \_\_\_\_\_  
 ON 1927 DATUM. ON 1983 (1990 GPS ADJUSTMENT) DATUM.  
 COORDINATES (FT.) 2ND ORDER COORDINATES (FT.) 2ND ORDER  
 NORTHING (Y) \_\_\_\_\_ NORTHING (X) 807302.86  
 EASTING (X) \_\_\_\_\_ EASTING (X) 780090.87  
 GRID FLORIDA TRANSVERSE MERCATOR RECOVERED BY \_\_\_\_\_  
 ZONE WEST DATE CONDITION \_\_\_\_\_  
 FIELD BOOK BWL #1 PAGE 7



JOHNSON ENGINEERING, INC.

CIVIL ENGINEERS - LAND SURVEYORS

2158 JOHNSON STREET, POST OFFICE BOX 1550, FORT MYERS, FLORIDA, 33902-1550

PHONE: 941-334-0046