

LEE COUNTY
SURVEY MARK DESCRIPTION

DESIGNATION 2113 COUNTY LEE STATE FLORIDA
 LOCATED IN SEC 7 TWP 45S RGE 27E USGS QUAD MAP ALVA SW

TO REACH SURVEY MARK:
 FROM SR-82; RUN NORTH EASTERLY ALONG ALABAMA ROAD 2.5 mi.± TO MILWAUKEE BLVD; THENCE RUN SOUTH EASTERLY ALONG MILWAUKEE BLVD TO PENNFIELD STREET; THENCE RUN NORTH EASTERLY ALONG PENNFIELD ST. TO PETITE AVE; THENCE RUN SOUTH EASTERLY ALONG PETITE AVE. TO PARTRIDGE ST. AND TO MARK.

TYPE OF SET 6" ROUND CONCRETE MONUMENT W/ 3" LEE COUNTY

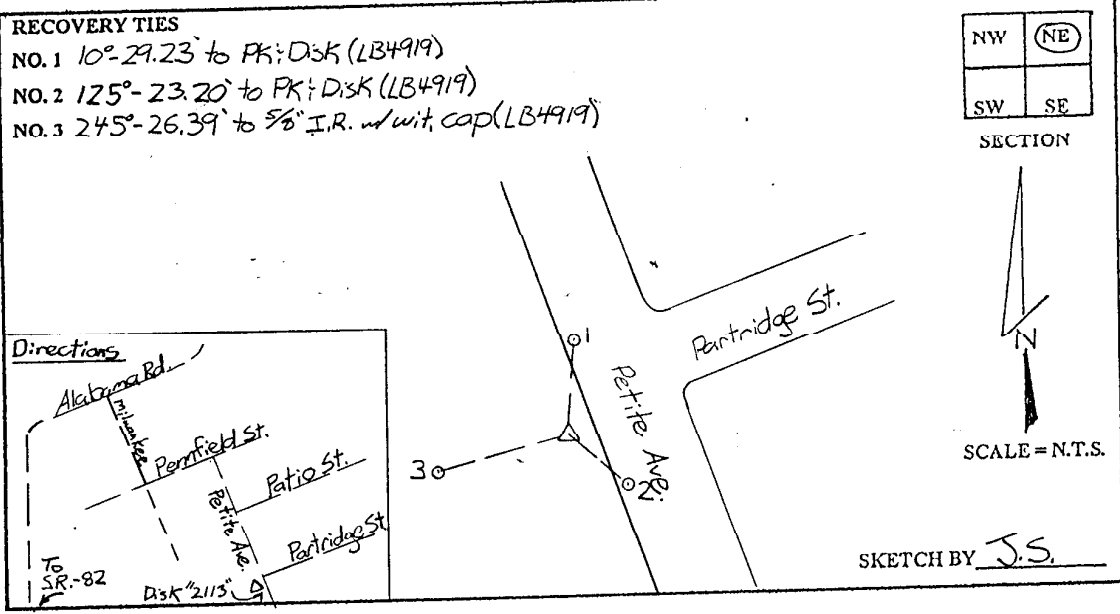
MARK PUBLIC WORKS ALUM. DISK DATE SET JUNE 19 19 98

HORIZONTAL CONTROL ORIGINATED ON 2ND ORDER CONTROL BY _____
 ON 1927 DATUM. ON 1983 (1990 GPS ADJUSTMENT) DATUM.

COORDINATES (FT). 2ND ORDER COORDINATES (FT) 2ND ORDER
 NORTHING (Y) _____ NORTHING (Y) 816027.45
 EASTING (X) _____ EASTING (X) 771552.77

GRID FLORIDA TRANSVERSE MERCATOR RECOVERED BY _____
 ZONE WEST DATE CONDITION _____

FIELD BOOK BWL# 1 PAGE 16



JOHNSON ENGINEERING, INC.
 CIVIL ENGINEERS - LAND SURVEYORS
 2158 JOHNSON STREET, POST OFFICE BOX 1550, FORT MYERS, FLORIDA, 33902-1550
 PHONE: 941-334-0046