

LEE COUNTY
SURVEY MARK DESCRIPTION

DESIGNATION 2248 COUNTY LEE STATE FLORIDA
LOCATED IN SEC 23 TWP 45S RGE 22E USGS QUAD MAP PINE ISLAND CENTER

TO REACH SURVEY MARK:
FROM PINE ISLAND CENTER, RUN SOUTH ALONG STRINGFELLOW ROAD
5.5 mi.± TO PINETREE DRIVE; THENCE RUN EASTERLY ALONG PINETREE DR.
0.6 mi.± TO MARK.

TYPE OF SET 6" ROUND CONCRETE MONUMENT W/ 3" LEE COUNTY
MARK PUBLIC WORKS ALUM. DISK DATE SET APRIL 24 19 98

HORIZONTAL CONTROL ORIGINATED ON 2ND ORDER CONTROL BY _____
ON 1927 DATUM ON 1983 (1990 GPS ADJUSTMENT) DATUM.

COORDINATES (FT.) 2ND ORDER COORDINATES (FT.) 2ND ORDER
NORTHING (Y) _____ NORTHING (Y) 801652.74
EASTING (X) _____ EASTING (X) 630300.29

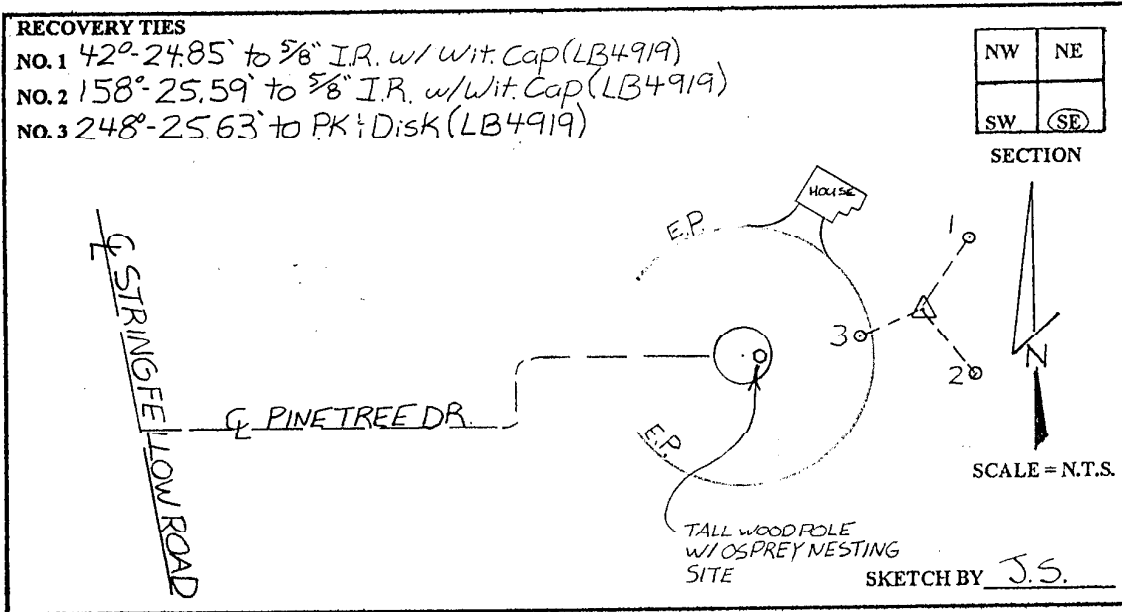
GRID FLORIDA TRANSVERSE MERCATOR RECOVERED BY _____
ZONE WEST DATE CONDITION _____
FIELD BOOK BWL#2 PAGE 6

RECOVERY TIES

- NO. 1 42°-24.85' to 5/8" I.R. w/ Wit. Cap (LB4919)
- NO. 2 158°-25.59' to 5/8" I.R. w/ Wit. Cap (LB4919)
- NO. 3 248°-25.63' to PK 1/2 Disk (LB4919)

NW	NE
SW	SE

SECTION



JOHNSON ENGINEERING, INC.

CIVIL ENGINEERS - LAND SURVEYORS

2158 JOHNSON STREET, POST OFFICE BOX 1550, FORT MYERS, FLORIDA, 33902-1550

PHONE: 941-334-0046