

LEE COUNTY SURVEY MARK DESCRIPTION

DESIGNATION 2282 COUNTY LEE STATE FLORIDA
 LOCATED IN SEC 3 TWP 45S RGE 23E USGS QUAD MAP PINE ISLAND CENTER

TO REACH SURVEY MARK:
 FROM CAPE CORAL PKWY. RUN NORTH ON CHIQUITA BLVD. 1 mi. ± TO
 MOHAWK PKWY. DISK IS LOCATED ON TIP OF TURN ARROW
 IN RIGHT HAND TURN LANE OF WEST BOUND LANE - MOHAWK PKWY

TYPE OF SFT 3" LEE COUNTY PUBLIC WORKS ALUM. DISK IN PAVEMENT
 MARK _____ DATE SET JUNE 5 1998

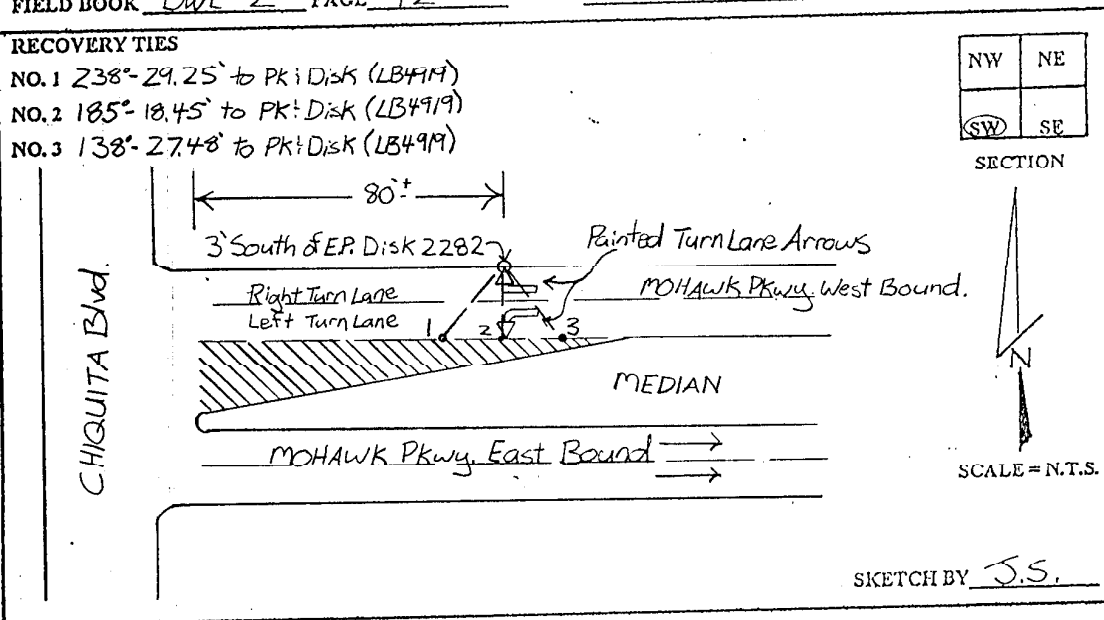
HORIZONTAL CONTROL ORIGINATED ON 2ND ORDER ORDER CONTROL BY _____
 ON 1927 DATUM. ON 1983 (1990 GPS ADJUSTMENT) DATUM.

COORDINATES (FT) 2ND ORDER COORDINATES (FT) 2ND ORDER
 NORTHING (Y) _____ NORTHING (X) 815701.97
 EASTING (X) _____ EASTING (X) 654036.42

GRID FLORIDA TRANSVERSE MERCATOR RECOVERED BY _____
 ZONE WEST DATE CONDITION _____
 FIELD BOOK BWL#2 PAGE 12

RECOVERY TIES

- NO. 1 238°-29.25' to PK+Disk (LB4911)
- NO. 2 185°-18.45' to PK+Disk (LB4919)
- NO. 3 138°-27.48' to PK+Disk (LB4919)



JOHNSON ENGINEERING, INC.

CIVIL ENGINEERS - LAND SURVEYORS

2158 JOHNSON STREET, POST OFFICE BOX 1550, FORT MYERS, FLORIDA, 33902-1550

PHONE: 941-334-0046