

LEE COUNTY
SURVEY MARK DESCRIPTION

DESIGNATION 2002 COUNTY HENDRY STATE FLORIDA
LOCATED IN SEC 31 TWP 45 S RGE 28 E USGS QUAD MAP ALVA SE

TO REACH SURVEY MARK:

FROM COLONIAL BLVD. EXTENSION; RUN SOUTH EASTERLY ALONG S.R.-82
1.6 mi. ± TO END COUNTY SIGN (LEE COUNTY); THENCE RUN NORTHERLY ALONG
AN OLD GRASS AND DIRT ROAD 1 mi. ± TO A LIMEROCK ROAD JUST SOUTH OF AN
ORANGE GROVE.

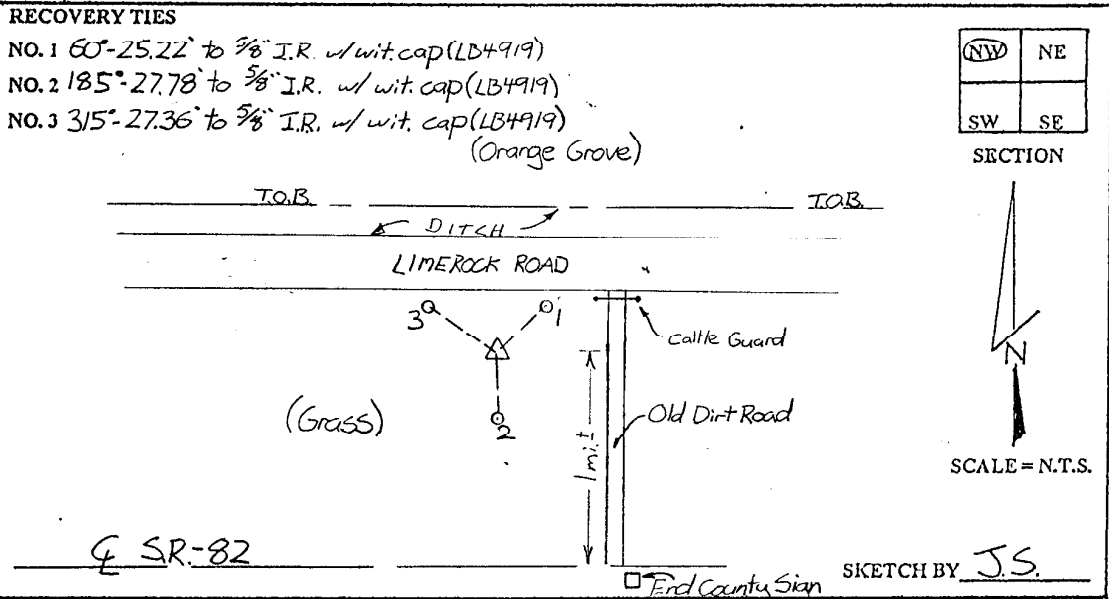
TYPE OF SET 6" ROUND CONCRETE MONUMENT W/ 3" LEE COUNTY
MARK PUBLIC WORKS DISK DATE SET JUNE 22 19 98

HORIZONTAL CONTROL ORIGINATED ON 2ND 4TH ORDER CONTROL BY _____
ON 1927 DATUM. ON 1983 (1990 GPS ADJUSTMENT) DATUM.

COORDINATES (FT.) 2ND ORDER COORDINATES (FT.) 2ND ORDER
NORTHING (Y) _____ NORTHING (Y) 797779.77
EASTING (X) _____ EASTING (X) 800412.56

GRID FLORIDA TRANSVERSE MERCATOR RECOVERED BY _____
ZONE WEST DATE CONDITION _____

FIELD BOOK BWL#1 PAGE 13



JOHNSON ENGINEERING, INC.

CIVIL ENGINEERS - LAND SURVEYORS

2158 JOHNSON STREET, POST OFFICE BOX 1550, FORT MYERS, FLORIDA, 33902-1550

PHONE: 941-334-0046