

LEE COUNTY SURVEY MARK DESCRIPTION

DESIGNATION 2112 COUNTY LEE STATE FLORIDA
 LOCATED IN SEC 19 TWP 45S RGE 27E USGS QUAD MAP ALVA SW

TO REACH SURVEY MARK:

FROM ALABAMA ROAD; RUN SOUTH EASTERLY ALONG S.R.-82 0.68 mi. ±
 TO RUE LABEAU CIR.; THENCE CONTINUE RUNNING SOUTH EASTERLY ALONG
 S.R.-82 TO A TURN LANE LEADING TO A GATE ALONG A 4-STRAND BARBWIRE FENCE.
 MARK IS LOCATED ON TIP OF PAINTED TURN ARROW.

TYPE OF SFT 3" LEE COUNTY PUBLIC WORKS ALUM. DISK IN ASPHALT
 MARK _____ DATE SET JUNE 22 1998

HORIZONTAL CONTROL ORIGINATED ON 2ND-1ST ORDER CONTROL BY _____
 ON 1927 DATUM. ON 1983 (1990 GPS ADJUSTMENT) DATUM.

COORDINATES (FT.) 2ND ORDER COORDINATES (FT.) 2ND ORDER
 NORTHING (Y) _____ NORTHING (Y) 807140.43
 EASTING (X) _____ EASTING (X) 770722.72

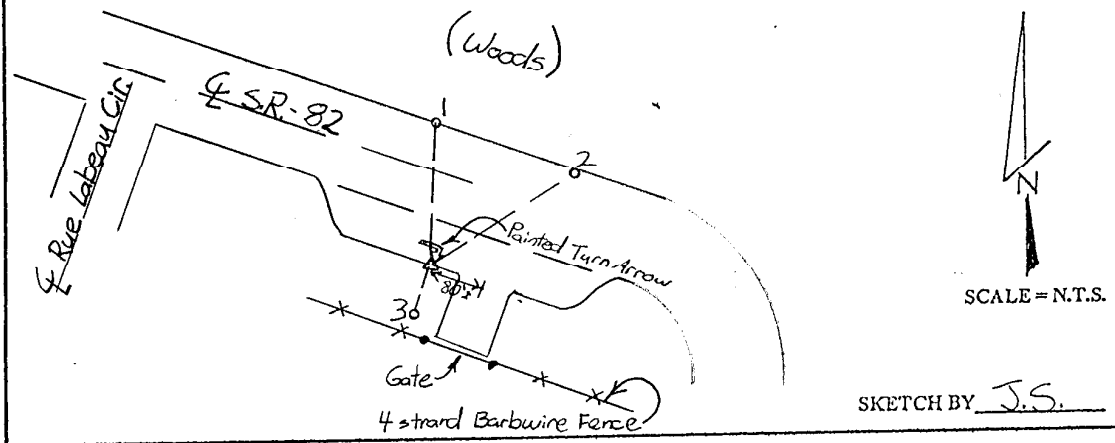
GRID FLORIDA TRANSVERSE MERCATOR RECOVERED BY _____
 ZONE WEST DATE CONDITION _____
 FIELD BOOK BWL #4 PAGE 11

RECOVERY TIES

- NO. 1 10°-36.02' to PK: Disk (LB4919)
- NO. 2 70°-40.32' to PK: Disk (LB4919)
- NO. 3 214°-25.91' to 5/8" I.R. w/wit. cap (LB4919)

NW	NE
SW	SE

SECTION



JOHNSON ENGINEERING, INC.

CIVIL ENGINEERS - LAND SURVEYORS
 2158 JOHNSON STREET, POST OFFICE BOX 1550, FORT MYERS, FLORIDA, 33902-1550
 PHONE: 941-334-0046