

LEE COUNTY SURVEY MARK DESCRIPTION

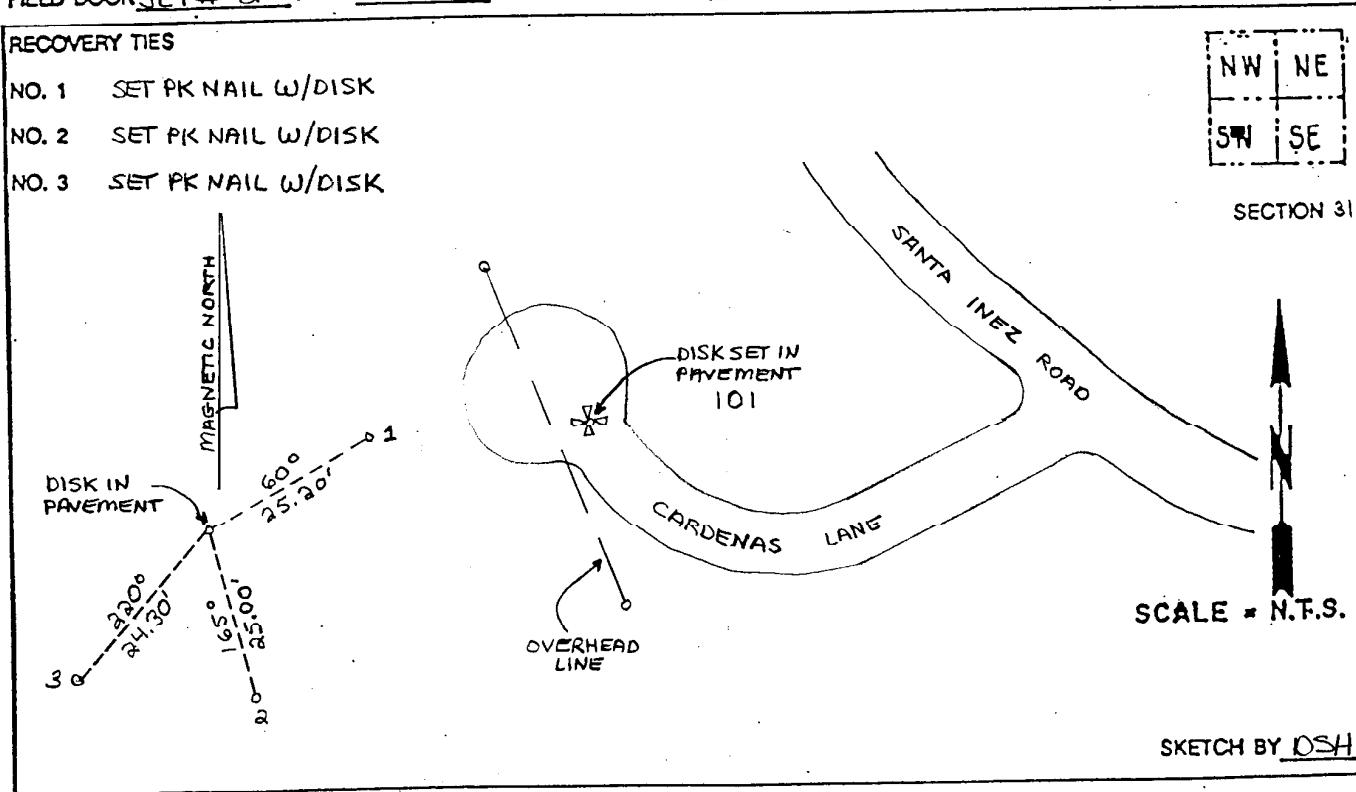
1318

DESIGNATION 101 COUNTY CHARLOITE STATE FL.
 LOCATED IN SEC 31 TWP 42 S RGE 23 E USGS QUAD MAP PUNTA GORDA SE
 TO REACH SURVEY MARK:

TYPE OF 3/4" ALUMINUM LEE COUNTY SURVEY CONTROL MARK SET IN PAVEMENT
 MARK 101 DATE SET APRIL 9 19 98
 HORIZONTAL CONTROL ORIGINATED ON 2nd/1st ORDER CONTROL BY NATIONAL GEODETIC SURVEY (NGS)
 ON 1927 DATUM. ON 1983 (1990 GPS Adjustment) DATUM.
 COORDINATES (FT.) 2nd ORDER COORDINATES (FT.) 2nd ORDER
 NORTHING (M) N/A NORTHING (M) 887134.6158
 EASTING (M) N/A EASTING (M) 639415.4768
 GRID FLORIDA TRANSVERSE MERCATOR RECOVERED BY _____
 ZONE WEST DATE, CONDITION _____
 FIELD BOOK JEI # 2 PAGE 63

RECOVERY TIES

- NO. 1 SET PK NAIL W/DISK
- NO. 2 SET PK NAIL W/DISK
- NO. 3 SET PK NAIL W/DISK



JOHNSON ENGINEERING, INC.
 CIVIL ENGINEERS - LAND SURVEYORS
 2158 JOHNSON STREET, POST OFFICE BOX 1550, FORT MYERS, FLORIDA, 33902-1550
 PHONE (941) 334-0046