

LEE COUNTY
SURVEY MARK DESCRIPTION

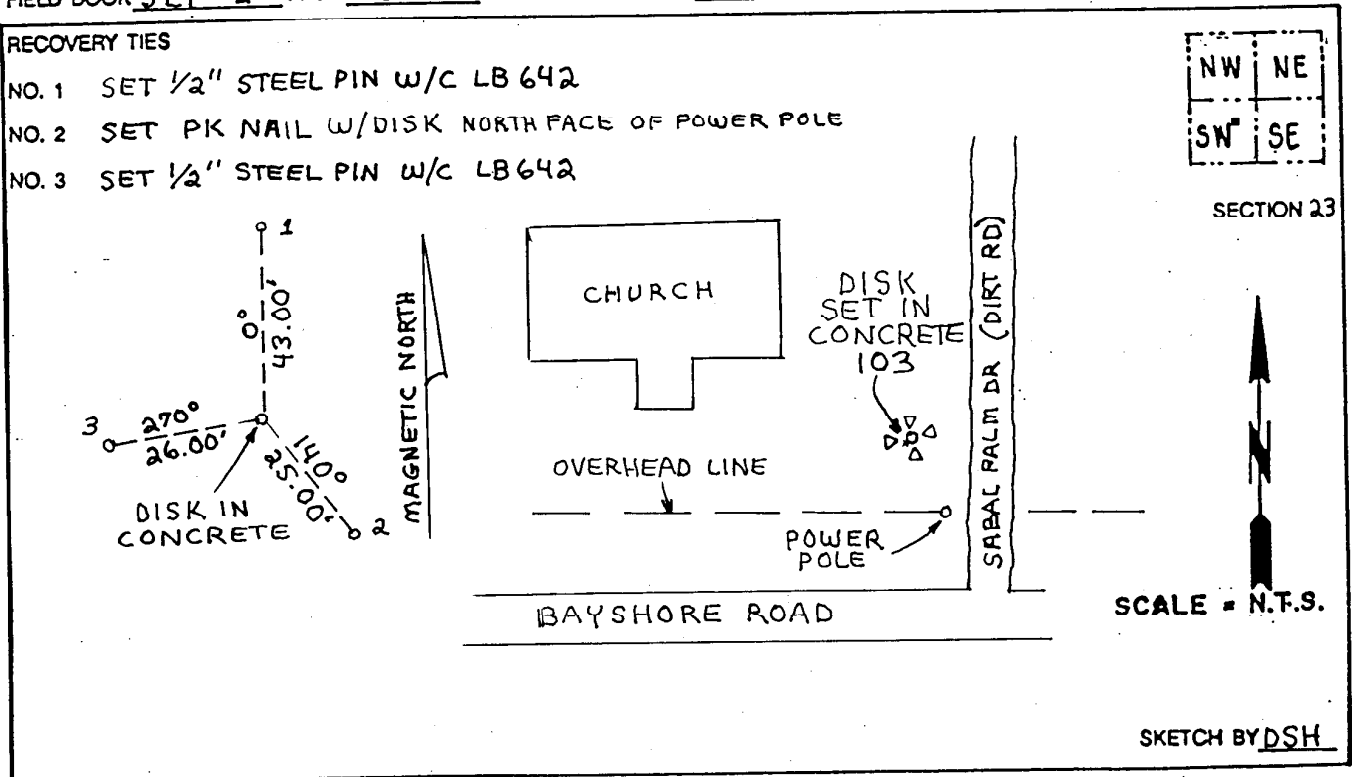
1286

DESIGNATION 103 COUNTY LEE STATE FL.
 LOCATED IN SEC 23 TWP 43 S RGE 25 E USGS QUAD MAP FORT MYERS
 TO REACH SURVEY MARK:

TYPE OF 3 1/4" ALUMINUM LEE COUNTY SURVEY CONTROL MARK SET IN CONCRETE
 MARK 103 DATE SET APRIL 3 19 98
 HORIZONTAL CONTROL ORIGINATED ON 2nd/1st ORDER CONTROL BY NATIONAL GEODETIC SURVEY (NGS)
 ON 1927 DATUM. ON 1983 (1990 GPS Adjustment) DATUM.
 COORDINATES (FT), 2nd ORDER COORDINATES (FT), 2nd ORDER
 NORTHING (M) N/A NORTHING (M) 865676.7971
 EASTING (M) N/A EASTING (M) 725358.0256
 GRID FLORIDA TRANSVERSE MERCATOR RECOVERED BY _____
 ZONE WEST DATE, CONDITION _____
 FIELD BOOK JEI #2 PAGE 65

RECOVERY TIES

- NO. 1 SET 1/2" STEEL PIN W/C LB 642
- NO. 2 SET PK NAIL W/DISK NORTH FACE OF POWER POLE
- NO. 3 SET 1/2" STEEL PIN W/C LB 642



JOHNSON ENGINEERING, INC.
 CIVIL ENGINEERS - LAND SURVEYORS
 2158 JOHNSON STREET, POST OFFICE BOX 1550, FORT MYERS, FLORIDA, 33902-1550
 PHONE (941) 334-0046