

LEE COUNTY
SURVEY MARK DESCRIPTION

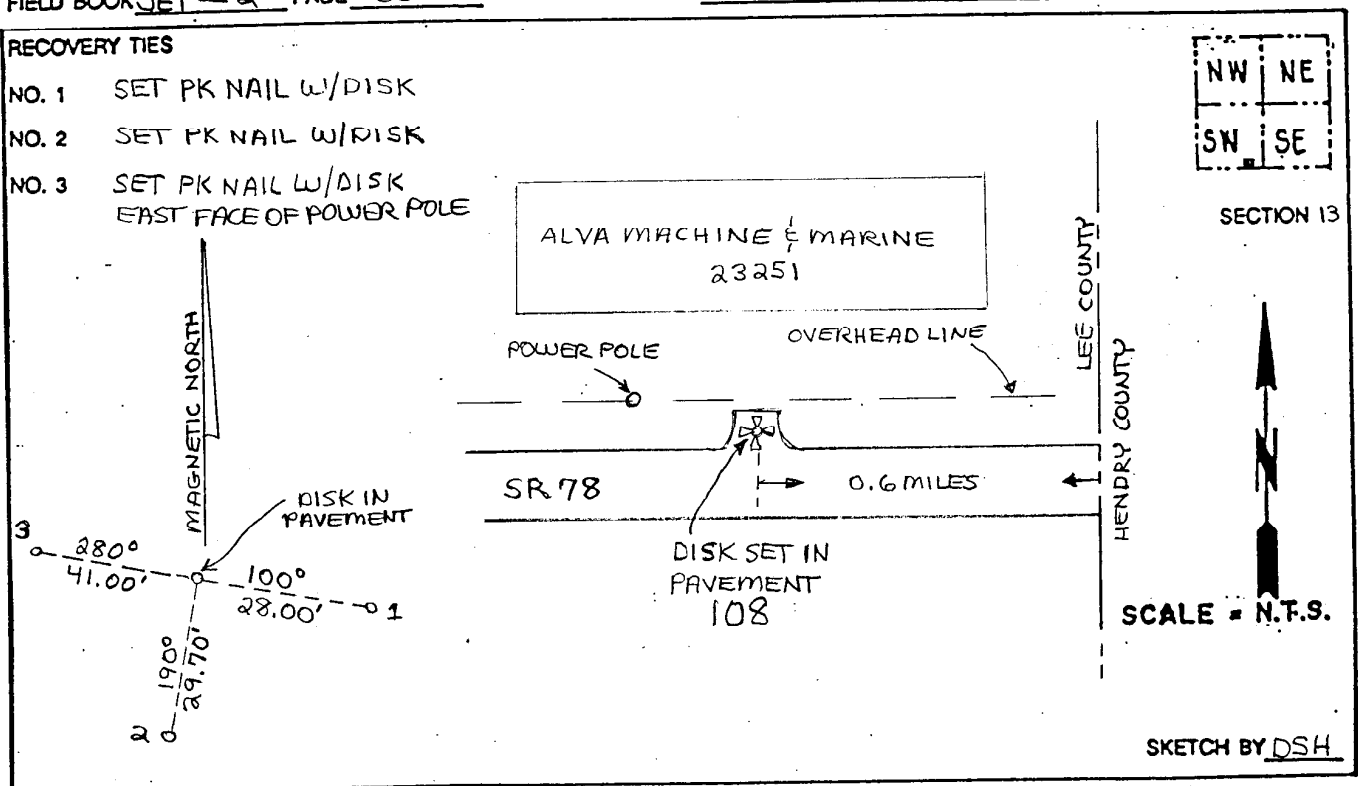
1285

DESIGNATION 108 COUNTY LEE STATE FL.
 LOCATED IN SEC 13 TWP 43 S RGE 27 E USGS QUAD MAP ALVA
 TO REACH SURVEY MARK:

TYPE OF 3/4" ALUMINUM LEE COUNTY SURVEY CONTROL MARK SET IN PAVEMENT
 MARK 108 DATE SET APRIL 6 1998
 HORIZONTAL CONTROL ORIGINATED ON 2nd/1st ORDER CONTROL BY NATIONAL GEODETIC SURVEY (NGS)
 ON 1927 DATUM. ON 1983 (1990 GPS Adjustment) DATUM.
 COORDINATES (FT). 2nd ORDER COORDINATES (FT). 2nd ORDER
 NORTHING (M) N/A NORTHING (M) 869647.0403
 EASTING (M) N/A EASTING (M) 793764.4038
 GRID FLORIDA TRANSVERSE MERCATOR RECOVERED BY _____
 ZONE WEST DATE, CONDITION _____
 FIELD BOOK JEI # 2 PAGE 68

RECOVERY TIES

- NO. 1 SET PK NAIL W/DISK
- NO. 2 SET PK NAIL W/RISK
- NO. 3 SET PK NAIL W/DISK
EAST FACE OF POWER POLE



SKETCH BY DSH