

## LEE COUNTY SURVEY MARK DESCRIPTION

DESIGNATION 152 COUNTY LEE STATE FLORIDA  
 LOCATED IN SEC 7 TWP 46S RGE 25E USGS QUAD MAP ESTERO

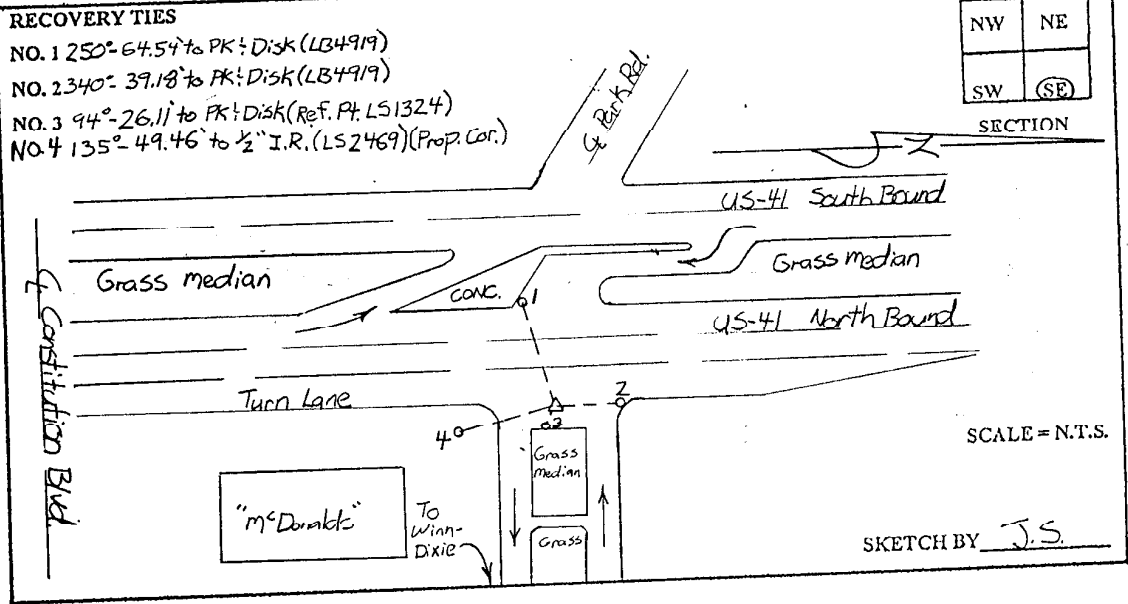
TO REACH SURVEY MARK:  
 FROM ALICO ROAD, RUN SOUTHERLY ALONG US - 41 . 1.2 mi. ± TO  
 PARK ROAD; THENCE RUN EASTERLY OPPOSITE OF PARK ROAD TO THE  
 ENTRANCE OF "WINN-DIXIE" SHOPPING PLAZA.

TYPE OF SET 3" LEE COUNTY PUBLIC WORKS DISK IN PAVEMENT  
 MARK \_\_\_\_\_ DATE SET JUNE 23 1998

HORIZONTAL CONTROL ORIGINATED ON 2<sup>ND</sup> 1<sup>ST</sup> ORDER CONTROL BY \_\_\_\_\_  
 ON 1927 DATUM. ON 1983 (1990 GPS ADJUSTMENT) DATUM.

COORDINATES (FT). 200 ORDER \_\_\_\_\_  
 COORDINATES (FT) 200 ORDER \_\_\_\_\_  
 NORTHING (Y) 779510.47  
 EASTING (X) 709184.33

GRID FLORIDA TRANSVERSE MERCATOR RECOVERED BY \_\_\_\_\_  
 ZONE WEST DATE CONDITION \_\_\_\_\_  
 FIELD BOOK BWL #4 PAGE 12



**JOHNSON ENGINEERING, INC.**

CIVIL ENGINEERS - LAND SURVEYORS

2158 JOHNSON STREET, POST OFFICE BOX 1550, FORT MYERS, FLORIDA, 33902-1550

PHONE: 941-334-0046