

LEE COUNTY
SURVEY MARK DESCRIPTION

DESIGNATION 310 COUNTY LEE STATE FLORIDA
 LOCATED IN SEC 2 TWP 46S RGE 22E USGS QUAD MAP SANIBEL

TO REACH SURVEY MARK:

FROM PINE ISLAND CENTER; RUN SOUTH ON STRINGFELLOW ROAD FOR APPROXIMATELY 7 MILES TO SANIBEL BLVD (LOCATED 1/8 MILE± SOUTH OF SMALL BRIDGE); TURN RIGHT ON SANIBEL BLVD AND CONTINUE 1/2 MILE±; TURN LEFT ON BAYVIEW AND THEN RIGHT ON WARREN DRIVE AND CONTINUE SOUTH TO SAN CARLOS DRIVE AND MARK.

TYPE OF SET 3" LEE COUNTY PUBLIC WORKS ALUM. DISK AT CORNER
 MARK OF CONCRETE DRIVE AND EOP DATE SET MAY 4 1998

HORIZONTAL CONTROL ORIGINATED ON 2ND ST ORDER CONTROL BY _____
 ON 1927 DATUM ON 1983 (1990 GPS ADJUSTMENT) DATUM.

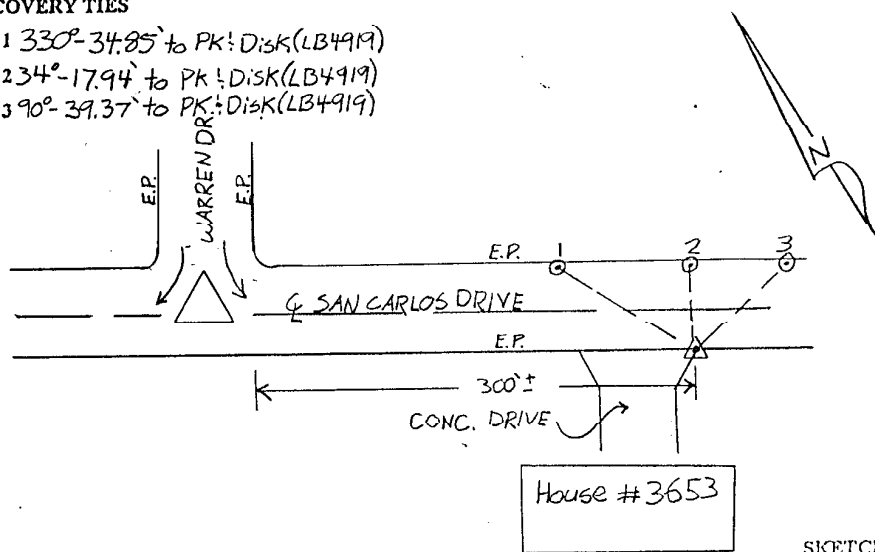
COORDINATES (FT) 2005 ORDER _____ COORDINATES (FT) 2005 ORDER _____
 NORTHING (Y) _____ NORTHING (Y) 784186.13
 EASTING (X) _____ EASTING (X) 628624.91

GRID FLORIDA TRANSVERSE MERCATOR
 ZONE WEST
 FIELD BOOK BWL 2 PAGE 13

RECOVERED BY _____
 DATE CONDITION _____

RECOVERY TIES

- NO. 1 330°-34.85' to PK: DISK (LB49M)
- NO. 2 34°-17.94' to PK: DISK (LB4919)
- NO. 3 90°-39.37' to PK: DISK (LB4919)



NW	NE
SW	SE

SECTION

SCALE = N.T.S.

SKETCH BY J.S.

JOHNSON ENGINEERING, INC.

CIVIL ENGINEERS - LAND SURVEYORS

2158 JOHNSON STREET, POST OFFICE BOX 1550, FORT MYERS, FLORIDA, 33902-1550

PHONE: 941-334-0046