

LEE COUNTY
SURVEY MARK DESCRIPTION

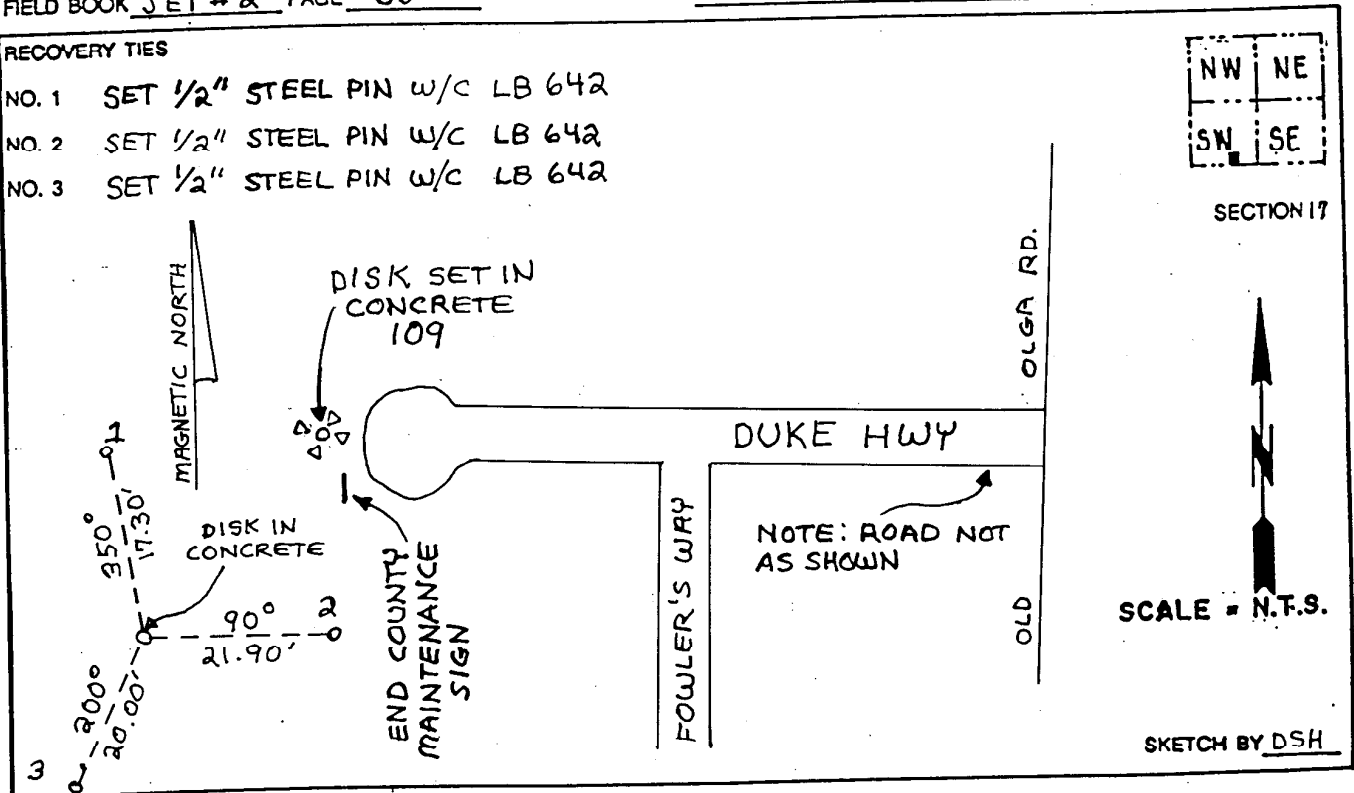
1233

DESIGNATION 109 COUNTY LEE STATE FL.
 LOCATED IN SEC 17 TWP 43 S. RGE 26 E. USGS QUAD MAP OLGA
 TO REACH SURVEY MARK:

TYPE OF 3/4" ALUMINUM LEE COUNTY SURVEY CONTROL MARK SET IN CONCRETE
 MARK 109 DATE SET APRIL 3 1998
 HORIZONTAL CONTROL ORIGINATED ON 2nd/1st ORDER CONTROL BY NATIONAL GEODETIC SURVEY (NGS)
 ON 1927 DATUM. ON 1983 (1990 GPS Adjustment) DATUM.
 COORDINATES (FT), 2nd ORDER COORDINATES (FI), 2nd ORDER
 NORTHING (M) N/A NORTHING (M) 869416.2711
 EASTING (M) N/A EASTING (M) 741259.1516
 GRID FLORIDA TRANSVERSE MERCATOR RECOVERED BY _____
 ZONE WEST DATE, CONDITION _____
 FIELD BOOK JEI # 2 PAGE 68

RECOVERY TIES

- NO. 1 SET 1/2" STEEL PIN w/c LB 642
- NO. 2 SET 1/2" STEEL PIN w/c LB 642
- NO. 3 SET 1/2" STEEL PIN w/c LB 642



JOHNSON ENGINEERING, INC.
 CIVIL ENGINEERS - LAND SURVEYORS
 2158 JOHNSON STREET, POST OFFICE BOX 1550, FORT MYERS, FLORIDA, 33902-1550
 PHONE (941) 334-0046