

## LEE COUNTY SURVEY MARK DESCRIPTION

DESIGNATION 81 COUNTY LEE STATE FLORIDA  
 LOCATED IN SEC 33 TWP 46S RGE 27E USGS QUAD MAP CORKSCREW

**TO REACH SURVEY MARK:**

FROM I-75 RUN EAST FROM EXIT 19 ALONG CORKSCREW ROAD 9 mi. ± TO A DIRT ROAD JUST EAST OF "CORKSCREW COUNTRY STORE", THENCE RUN SOUTH ALONG THIS DIRT ROAD 2 mi. ± TO A SAND AND GRASS ROAD RUNNING THROUGH AN ORANGE GROVE WITH A YELLOW GATE, THENCE RUN EAST 0.8 mi. ± TO ANOTHER GRASS ROAD, THENCE RUN SOUTH AND EAST ALONG SAID GRASS ROAD TO MARK.  
 TYPE OF SET 6" ROUND CONCRETE MONUMENT w/ 3" LEE COUNTY PUBLIC

MARK WORKS ALUM. DISK DATE SET JUNE 25 19 98  
 HORIZONTAL CONTROL ORIGINATED ON 2<sup>ND</sup> 1<sup>ST</sup> ORDER CONTROL BY \_\_\_\_\_

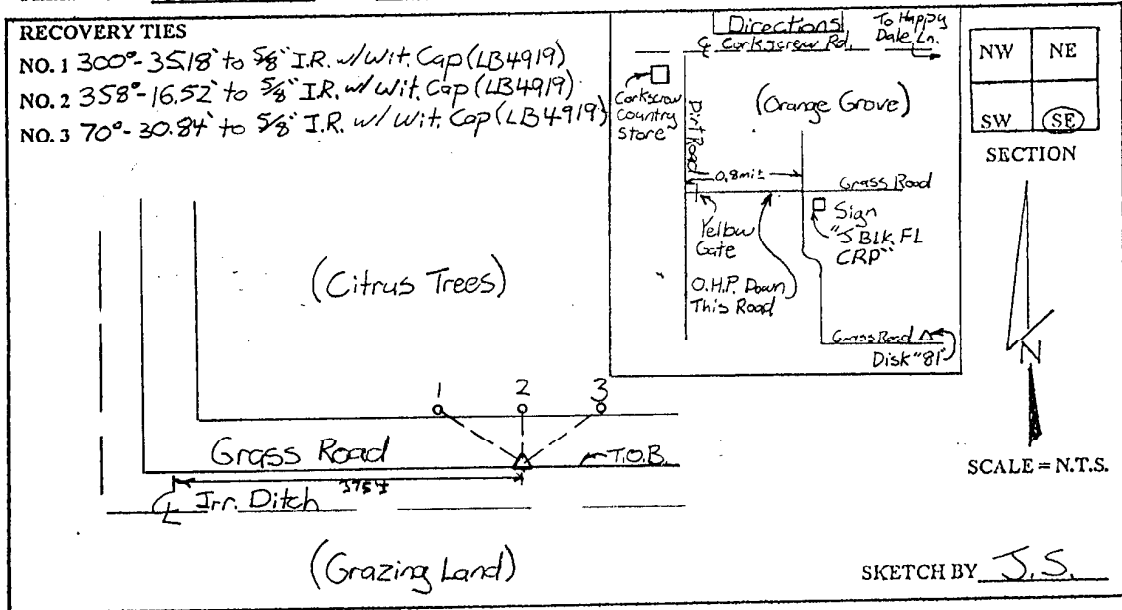
ON 1927 DATUM. ON 1983 (1990 GPS ADJUSTMENT) DATUM.

COORDINATES (FT). 2<sup>ND</sup> ORDER COORDINATES (FT) 2<sup>ND</sup> ORDER  
 NORTHING (Y) \_\_\_\_\_ NORTHING (Y) 759246.52  
 EASTING (X) \_\_\_\_\_ EASTING (X) 781943.66

GRID FLORIDA TRANSVERSE MERCATOR RECOVERED BY \_\_\_\_\_

ZONE WEST DATE CONDITION \_\_\_\_\_

FIELD BOOK BWL #4 PAGE 15



### JOHNSON ENGINEERING, INC.

CIVIL ENGINEERS - LAND SURVEYORS

2158 JOHNSON STREET, POST OFFICE BOX 1550, FORT MYERS, FLORIDA, 33902-1550

PHONE: 941-334-0046