

LEE COUNTY SURVEY MARK DESCRIPTION

1214

DESIGNATION 141 COUNTY LEE STATE FL.

LOCATED IN SEC 35 TWP 43S RGE 25E USGS QUAD MAP FORT MYERS

TO REACH SURVEY MARK:

TYPE OF 3/4" ALUMINUM LEE COUNTY SURVEY CONTROL MARK SET IN PAVEMENT

MARK 141 DATE SET APRIL 6 1998

HORIZONTAL CONTROL ORIGINATED ON 2nd/1st ORDER CONTROL BY NATIONAL GEODETIC SURVEY (NGS)

ON 1927 DATUM. ON 1983 (1990 GPS Adjustment) DATUM.

COORDINATES (FT), 2nd ORDER COORDINATES (FT), 2nd ORDER

NORTHING (M) N/A NORTHING (M) 858028.6007

EASTING (M) N/A EASTING (M) 726943.9252

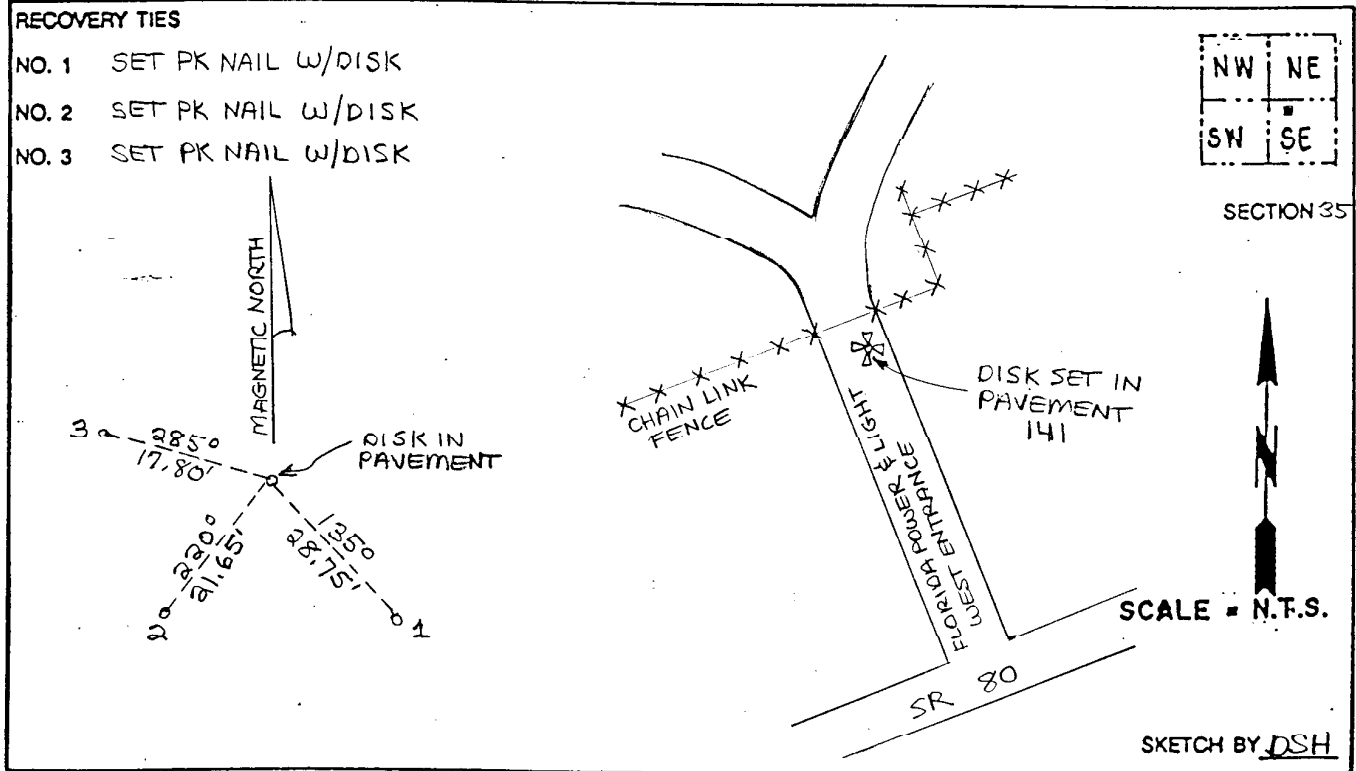
GRID FLORIDA TRANSVERSE MERCATOR RECOVERED BY _____

ZONE WEST DATE CONDITION _____

FIELD BOOK JEL # 4 PAGE 8

RECOVERY TIES

- NO. 1 SET PK NAIL W/DISK
- NO. 2 SET PK NAIL W/DISK
- NO. 3 SET PK NAIL W/DISK



JOHNSON ENGINEERING, INC.
 CIVIL ENGINEERS - LAND SURVEYORS
 2158 JOHNSON STREET, POST OFFICE BOX 1550, FORT MYERS, FLORIDA, 33902-1550
 PHONE (941) 334-0046