

LEE COUNTY
SURVEY MARK DESCRIPTION

DESIGNATION 153 COUNTY LEE STATE FLORIDA
 LOCATED IN SEC 18 TWP 46S RGE 25E USGS QUAD MAP ESTERO

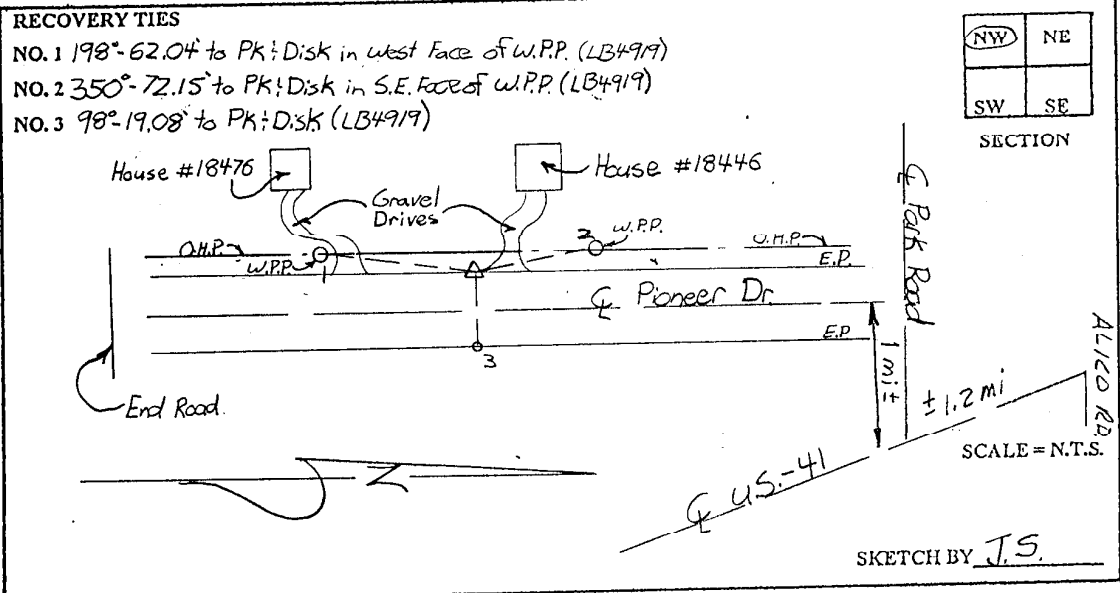
TO REACH SURVEY MARK:
 FROM ALICO ROAD, RUN SOUTHERLY ALONG US-41 1.2 mi.± TO PARK ROAD,
 THENCE RUN WESTERLY ALONG PARK ROAD 1 mi.± TO PIONEER DR., THENCE
 RUN SOUTH DOWN PIONEER DR. 0.3 mi.± TO HOUSE #18446.

TYPE OF SET 6" ROUND CONCRETE MONUMENT w/ 3" LEE COUNTY PUBLIC
 MARK WORKS ALUM. DISK DATE SET June 23 19 98

HORIZONTAL CONTROL ORIGINATED ON 2ND ORDER CONTROL BY _____
 ON 1927 DATUM. ON 1983 (1990 GPS ADJUSTMENT) DATUM.

COORDINATES (FT). 2ND ORDER COORDINATES (FT) 2ND ORDER
 NORTHING (Y) _____ NORTHING (Y) 778180.94
 EASTING (X) _____ EASTING (X) 704215.75

GRID FLORIDA TRANSVERSE MERCATOR RECOVERED BY _____
 ZONE WEST DATE CONDITION _____
 FIELD BOOK BWL #4 PAGE 12



JOHNSON ENGINEERING, INC.

CIVIL ENGINEERS - LAND SURVEYORS
 2158 JOHNSON STREET, POST OFFICE BOX 1550, FORT MYERS, FLORIDA, 33902-1550
 PHONE: 941-334-0046