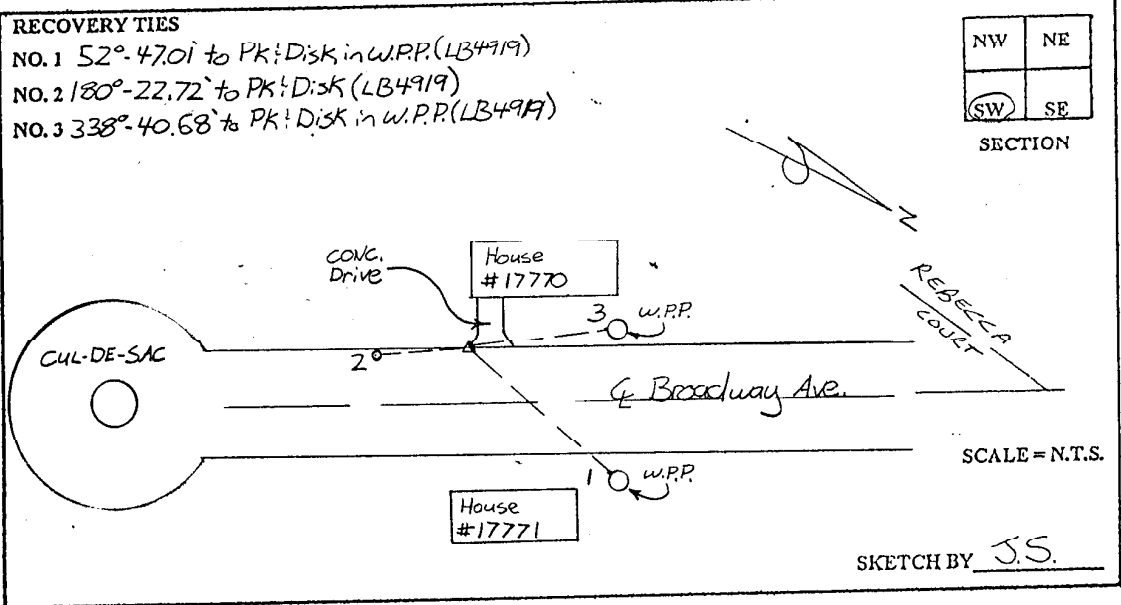


LEE COUNTY
SURVEY MARK DESCRIPTION

DESIGNATION 256 COUNTY LEE STATE FLORIDA
 LOCATED IN SEC 7 TWP 46S RGE 24E USGS QUAD MAP FORT MYERS BEACH
 TO REACH SURVEY MARK:
 FROM SUMMERLIN ROAD, RUN SOUTH ALONG SANCARLOS BLVD. 0.6 mi. TO
 BROADWAY AVE., THENCE RUN SOUTH EASTERLY ALONG BROADWAY AVE TO
 THE INTERSECTION OF REBECCA CT., THENCE CONTINUE ALONG BROADWAY
 AVE. HEADING SOUTHERLY TO HOUSE #1770.
 TYPE OF SET 6" CONCRETE MONUMENT W/ 3" LEE COUNTY PUBLIC WORKS
 MARK ALUM. DISK DATE SET JUNE 16 1998
 HORIZONTAL CONTROL ORIGINATED ON ~~2ND~~ 1ST ORDER CONTROL BY _____
 ON 1927 DATUM. ON 1983 (1990 GPS ADJUSTMENT) DATUM.
 COORDINATES (FT.) ~~2ND~~ 1ST ORDER COORDINATES (FT.) ~~2ND~~ 1ST ORDER
 NORTHING (Y) _____ NORTHING (Y) 780491.05
 EASTING (X) _____ EASTING (X) 674661.07
 GRID FLORIDA TRANSVERSE MERCATOR RECOVERED BY _____
 ZONE WEST DATE CONDITION _____
 FIELD BOOK BWL #4 PAGE 8



JOHNSON ENGINEERING, INC.

CIVIL ENGINEERS - LAND SURVEYORS

2158 JOHNSON STREET, POST OFFICE BOX 1550, FORT MYERS, FLORIDA, 33902-1550

PHONE: 941-334-0046