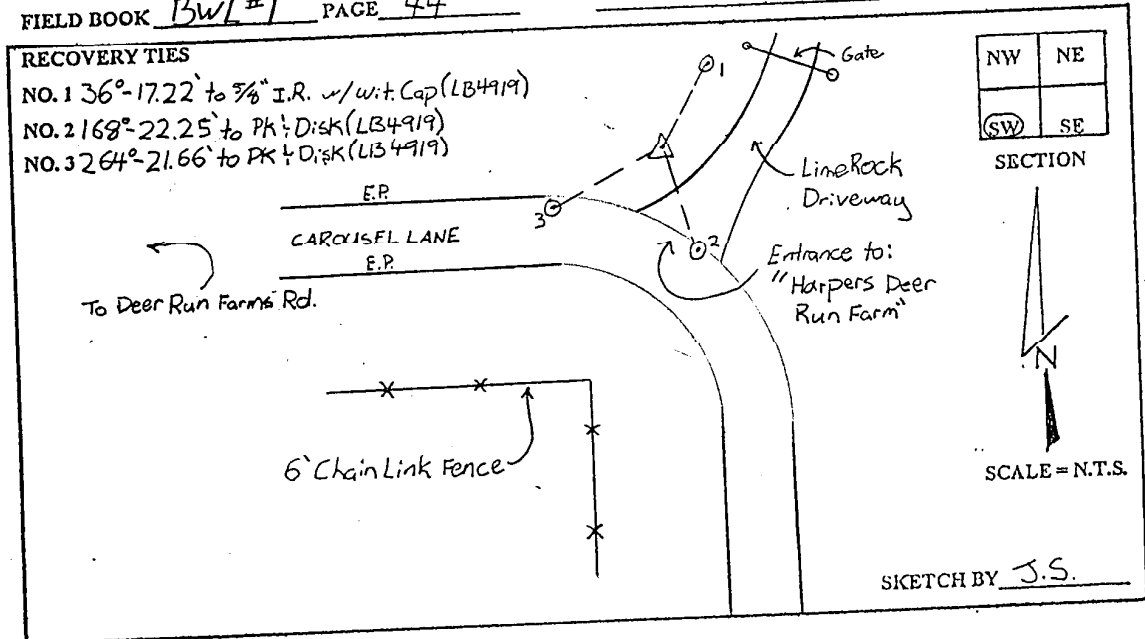


LEE COUNTY SURVEY MARK DESCRIPTION

DESIGNATION 2354 COUNTY LEE STATE FLORIDA
 LOCATED IN SEC 5 TWP 45S RGE 25E USGS QUAD MAP FORT MYERS SE
 TO REACH SURVEY MARK:
 FROM METRO PKWY; RUN EAST ALONG COLONIAL BLVD. 0.7 mi. ± TO DEER
 RUN FARMS ROAD; THENCE RUN SOUTHERLY ALONG DEER RUN FARMS ROAD
 0.75 mi. ± TO CAROUSEL LN; THENCE RUN EAST ALONG CAROUSEL LN. 0.2 mi ±
 TO MARK.
 TYPE OF SET 6" ROUND CONCRETE MONUMENT W/ 3" LEE COUNTY
 MARK PUBLIC WORKS ALUM. DISK DATE SET JUNE 5 19 98
 HORIZONTAL CONTROL ORIGINATED ON 2ND ST ORDER CONTROL BY _____
 ON 1927 DATUM ON 1983 (1990 GPS ADJUSTMENT) DATUM.
 COORDINATES (FT) ORDER COORDINATES (FT) ORDER
 NORTHING (Y) _____ NORTHING (X) 819679.40
 EASTING (X) _____ EASTING (X) 710628.91
 GRID FLORIDA TRANSVERSE MERCATOR RECOVERED BY _____
 ZONE WEST DATE CONDITION _____
 FIELD BOOK BWL #1 PAGE 44



JOHNSON ENGINEERING, INC.

CIVIL ENGINEERS - LAND SURVEYORS
 2158 JOHNSON STREET, POST OFFICE BOX 1550, FORT MYERS, FLORIDA, 33902-1550
 PHONE: 941-334-0046