

LEE COUNTY
SURVEY MARK DESCRIPTION.

DESIGNATION 2423 COUNTY LEE STATE FLORIDA
LOCATED IN SEC 20 TWP 45S RGE 24E USGS QUAD MAP FORT MYERS SW

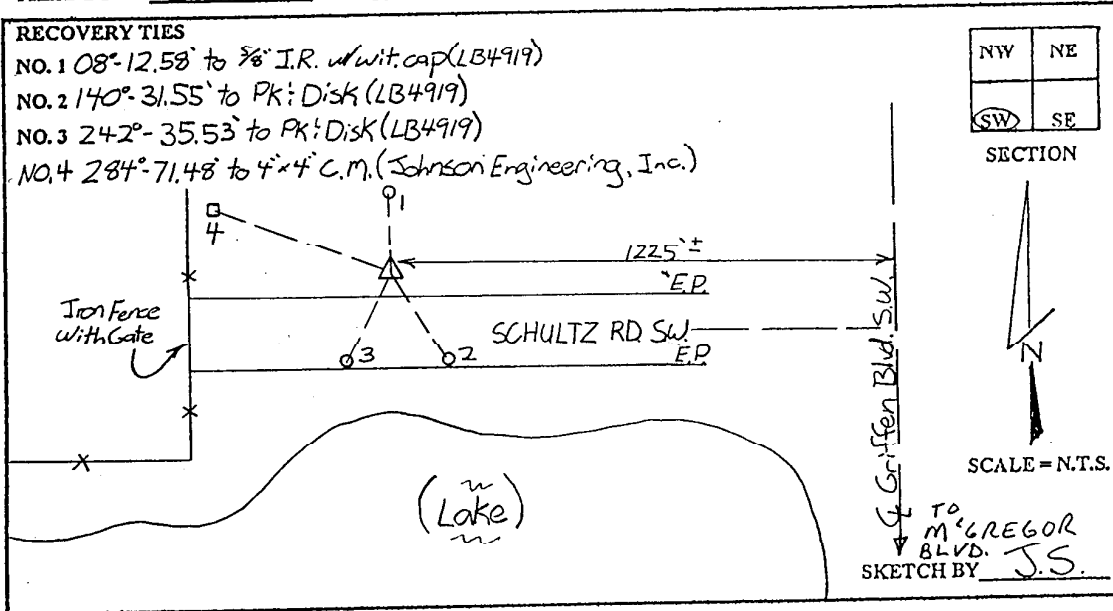
TO REACH SURVEY MARK:
FROM GLADIOLUS DR, RUN NORTH EASTERLY ON MCGREGOR BLVD 1 mi.± TO
GRIFFEN BLVD. S.W.; THENCE RUN NORTH ALONG GRIFFEN BLVD. 0.8 mi.±
TO SCHULTZ ROAD S.W.; THENCE RUN WEST ALONG SCHULTZ ROAD S.W.
0.25 mi.± TO MARK.

TYPE OF SET 6" ROUND CONCRETE MONUMENT W/ 3" LEE COUNTY
MARK PUBLIC WORKS DISK DATE SET JUNE 17 19 98

HORIZONTAL CONTROL ORIGINATED ON 2ND+ST ORDER CONTROL BY _____
ON 1927 DATUM. ON 1983 (1990 GPS ADJUSTMENT) DATUM.

COORDINATES (FT.) 2ND ORDER COORDINATES (FT.) 2ND ORDER
NORTHING (N) _____ NORTHING (N) 801301.16
EASTING (E) _____ EASTING (E) 677148.28

GRID FLORIDA TRANSVERSE MERCATOR RECOVERED BY _____
ZONE WEST DATE CONDITION _____
FIELD BOOK BWL#1 PAGE 47



JOHNSON ENGINEERING, INC.

CIVIL ENGINEERS - LAND SURVEYORS

2158 JOHNSON STREET, POST OFFICE BOX 1550, FORT MYERS, FLORIDA, 33902-1550

PHONE: 941-334-0046