

### LEE COUNTY SURVEY MARK DESCRIPTION

DESIGNATION 2002 COUNTY HENDRY STATE FLORIDA  
 LOCATED IN SEC 31 TWP 45.5 RGE 28E USGS QUAD MAP ALVA SE

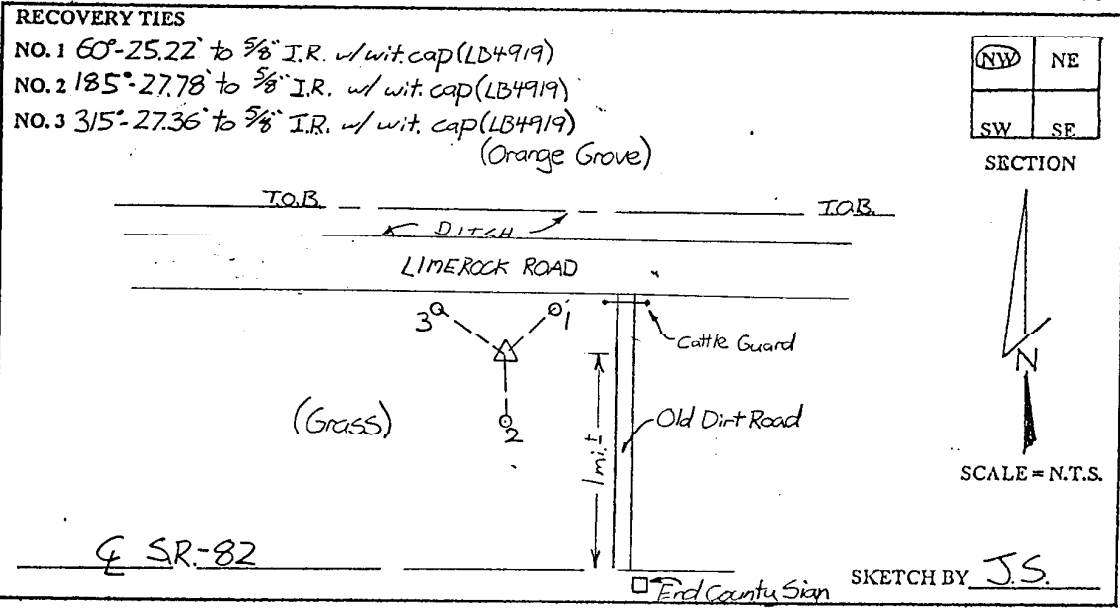
TO REACH SURVEY MARK:  
 FROM COLONIAL BLVD. EXTENSION; RUN SOUTH EASTERLY ALONG S.R.-82  
 1.6 mi. ± TO END COUNTY SIGN (LEE COUNTY); THENCE RUN NORTHERLY ALONG  
 AN OLD GRASS AND DIRT ROAD 1 mi. ± TO A LIMEROCK ROAD JUST SOUTH OF AN  
 ORANGE GROVE.

TYPE OF SET 6" ROUND CONCRETE MONUMENT W/ 3" LEE COUNTY  
 MARK PUBLIC WORKS DISK DATE SET JUNE 22 1998

HORIZONTAL CONTROL ORIGINATED ON 2ND-1ST ORDER CONTROL BY \_\_\_\_\_  
 ON 1927 DATUM. ON 1983 (1990 GPS ADJUSTMENT) DATUM.

COORDINATES (FT.) 2ND ORDER COORDINATES (FT.) 2ND ORDER  
 NORTHING (Y) \_\_\_\_\_ NORTHING (Y) 797779.77  
 EASTING (X) \_\_\_\_\_ EASTING (X) 800412.56

GRID FLORIDA TRANSVERSE MERCATOR RECOVERED BY \_\_\_\_\_  
 ZONE WEST DATE CONDITION \_\_\_\_\_  
 FIELD BOOK BWL #1 PAGE 13



**JOHNSON ENGINEERING, INC.**

CIVIL ENGINEERS - LAND SURVEYORS

2158 JOHNSON STREET, POST OFFICE BOX 1550, FORT MYERS, FLORIDA, 33902-1550

PHONE: 941-334-0046