

LEE COUNTY SURVEY MARK DESCRIPTION

DESIGNATION 2112 COUNTY LEE STATE FLORIDA
 LOCATED IN SEC 19 TWP 45S RGE 27E USGS QUAD MAP ALVA SW

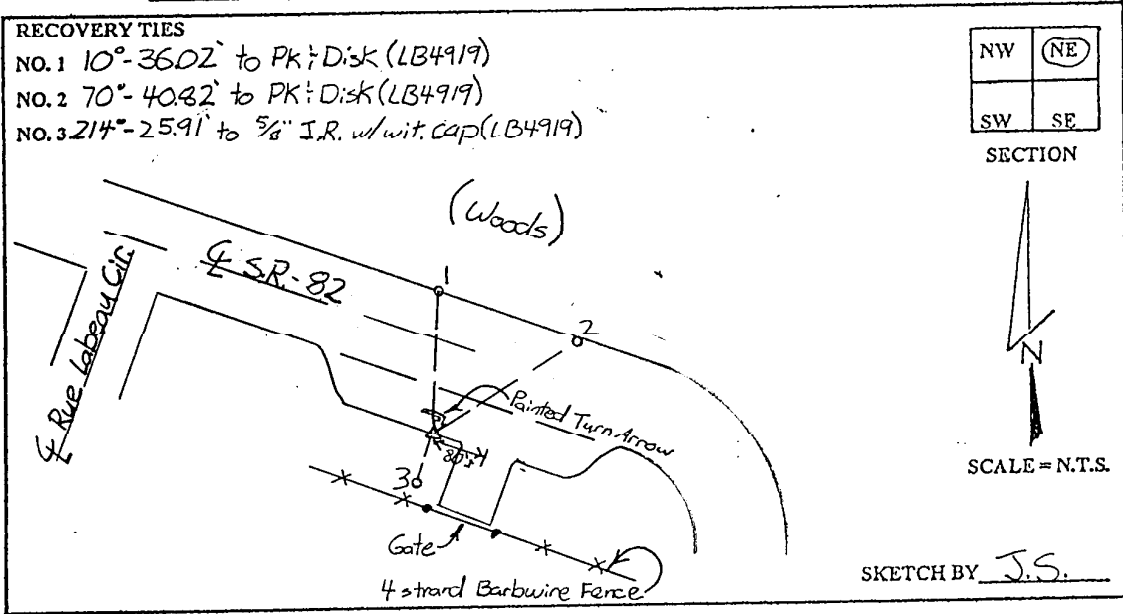
TO REACH SURVEY MARK:
 FROM ALABAMA ROAD; RUN SOUTH EASTERLY ALONG S.R.-82 0.68 mi. ±
 TO RUE LABEAU CIR.; THENCE CONTINUE RUNNING SOUTH EASTERLY ALONG
 S.R.-82 TO A TURN LANE LEADING TO A GATE ALONG A 4-STRAND BARBWIRE FENCE.
 MARK IS LOCATED ON TIP OF PAINTED TURN ARROW.

TYPE OF SET 3" LEE COUNTY PUBLIC WORKS ALUM. DISK IN ASPHALT
 MARK _____ DATE SET JUNE 22 1998

HORIZONTAL CONTROL ORIGINATED ON 2ND-1ST ORDER CONTROL BY _____
 ON _____ 1927 DATUM ON 1983 (1990 GPS ADJUSTMENT) DATUM.

COORDINATES (FT). 2ND ORDER COORDINATES (FT) 2ND ORDER
 NORTHING (Y) _____ NORTHING (X) 807140.43
 EASTING (X) _____ EASTING (X) 770722.72

GRID FLORIDA TRANSVERSE MERCATOR RECOVERED BY _____
 ZONE WEST DATE CONDITION _____
 FIELD BOOK BWL #4 PAGE 11



JOHNSON ENGINEERING, INC.

CIVIL ENGINEERS - LAND SURVEYORS

2158 JOHNSON STREET, POST OFFICE BOX 1550, FORT MYERS, FLORIDA, 33902-1550

PHONE: 941-334-0046