

LEE COUNTY SURVEY MARK DESCRIPTION

DESIGNATION 2286 COUNTY LEE STATE FLORIDA
LOCATED IN SEC 7 TWP 44S RGE 22E USGS QUAD MAP BOKEELIA

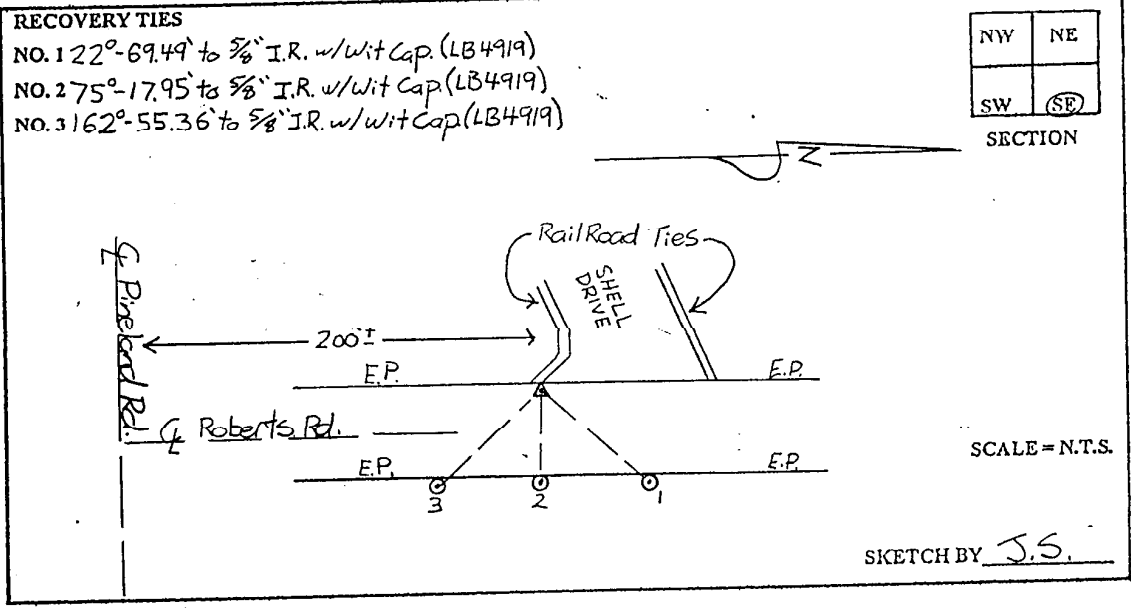
TO REACH SURVEY MARK:
FROM PINE ISLAND CENTER, RUN NORTH ON STRINGFELLOW ROAD 3.5 mi.±
TO PINELAND ROAD; THENCE RUN WEST ON PINELAND ROAD 0.75 mi.± TO
ROBERTS ROAD; THENCE RUN NORTH ON ROBERTS ROAD 200'± TO DISK "2286"

TYPE OF SET 3" LEE COUNTY PUBLIC WORKS ALUM. DISK
MARK IN PAVEMENT DATE SET APRIL 20 19 98

HORIZONTAL CONTROL ORIGINATED ON 2ND 1ST ORDER CONTROL BY _____
ON 1927 DATUM. ON 1983 (1990 GPS ADJUSTMENT) DATUM.

COORDINATES (FT). 3RD ORDER COORDINATES (FT) 2ND ORDER
NORTHING (Y) _____ NORTHING (Y) 844679.16
EASTING (X) _____ EASTING (X) 608879.20

GRID FLORIDA TRANSVERSE MERCATOR RECOVERED BY _____
ZONE WEST DATE CONDITION _____
FIELD BOOK BWL#2 PAGE 9



JOHNSON ENGINEERING, INC.

CIVIL ENGINEERS • LAND SURVEYORS

2158 JOHNSON STREET, POST OFFICE BOX 1550, FORT MYERS, FLORIDA, 33902-1550

PHONE: 941-334-0046