

LEE COUNTY SURVEY MARK DESCRIPTION

DESIGNATION 2333 COUNTY LEE STATE FLORIDA
 LOCATED IN SEC 21 TWP 45S RGE 25E USGS QUAD MAP FORT MYERS SE

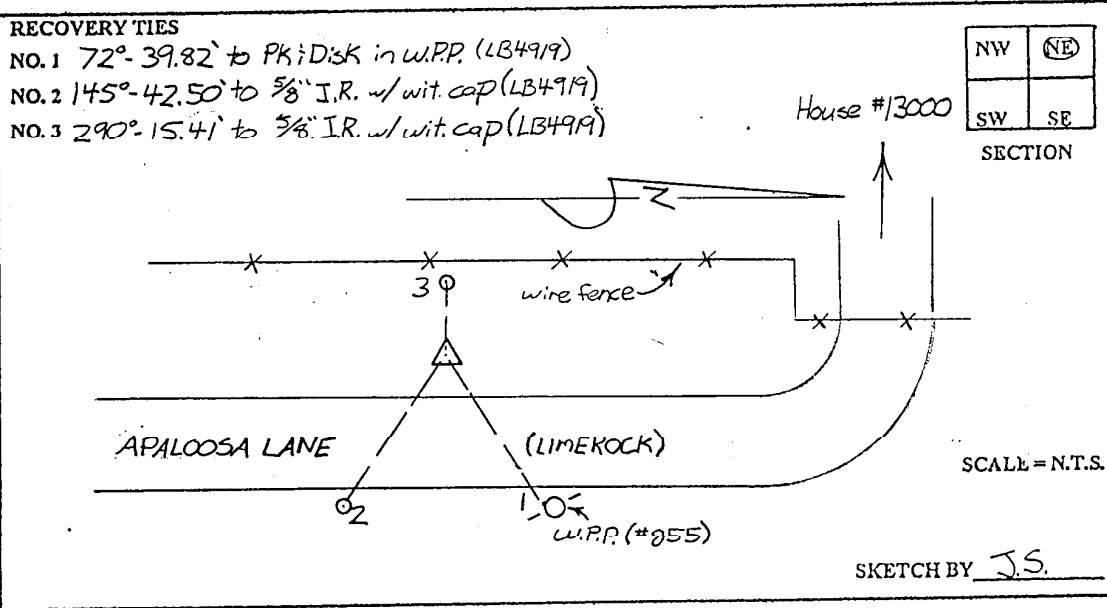
TO REACH SURVEY MARK: FROM THE INTERSECTION OF DANIELS PKWY AND SIX MILE CYPRESS PKWY; RUN EAST ALONG DANIELS PKWY 1.9 mi.± TO APALOOSA LANE; THENCE RUN NORTH ALONG APALOOSA LANE 0.4 mi.± TO MARK.

TYPE OF SET 6" ROUND CONCRETE MONUMENT W/ 3" LEE COUNTY MARK PUBLIC WORKS ALUM. DISK DATE SET JUNE 22 1998

HORIZONTAL CONTROL ORIGINATED ON 2ND, 1ST ORDER CONTROL BY _____
 ON 1927 DATUM. ON 1983 (1990 GPS ADJUSTMENT) DATUM.

COORDINATES (FT.) 2ND ORDER
 NORTHING (Y) _____ EASTING (X) _____
 NORTHING (Y) 807003.07 EASTING (X) 718775.30

GRID FLORIDA TRANSVERSE MERCATOR RECOVERED BY _____
 ZONE WEST DATE CONDITION _____
 FIELD BOOK BWL#1 PAGE 32



JOHNSON ENGINEERING, INC.

CIVIL ENGINEERS - LAND SURVEYORS

2158 JOHNSON STREET, POST OFFICE BOX 1550, FORT MYERS, FLORIDA, 33902-1550

PHONE: 941-334-0046