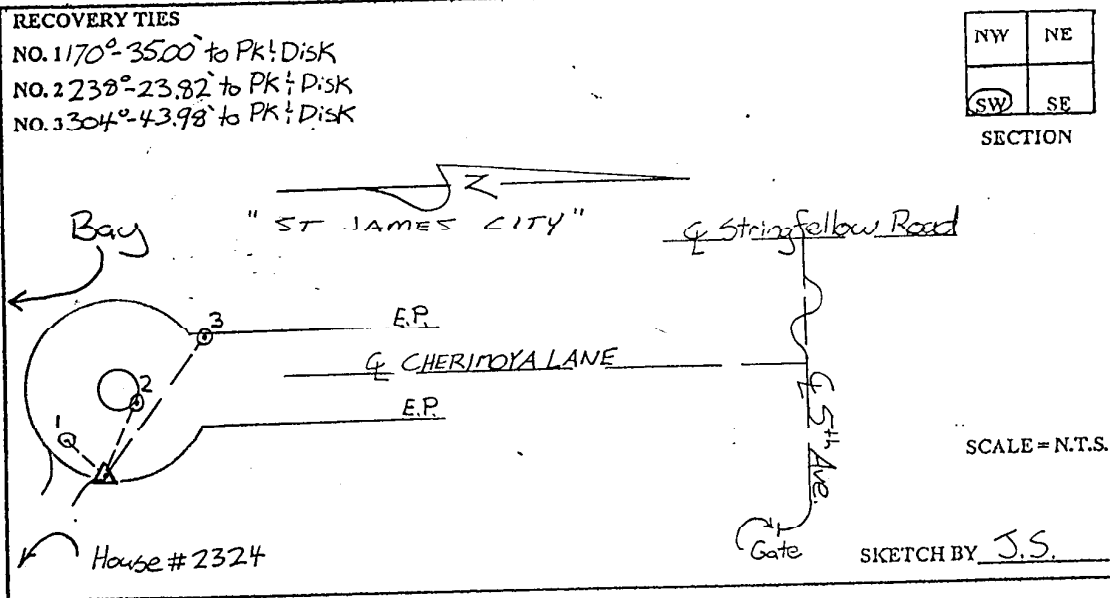


LEE COUNTY SURVEY MARK DESCRIPTION

DESIGNATION 312 COUNTY LEE STATE FLORIDA
 LOCATED IN SEC 1 TWP 46S RGE 22E USGS QUAD MAP SANIBEL

TO REACH SURVEY MARK:
 FROM PINE ISLAND CENTER; RUN SOUTH ON STRINGFELLOW ROAD 7.5 mi.±.
 TO 5th AVE, THENCE RUN EAST ALONG 5th AVE. TO CHERIMOYA LANE, THENCE
 RUN SOUTH ALONG CHERIMOYA LANE TO HOUSE #2324.

TYPE OF SET 3" LEE COUNTY PUBLIC WORKS ALUM. DISK AT CORNER
 MARK OF CONCRETE DRIVE AND E.O.P. DATE SET APRIL 24 19 98
 HORIZONTAL CONTROL ORIGINATED ON INDUST. ORDER CONTROL BY _____
 ON 1927 DATUM ON 1983 (1990 GPS ADJUSTMENT) DATUM.
 COORDINATES (FT.) ORDER COORDINATES (FT.) ORDER
 NORTHING (Y) _____ NORTHING (X) 785543.64
 EASTING (X) _____ EASTING (X) 632857.75
 GRID FLORIDA TRANSVERSE MERCATOR RECOVERED BY _____
 ZONE WEST DATE CONDITION _____
 FIELD BOOK BWL #2 PAGE 14



JOHNSON ENGINEERING, INC.

CIVIL ENGINEERS - LAND SURVEYORS

2158 JOHNSON STREET, POST OFFICE BOX 1550, FORT MYERS, FLORIDA, 33902-1550

PHONE: 941-334-0046