

LEE COUNTY SURVEY MARK DESCRIPTION

DESIGNATION 2103 COUNTY LEE STATE FLORIDA
 LOCATED IN SEC 8 TWP 45S RGE 27E USGS QUAD MAP ALVA SW

TO REACH SURVEY MARK:
 FROM SR-82; RUN NORTH EASTERLY ALONG ALABAMA ROAD 2.5 mi. ± TO MILWAUKEE BLVD; THENCE RUN SOUTH EASTERLY ALONG MILWAUKEE BLVD 0.4 mi. ± TO GRANT BLVD; THENCE RUN EAST ALONG GRANT BLVD 0.75 mi. ± TO RANIER ST; THENCE RUN NORTH ALONG RANIER ST 0.25 mi. ± TO READING ST AND MARK.

TYPE OF SET 6" ROUND CONCRETE MONUMENT W/ 3" LEE COUNTY

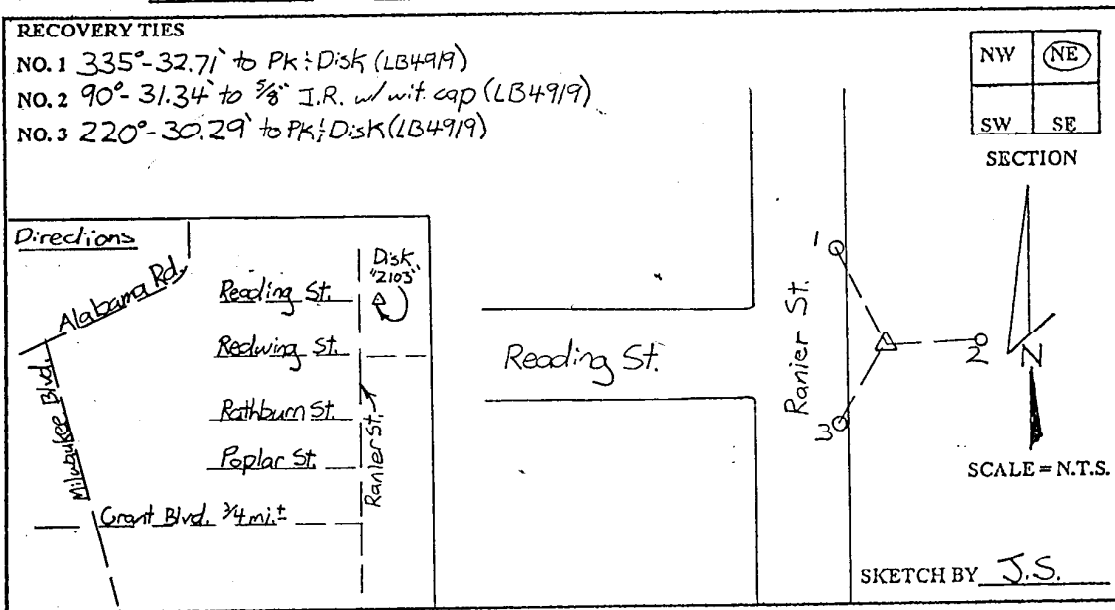
MARK PUBLIC WORKS ALUM. DISK DATE SET JUNE 19 1998

HORIZONTAL CONTROL ORIGINATED ON 2ND 1ST ORDER CONTROL BY _____
 ON 1927 DATUM ON 1983 (1990 GPS ADJUSTMENT) DATUM.

COORDINATES (FT.) 2ND ORDER COORDINATES (FT.) 2ND ORDER
 NORTHING (Y) _____ NORTHING (Y) 816317.01
 EASTING (X) _____ EASTING (X) 775733.17

GRID FLORIDA TRANSVERSE MERCATOR RECOVERED BY _____
 ZONE WEST DATE CONDITION _____

FIELD BOOK BWL #1 PAGE 16



JOHNSON ENGINEERING, INC.

CIVIL ENGINEERS - LAND SURVEYORS

2158 JOHNSON STREET, POST OFFICE BOX 1550, FORT MYERS, FLORIDA, 33902-1550

PHONE: 941-334-0046