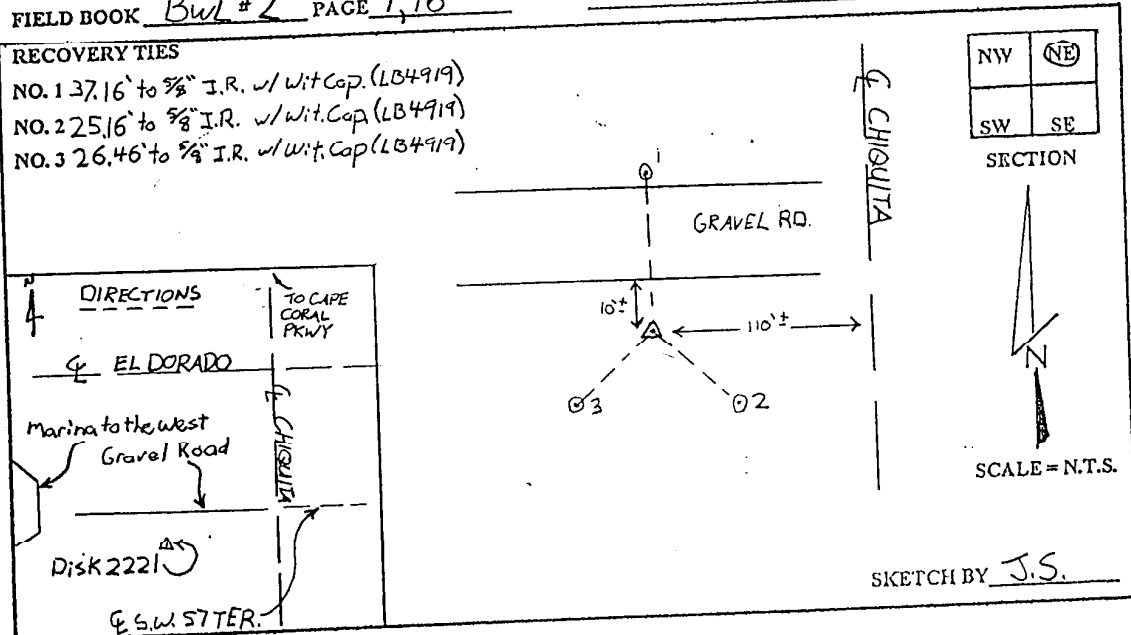


## LEE COUNTY SURVEY MARK DESCRIPTION

DESIGNATION 2221 COUNTY LEE STATE FLORIDA  
 LOCATED IN SEC 21 TWP 45S RGE 23E USGS QUAD MAP PINE ISLAND CENTER

TO REACH SURVEY MARK:  
 FROM CAPE CORAL PKWY.; RUN SOUTH ON CHIQUITA BLVD. 1 mi.± TO S.W. 57 TER.;  
 THENCE RUN WEST, OPPOSITE OF S.W. 57 TER. ALONG A GRAVEL ROAD 110'±  
 TO DISK "2221"

TYPE OF SET 6" ROUND CONCRETE MONUMENT w/ 3" LEE COUNTY  
 MARK PUBLIC WORKS ALUM. DISK DATE SET JUNE 16 19 98  
 HORIZONTAL CONTROL ORIGINATED ON 2ND 1ST ORDER CONTROL BY \_\_\_\_\_  
 ON 1927 DATUM. ON 1983 (1990 GPS ADJUSTMENT) DATUM.  
 COORDINATES (FT.) \_\_\_\_\_ ORDER \_\_\_\_\_  
 NORTHING (Y) 803988.50  
 EASTING (X) 653830.46  
 GRID FLORIDA TRANSVERSE MERCATOR RECOVERED BY \_\_\_\_\_  
 ZONE WEST DATE CONDITION \_\_\_\_\_  
 FIELD BOOK BWL #2 PAGE 1, 16



**JOHNSON ENGINEERING, INC.**

CIVIL ENGINEERS - LAND SURVEYORS

2158 JOHNSON STREET, POST OFFICE BOX 1550, FORT MYERS, FLORIDA, 33902-1550

PHONE: 941-334-0046