

LEE COUNTY SURVEY MARK DESCRIPTION

DESIGNATION 2280 COUNTY LEE STATE FLORIDA
 LOCATED IN SEC 10 TWP 45S RGE 22E USGS QUAD MAP PINE ISLAND CENTER

TO REACH SURVEY MARK:
 FROM PINE ISLAND CENTER; RUN SOUTH ALONG STRINGFELLOW ROAD
 3.75 mi. ± TO SUBSTATION; THENCE RUN EAST ALONG ACCESS ROAD
 TO DISK "2280" LOCATED JUST EAST OF STRINGFELLOW ROAD E.O.P.

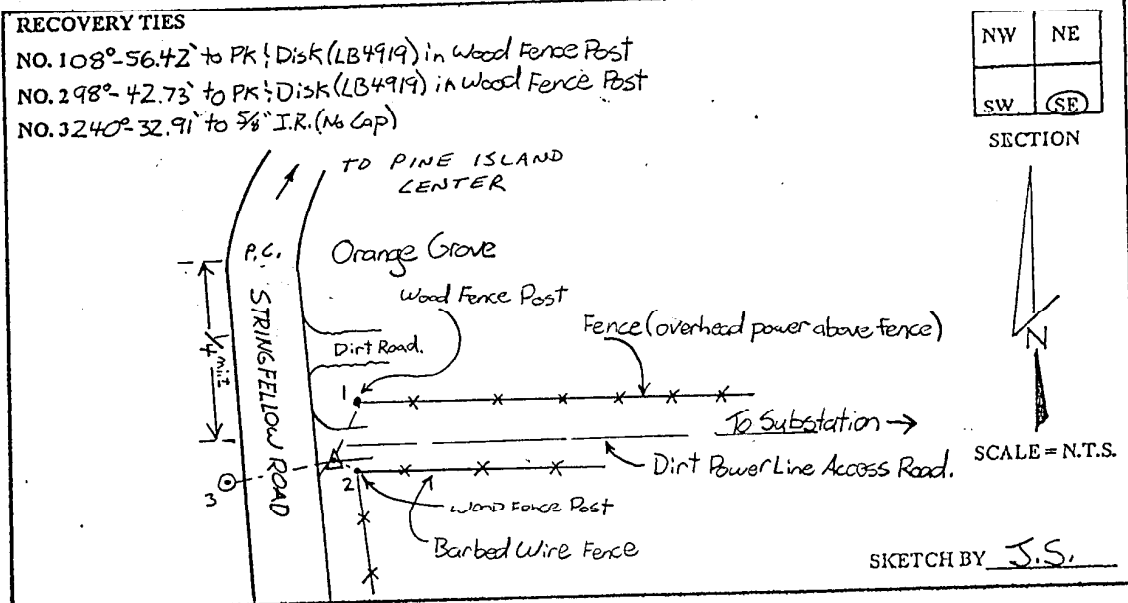
TYPE OF SET 3" LEE COUNTY PUBLIC WORKS ALUM. DISK IN PAVEMENT
 MARK _____ DATE SET APRIL 24 19 98

HORIZONTAL CONTROL ORIGINATED ON 2ND 1ST ORDER CONTROL BY _____
 ON _____ 1927 DATUM. ON 1983 (1990 GPS ADJUSTMENT) DATUM.

COORDINATES (FT.) _____ ORDER _____ COORDINATES (FT.) _____ ORDER _____
 NORTHING (Y) _____ NORTHING (Y) 810219.47
 EASTING (X) _____ EASTING (X) 624087.47

GRID FLORIDA TRANSVERSE MERCATOR RECOVERED BY _____
 ZONE WEST DATE CONDITION _____

FIELD BOOK BWL #2 PAGE 13



JOHNSON ENGINEERING, INC.

CIVIL ENGINEERS - LAND SURVEYORS
 2158 JOHNSON STREET, POST OFFICE BOX 1550, FORT MYERS, FLORIDA, 33902-1550
 PHONE: 941-334-0046